



**JEWISH  
FAMILY  
&CHILD**

EVERY STEP OF THE WAY.

# EMERGING ISSUES IN PALLIATIVE CARE – A COMMUNITY VIEW

---

LISA KRONENBERG MSW, RSW

COORDINATOR, JEWISH HOSPICE PROGRAM

# The Jewish Hospice Program (JHP)

---

## WHO WE ARE ...

Dedicated program within Toronto's Jewish Family and Child agency

Established in 1993 with the aim to provide home-centered hospice services to individuals with life threatening illness

Available at no fee to anyone who identifies as Jewish within the Greater Toronto Area

Staffed by Social Workers, Rabbi and Volunteers (via partnership with Circle of Care)

## WHAT WE DO ...

Provide counselling, care planning, resource identification, advocacy, chaplaincy and volunteer support to clients and their families.

Client centered; services provided are tailored to meet individual needs.

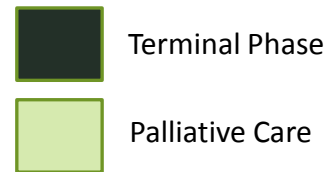
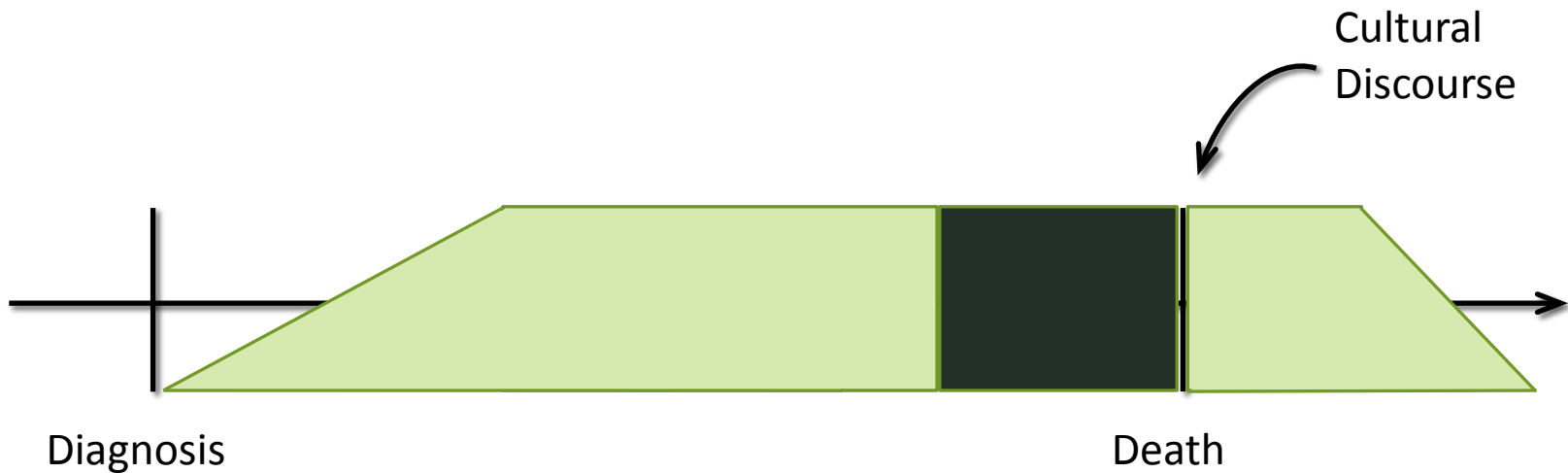
Collaborate with medical and community healthcare teams to develop integrated care planning.

Counselling support for caregivers, caregiver relief

Bereavement support in individual and group formats

# Spectrum of Care

---



# What is Palliative Care?

---

“Palliative care is an approach that improves the quality of life of patients and their families facing the problem associated with life-threatening illness, through the prevention and relief of suffering by means of early identification and impeccable assessment and treatment of pain and other problems, physical, psychosocial and spiritual.”

WORLD HEALTH ORGANIZATION

[HTTP://WWW.WHO.INT/CANCER/PALLIATIVE/DEFINITION/EN/](http://www.who.int/cancer/palliative/definition/en/)

# Community Palliative Care - Issues

---

1. Access to Services

2. Disjointed Delivery

3. Support After Death

# 1. Access to Services

---

- Services not being offered until client is actively dying
- People know they need help, but have no idea where to reach out for help

# 1. Access to Services

---

JF&CS

Institutions

Rabbi

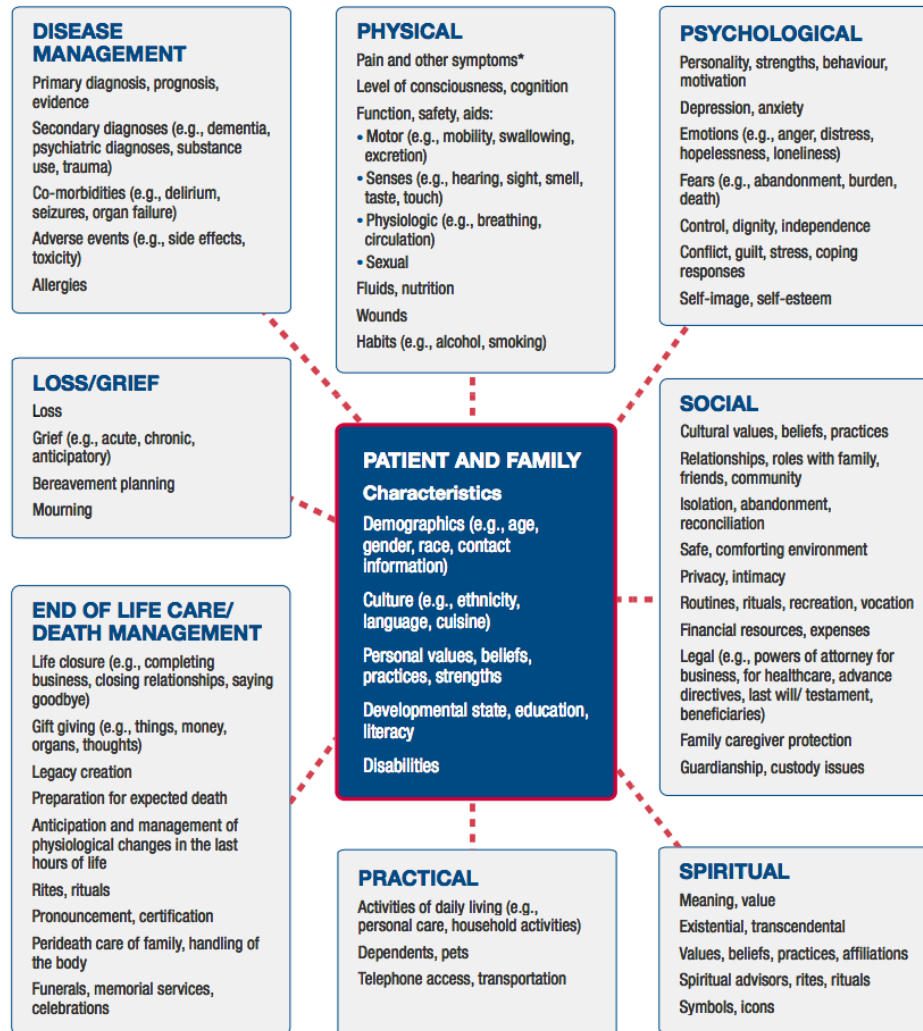


Programs

Day School

Synagogue

# 2. Disjointed Delivery



CANADIAN HOSPICE PALLIATIVE CARE ASSOCIATION. A MODEL TO GUIDE HOSPICE PALLIATIVE CARE. OTTAWA, ON: CANADIAN HOSPICE PALLIATIVE CARE ASSOCIATION, 2013.



# 3. Support After Death

---

## ILLNESS

- Caregiver Assessment
- Respite
- Counselling
- Anticipatory Grief
- Red Flags

## BEREAVEMENT

- Cultural Knowledge
- Clinical, Individual, Groups
- Complicated Grief

# The Human Factor

---

I always like to look on the optimistic side of life, but I am realistic enough to know that life is a complex matter.

*WALT DISNEY*