



**Jewish
Philanthropies**
of SOUTHERN ARIZONA



2022
Community Report

**TODAY.
TOMORROW.
ALWAYS.**



**“Learn from yesterday,
live for today, hope
for tomorrow.”**
-Albert Einstein

Message from **Emily Richman**

Interim CEO

Today. Tomorrow. Always.

We are pleased to share this Community Report with you, highlighting the powerful ways that Jewish Philanthropies of Southern Arizona (JPSA) made a difference at home and abroad this past year. We hope you will learn more about the projects and initiatives that matter most to you while being inspired by new reasons to support the valuable work we do.

What is JPSA?

Comprised of the **Federation** and **Jewish Community Foundation**, JPSA supports and sustains our entire community. We are here for you – our valued donors and fundholders, organizations, agencies, non-profits, and synagogues. JPSA is about outreach, Jewish continuity, Jewish community security, and addressing the areas our community recognizes as high priorities such as Jewish engagement, Jewish education, caring for others, and tikkun olam (repairing the world).



Emily Richman,
Interim CEO

JPSA supports and sustains our *entire* community... we are about outreach, Jewish continuity, Jewish community security, and addressing the areas our community recognizes as high priorities.

The Federation Impact

Your unrestricted gifts to our Annual Campaign fund our five beneficiary agencies and programs such as the Jewish Community Relations Council (JCRC), the Weintraub Israel Center, and PJ Library. We are incredibly proud of these partnerships that ensure vibrant Jewish life, support the most vulnerable among us, and uplift our entire community.

With your support, we also respond to critical, emergent needs. Nearly \$300,000 has been raised to support the resettlement of refugees coming to and through Tucson, and almost \$500,000 has been contributed to support our brothers and sisters in Ukraine.

Jewish Community Foundation Impact

JCF continues its trusted, donor-centered planning with individuals, families, and organizations to bring philanthropic visions to life. Our Foundation professionals partner with you to explore ways to support the causes and organizations you care about, remember those you love, and give back in the ways that matter most to you.

Through the generosity and foresight of our fundholders, the Foundation distributes over \$12 million to more than 500 organizations annually. The impact is truly immeasurable.

In all these ways and more, we make a difference in Southern Arizona and around the world. **On behalf of Jewish Philanthropies of Southern Arizona, I thank you for your ongoing support that makes this all possible.**

Warmly,

A handwritten signature in blue ink that reads "Emily Richman".

Emily Richman, Interim CEO

The Federation

JPSA is at the center of Jewish life in Southern Arizona.

We join with local organizations, synagogues and our five beneficiary agencies to build, strengthen, and sustain our community. With our **community-wide lens**, we are uniquely situated to identify gaps and occasional overlaps, address needs, and direct resources where they are most needed.

JPSA's Beneficiary Agencies

Jewish Family and Children's Services

JFCS provides counseling and essential community services to serve the needs of vulnerable individuals and families across Southern Arizona.



Tucson Hebrew Academy

THA provides an exemplary secular and pluralistic Jewish education for students in kindergarten through 8th grade in a nurturing, supportive environment steeped in Jewish values.

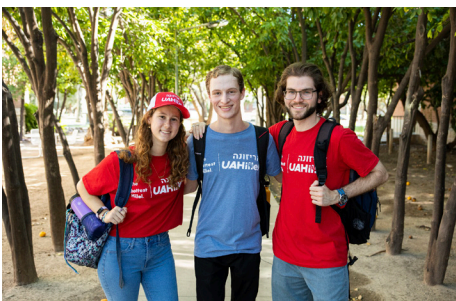


Tucson Jewish Community Center

For over 60 years, the Tucson J has welcomed all ages, abilities, faiths, and identities who come to grow, play, exercise, learn, and relax.

Tucson Jewish Museum & Holocaust Center

Located in Barrio Viejo, an historic neighborhood in downtown Tucson, the museum features the first synagogue built in the Arizona Territory (1910) and an award-winning Holocaust History Center.



University of Arizona Hillel Foundation

The UA Hillel is a place where undergraduate and graduate students explore their Jewish identity, build leadership skills, socialize, and engage in Jewish life.

The Federation

JPSA is here for you.

JPSA works with the entire Jewish community regardless of observance level, identity, or affiliation. Our donors are also our recipients - benefiting from the wide range of services, programs, and projects we fund.



JPSA ensures our Jewish future.

Through our training, programming, and leadership opportunities, like the Tobin Board Leadership Program, PJ Library, and Momentum Year-Long Journey, JPSA inspires the next generation of Jewish leaders and philanthropists. We invest in community infrastructure, sustaining our longstanding Jewish institutions, allocating grants to local organizations, and offering opportunities for our community members to celebrate Jewish values, engage with Israel, care for others, and make our world a better place.

JPSA provides community security.

JPSA prioritizes the urgent need for a comprehensive and centralized approach to safety and security in the greater Tucson Jewish community by funding our Jewish Community Security Program. Our Community Security Directors serve Jewish Tucson by conducting security assessments, providing security trainings, assisting with securing federal non-profit security grants, addressing security needs, concerns, and emergencies, and coordinating with law enforcement agencies – all at no additional cost to our community.



JPSA makes a difference through the generosity of valued donors, like you.

Through our fundraising efforts, JPSA is able to address critical needs in Southern Arizona and around the world. Each gift to JPSA's Annual Campaign provides essential funding to dozens of local Jewish organizations and programs which, in turn, offer a continuum of services, support, and opportunities to engage and make change.

A single gift to JPSA makes a direct and powerful impact.

The Federation



Love your neighbor as yourself.

- Leviticus 19:18

Ukraine Relief

Leveraging the strength of the Federation network, JPSA was part of the **organized and urgent international effort to raise funds for Ukraine relief**. We quickly responded to the pressing need by providing **nearly \$500,000 in essential funds** to our partner agencies on the ground for food, security, welfare services, and temporary housing in Ukraine and other countries who welcomed Ukrainians fleeing their homeland, including Israel.

Refugee Resettlement

Funding from JPSA supports the refugee resettlement program in Southern Arizona. Hundreds of refugees from around the world resettle in or pass through Pima county each year. They are generously welcomed to our community with meals, housing, healthcare, clothing, and essential services. In 2022, **donors doubled their impact** through a generous dollar-for-dollar matching gift from an anonymous donor, which resulted in our ability to provide nearly \$300,000 in services.

77

Homer Davis Students

JPSA volunteers pack and provide **weekly food packages to 77 Homer Davis Elementary School students** who might otherwise go hungry. Daily snacks are also provided for kindergarten and 1st grade students.

40,732

 meals

40,732 meals were donated in 2022 for Project Isaiah, JPSA's annual High Holiday food drive benefiting the Community Food Bank of Southern Arizona – an increase of 60% from 2021.

1,000+

 rides

Seniors remained healthy, active, and engaged **with transportation assistance funded by JPSA totaling more than 1,000 one-way rides** in 2022. More than 70 riders used transportation services to access medical services, Jewish activities, grocery stores, and social service appointments.

590

 Wildcats

590 Wildcats were engaged in programs, activities, and services at UA Hillel – more than a 100% increase from 2021 thanks to strategic planning and investment by JPSA and Hillel International.



The Federation

"Do not separate yourself from the community."
- Hillel, Avot 2:4

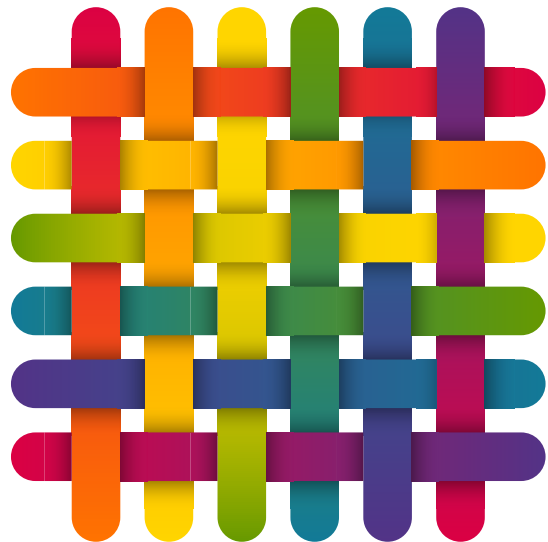
JPSA is community-focused.

JPSA guides and funds the Jewish Ecosystem of Southern Arizona – encouraging community collaboration and strategic planning to ensure our shared Jewish future.

What is the Jewish Ecosystem?

The Ecosystem is comprised of our synagogues, organizations, and agencies working together as an interconnected web to identify and address community-wide priorities. Professional staff and volunteers serve on the Ecosystem leadership team and workgroups focused on the areas of Jewish education, Jewish engagement, caring for others, and tikkun olam (repairing the world). Through idea and resource sharing, the Ecosystem strengthens our community so we continue to grow and thrive.

The Ecosystem belongs to and is comprised of our entire Jewish community.



Jewish Ecosystem
of SOUTHERN ARIZONA



כל יחיד צריך ליחס את עצמו לכל הציבור, כי אם אין כל הציבור, אין כל יחיד

*Every individual must relate to the whole community,
for without the whole community there is no individual.*

2022 Federation Allocations

46%

Community Impact and Engagement

- **Ecosystem** – Community collaboration to advance, build, and strengthen our local Jewish community.
- **Homer Davis Project** – Supporting the underserved families at Homer Davis Elementary School.
- **Jewish Emergency Financial Assistance (JEFA)** – Caring for the neediest Jewish families in our community throughout the year.
- **Jewish Community Relations Council (JCRC)**
- **Microgrant Funding** – Supporting Jewish engagement, community programming and collaboration.
- **PJ Library**
- **Tobin Board Leadership Program** – Training future board members and Jewish community leaders.
- **Weintraub Israel Center**
- **And many more...**

31%

Beneficiary Agencies

- **Jewish Family & Childrens' Services (JFCS)**
- **Tucson Hebrew Academy (THA)**
- **Tucson Jewish Community Center**
- **Tucson Jewish Museum & Holocaust Center**
- **University of Arizona Hillel Foundation**

21%

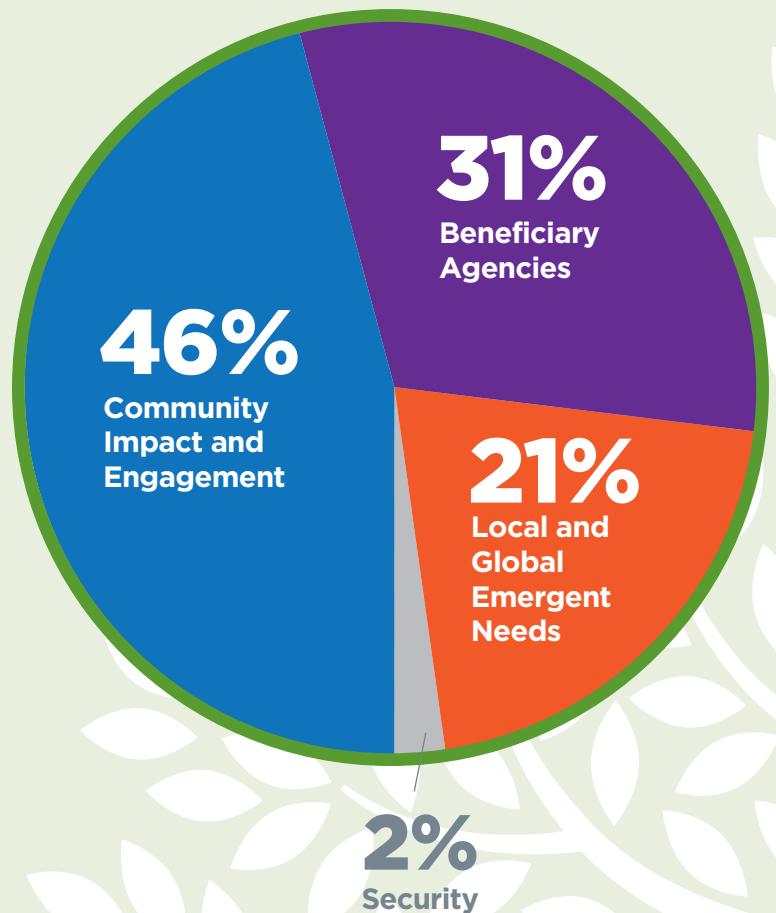
Local and Global Emergent Needs

- **Ukraine Relief**
- **Refugee Resettlement Relief**
- **Joint Distribution Committee (JDC) Hunger Relief**

2%

Security

- **Jewish Community Security Program** – Providing security services, training, and assessment for the entire Jewish community.



Jewish Community Foundation

JCF partners with you to achieve your charitable vision.

Our donor-focused team of professionals is honored to work with individuals and families from diverse backgrounds, supporting each of you on your journey to become more strategic and impactful in your personal philanthropic endeavors. We provide a personalized approach and a variety of options for charitable and planned giving. As your trusted partner, JCF provides expert guidance, education, reporting and fund management.

Types of Funds

Donor Advised Fund (DAF): Give for Today

A DAF allows you to direct charitable contributions through one philanthropic fund to support the causes that matter most to you in the Jewish and broader communities.

For many of our Foundation fund holders, leaving their legacy includes inspiring future generations to carry on the tradition of giving. By sharing the gift of philanthropy, they pass on their deeply held beliefs along with the Jewish values of *tzedakah* (righteous giving) and *tikkun olam* (repairing the world). One local *bubbe* (grandmother) did just that by creating an Endowment through JCF to fund Donor Advised Funds (DAFs) for each of her grandchildren.



"There is going to come a time when I am no longer here. When that time comes, I still hope to be a part of your lives through the kindness you show, the generosity you share and the caring that you give to your family, your community and the world around you. To support that, I have created a fund which will allow you to give to causes and charities. This is not to replace your own contributions but to continue the tradition and expectation that is part of our family and part of our heritage...being Jewish has always been the foundation of our identity and extremely important to us. Consequently, as we addressed the causes we cared most about, we did so through the Jewish community and in connection to our Jewish values.

It is my hope that by creating a fund for each of you, you will continue to grow our family's tradition of tzedakah and of tikkun olam. This means not only the honor of giving back through the charitable funds you inherit, it also means embracing the responsibility of apportioning a percentage of the money you earn throughout your life to the efforts and causes that will improve your world and the world that you leave to the next generation....I am so proud of each of you. - Much love always, Bubbe"

The Foundation

Types of Funds

Endowment Funds: Give for the Future

Endowment Funds are designed to provide ongoing support for the organizations or causes you care about either into perpetuity or for a period of time. There are a multitude of reasons people establish endowments and there are endless causes in need of support.

The **Sid & Naomi Islin Endowment Fund** provides religious Jewish education for youth from families unable to afford it.

"Be a Jew. Don't forget who we are, where we came from, our history, and our religion."



"Through our legacy plan, JPSA can perpetuate the Jewish Community from generation to generation, with continued engagement from childhood to adulthood. I am a firm believer in our mission and sustaining our ability to support Jewish Philanthropies. Having our children attached, perpetuates the memory of us in the community." – **Andy and Linda Kunsberg**

As a medical doctor, Dr. Craig Watson was very invested in the parent-child relationship and in people having control and autonomy over their own bodies. **The Dr. Craig W. Watson Endowment** honors his legacy to ensure these issues are addressed in perpetuity.

The **Jeffrey B. Harvey Endowment Fund** was created to support disadvantaged youth through Youth On Their Own.

"Jeff was a sensitive and caring person, who, in the last chapter of his life, obtained necessary credentials to provide both mental health and substance abuse counseling services. He successfully established and maintained a behavioral health practice and enjoyed working with others. The endowment is his way to continue to help youth overcome their own challenges and maintain a normal standard of living." – **Jeff's brothers**



The Gift of Giving

By Elise Hirshberg

To each of my very special grandchildren, After Grandpa died, I created an Endowment Fund at the Jewish Community Foundation hoping to be able to make meaningful contributions to the causes I care most about. Some are charities that Grandpa supported, like the Southern Poverty Law Center and the Weizmann Institute, but most of them are causes that mean a great deal to me.

I care deeply about feeding those who are hungry, fighting racism and bigotry. And promoting equality and justice. I also prioritize Jewish charities as being Jewish is very important to me.

It is my hope that by creating individual funds for each of you, you will have a chance to understand and learn about what it means to give something back to the world. The choice of giving is totally yours as there are hundreds of charities, non-profits and agencies to choose from. It is important to me that by giving back, you will be engaging in an essential aspect of Jewish living by doing what is called Tikkun Olam or repairing the world.

I love you all, so, so much,

Grandma



Elise Hirshberg with her granddaughter, Lauren Lederman

JCF works with attorneys, financial planners, accountants, and other professional advisors to bring your philanthropic vision to life. This collaboration prioritizes your passion, dreams, and legacy and empowers you to invest in stronger communities for tomorrow.

JCF partners with non-profits to elevate and expand their impact. JCF helps steward the endowment and custodial funds of more than 30 local non-profit organizations – enabling charitable assets to grow to meet current and future needs.



Foundation Financials

The future of our Jewish community is being created through the thoughtful planning of visionary donors today.

\$12.1 Million

in grants and distributions (2022)

More than \$12.1 million in grants and distributions were made through donor advised funds, individual endowment funds, and organization funds.

500+

Nonprofits helped (2022)

More than 500 nonprofits in our community and around the world received support from the generosity of our fund holders.

\$154.1 Million

in total assets

Value of all assets held by the Jewish Community Foundation in funds.

\$22 Million

In new contributions (2022)

Donors and organizations entrusted the Foundation with more than \$22 million in new contributions.



PRIME MINISTER'S COUNCIL (\$100,000+)

Anonymous (1)
Alice and Paul Baker Donor Advised Fund[^]
The Estate of Joan and Donald Diamond
The Maizlish Family
 Dr. Leslie and Dr. Richard Glaze
 Jody and Stewart Gross
 Erinn and Scott Maizlish
 *Phyllis Maizlish
 Shelly and Steve Silverman
*Evelyn and *Shaol Pozez Endowment Fund
Zuckerman Family Foundation - Enid and *Melvin Zuckerman

PRESIDENT'S CIRCLE (\$50,000-\$99,999)

Jane and Bruce Ash
Carol and Lex Sears

KING DAVID SOCIETY (\$25,000 - \$49,999)

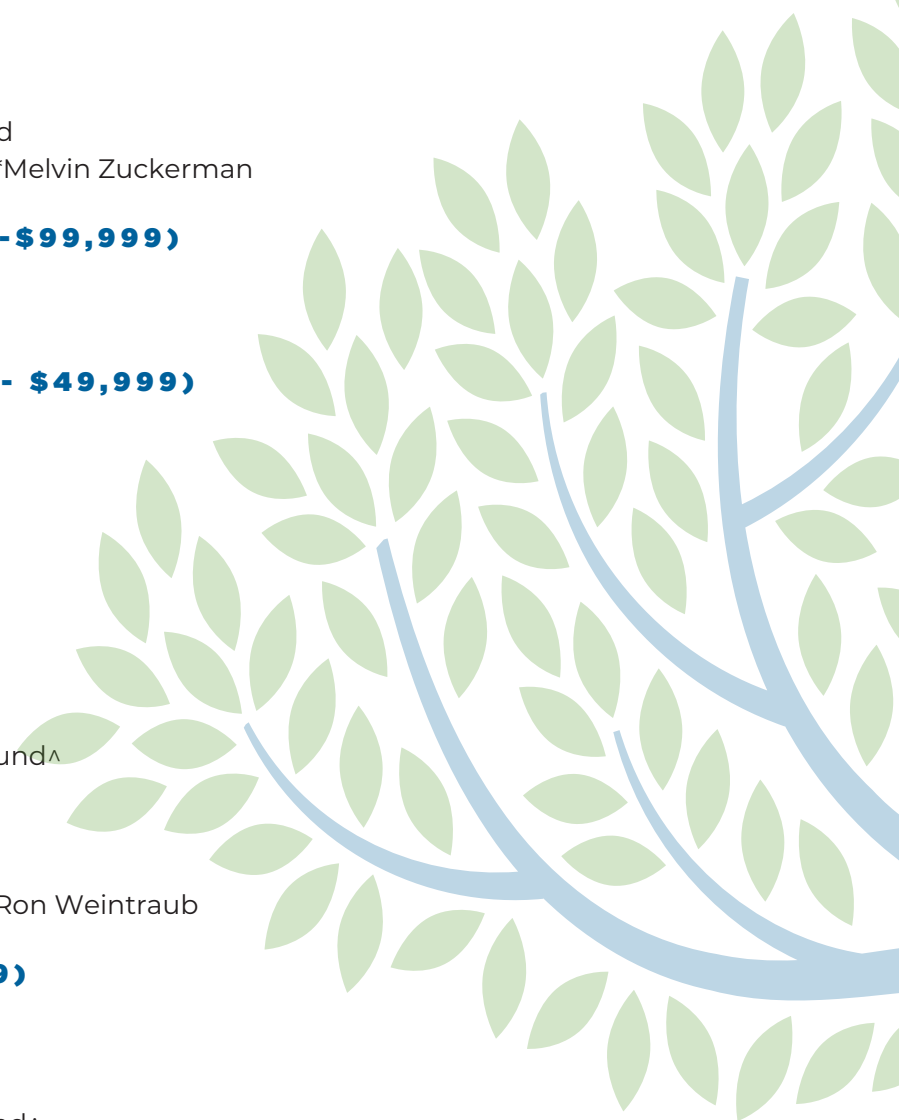
Anonymous (1)
Anne and David Hameroff
Beth and Mike Kasser
Tandy and Gary Kippur
*Rabbi Lee Kivel and Jane Kivel
Janet and Barry Lang
Helaine Levy
Kathy and Dr. Ron Margolis
Donna and Hans Moser
Robin and Mitchell Pozez Donor Advised Fund[^]
Shelley Jo Pozez
Rachel and Stephen Sattinger
Donald Sloane
Weintraub Israel Center Fund - Diane and Ron Weintraub

LEAD GIFTS (\$18,000 - \$24,999)

Anonymous (1)
Mara and Keith Aspinall
Rose Bitterman Campaign Fund
Minnette Marks Friedman Endowment Fund[^]
Ellen and David Goldstein
Ann Lovell and Thomas Warne
Deborah Oseran and Bobby Present
Shelly and Steve Silverman

[^]Housed at the Jewish Community Foundation of Southern Arizona
⁺Ben Gurion Society
^{*}Of blessed memory

List includes pledges received as of December 31, 2022.
We apologize for any omissions or errors.



JOSHUA SOCIETY (\$10,000 - \$17,999)

Anonymous (1)
 Barry Baker
 Sherry and *Richard Belkin
 Audrey Brooks and Dick Lauwasser
 Gail and *Dr. Alan Cohn
 Marilyn Einstein and Steve Sim Donor Advised Fund[^]
 Deanna Evenchik-Brav
 Laurie and Robert Glaser
 Elsa and Jay Goldberg
 Sheryl and Robert Greenberg
 Jody and Stewart Gross
 Denise Grusin and James Wezelman
 Lisa Lovallo and Terri Kessler
 Michael MacElhenny
 Shirley and Stanley Matlick
 Vicki and Phillip Pepper
 *Dr. Jill and Dr. Herschel Rosenzweig
 *Irene Sarver
 Alexis and Jeremy Sharpe+
 Josh Silverman
 Kathryn and David Unger

ADVANCED GIFTS (\$5,000 - \$9,999)

Anonymous (1)
 Rabbi Stephanie and Dr. Jack Aaron
 Edith Arnstein Charitable Trust[^]
 Sarah and Jeff Artzi
 Deborah Baker
 Beren Family Endowment Fund[^]
 Judy Berman
 Sally and Neal Cash
 Amy Charles and Steven McMillan
 Joan and Jack Cole
 Harry Ettinger Campaign Fund[^]
 Karen and Dr. Lionel Faitelson
 Phyllis Fist
 Erica and Dr. Arthur Friedman
 Madeline and Dr. Barry Friedman
 Dr. Janis Wolfe Gasch and Danny Gasch
 Jane Gellman
 Ellyn and Jeff Gold
 Toni and Dr. Mark Goldberg
 Melissa and Dr. Tedd Goldfinger
 Dana and Adam Goldstein+
 Paulette and Joe Gootter

Fay Green
 Brina Grusin
 Leslie Koretz Heros
 Graham Hoffman
 Eleanor and Dr. Donald Jeck
 Liz Kanter Groskind and Eric Groskind
 Andra Karnofsky and Dr. Chuck Gannon
 Fran and Jeff Katz
 Karen and Dr. Jeffrey Katz
 Dr. Marta and Dr. Steven Ketchel
 Linda and Andrew Kunsberg
 Michelle and Dr. Barry Kusman
 Bertie Levkowitz
 Yoram Levy
 Lauren Mathon
 Helene and Michael Miron
 Dr. Michael and Nancy Morrell
 Caren and Dr. Tom Newman
 Kathy Orr and Peter Evans
 Karen and Eric Peters
 Amy and Ben Pozez+
 Leo Rich Campaign Fund
 Morris Rosenbaum Campaign Fund
 Sarah and Dr. Leonard Schultz
 Ronnie E. Sebold
 Kris and Ben Silverman
 David Silvern
 Rica Spivack
 Monique Steinberg
 Lee Surwit
 Marsha and Gary Tankenoff
 Dr. Donald and Elissa Tempkin
 Robyn Kessler and Jeff Timan
 Sarah Ullman
 Brenda and Bill Viner
 Martin Waldbaum
 Susan and Les Wallach
 Deborah and *Craig Watson
 Elizabeth Weiner-Schulman
 Jana and Frank Westerbeke
 Dr. Ilona Wolfman and Matthew Rothman+
 Ruth Zales
 Alan Ziblat

[^]Housed at the Jewish Community Foundation of Southern Arizona
⁺Ben Gurion Society
 *Of blessed memory

List includes pledges received as of December 31, 2022.
 We apologize for any omissions or errors.

CHAI (\$1,800 - \$4,999)

Anonymous (1)
Morgan Abraham+
Joanne and Howard Adams
Sandi and Dr. Lawrence Adler
Carolee and Prof. Daniel Asia
Jenny and Dr. Hillel Baldwin
Bernard Berkowitz Campaign Fund
Dr. Carol and Dr. Harris Bernstein
Harold and Alma Bongarten
Endowment Fund^
Sandy Capin-Kauffman and
Richard Kauffman
Susan Chaikin and Stanley Lehman
Marjorie and George Cunningham
Judith Bronstein and Goggy Davidowitz
Ruth and *Stephen Dickstein
Eleanor Eigen
Rosie Eilat-Kahn and Paul Kahn
Dr. Julie Feldman and Dr. Keith Dveirin
Fern Feder Lion of Judah
Endowment Fund^
Janet Fireman
Dr. Ellis Friedman and Irene Stern Friedman
Douglas and Elizabeth Rollings Friman
Scott Gan
Kathy Gerst and Dr. Brian Hunter+
Dr. Gerald and Barbara Goldberg
Arthur Goldman Campaign Fund^
Rachael Goldwyn and Dr. Alan Levenson
Judith and Dr. Harvey Goodman
Debbie Goodman-Butler and Pat Butler
Joanne and Dr. Gary Gottlieb
Morris Grossman UJA Endowment Fund^
Diana and Dr. Lawrence Haas
Sandy and Dr. Elliott Heiman
Shari and Daniel Hofstadter
Mitch and Susan Jacobson
Leonard and Marcelle Joffe
Robin Sue and Michael Kaiserman
*Barbara and Sidmond Kaplan
Susan and Jon Kasle
Holly and Barry Kitay
Elaine and Neil Kleinman
Carol Koretz

Brenna Lacey and Stephen Rodgveller
Anne and Gerald Lapin
Janice and Dr. Robert Leff
Randi and Michael Levin
Sherry and Alan Levin
Carol and Dr. Norman Levine
Elaine Litvack
Marcia and Rabbi Thomas Louchheim
Luana Fay Ash Forever Lion
Endowment Fund^
Cyd and Peter Marcus
Maurice and Gail Mordka
Endowment Fund^
Rhea and Dr. Arnold Merin
Claudine and Andrew Messing
Beverly and Dr. Bernard Miller
Martha Moses
Essie Nadler
Jean and Jordan Nerenberg
Elise and Rick Oestreich
Carol and Frank Pilmar
Eve and Stuart Pinkert
Nancy and Allan Resnick
Helen Rib
Jenni and Todd Rockoff
Desi Rosenfield and Dr. Jerry Winter
Nan Rosenthal Campaign Fund^
Helene and Dr. Barney Rothstein
Anna and Myron Rottenstein
Bill and Martha Sampson Family Fund
Dr. Andrea and Dr. Eric Schindler
Robyn and Dr. Edward Schwager
Janet and Dr. Stephen Seltzer
Esther Sherberg Term Endowment Fund^
Jim Shiner
Melissa Spiller and Michael Shiner+
Keri and Jeff Silvyn+
Alice and Dr. Joel Steinfeld
Stanley Tanz Campaign Fund
Marianne and Stuart Taussig
Dr. Amy Tempkin and Dr. David Sheinbein
Merle Turchik
Samuel Webert
Nancy and Dr. Rick Weiss
Barbara Harris and Richard White

Keren and Jeffrey Winkelman+
Dr. Mary Cochran Wolk and
Dr. Robert Wolk
Becky and Dr. Al Zehngut
Zehngut Family LOJ Endowment Fund^

^Housed at the Jewish Community Foundation of Southern Arizona
+Ben Gurion Society
*Of blessed memory

List includes pledges received as of December 31, 2022.
We apologize for any omissions or errors.

FEDERATION DONOR LISTINGS: \$1,000 (\$500 FOR INDIVIDUALS) TO \$1,799

TIKKUN (\$500 (single) \$1,000 - \$1,799)

Dr. Mireille Algazi
 Anonymous (2)
 Dr. Sharon Arkin
 Pat Ballard
 Myles Beck and Iris Posin
 Dr. Pat and Dr. Gary Becker
 Patti Behr and Donn Alpert
 Dr. Sandy Stein-Belkoff and
 Dr. Kenneth Belkoff
 Dr. Eric Berens
 Carol and Harold Blatter
 *Suzanne and Dr. Nathaniel Bloomfield
 Esther Blumenfeld
 Erin and Jeffrey Bridge
 Susan and Steve Bush
 Robert Chapman
 Betty and A. Jay Citrin
 David Cohen
 Linda and Lawrence Cohen
 Marsha Cohen
 Noah Cohen
 Kenneth Cohn
 Lee and Andrew Comrie
 Arlene and Barry Corey
 Roberta and Dr. Roger Davis
 Dr. LeeAat Dehnert and Dr. John Dehnert+
 Dvora Tager and Robert Dietz
 Donald Eastman Campaign Fund^
 Kimberly L. Driskell
 Edwina Schoenhof Campaign Fund^
 Rosalind and Seth Eisner
 Elinor and Yale Palchick Family Foundation
 Esther N. Capin Women's Philanthropy
 Endowment^
 L. Elliott Farber
 Cynthia and Daniel Feig
 Peggy and Bob Feinman
 Wendy and Richard Feldman
 Judy and Jay Feldstein
 Randy and Steve Fenton
 Simone and Isaac Figueroa
 Wendy and Dr. William Fishkind
 Sorale and *Marvin Fortman
 Marlyne Freedman
 Lisa Ungar and Dr. Robert Fridrich
 Jami Gan
 Deborah and Edward Gentile
 George & Bea Martin Fund^
 Gertrude Hornstein Campaign Fund^
 Elaine and Dr. Stanley Goldberg
 Ann Goldberg
 Gloria and Dr. Mike Goldman

Amy and Mo Goldman+
 Phyllis Goodman
 Audrey and Michael Green
 Lynda and Mark Hanna
 Barbara Heft
 Amy Hirshberg Lederman
 Carol Hollander
 Kyra and Barney Holtzman
 Simone Hyams
 Simone and Harold Hyams
 Kathleen and Dr. Jonathan Insel
 Sheri and John Karobonik
 Iris Bernstein and Dave Karp
 Joan and Dr. Jay Katz
 Lauri Marks-Kaye and Dr. Larry Kaye
 Judi Kessler
 Lewis and Irene Klar
 Jan and Rick Kleiner
 Dr. Nancy Koff
 Billie and Dr. Boris Kozolchyk
 Heidi and Paul Kraft
 Kolin and Lori Ann Kramme
 Terri and Scott Krasner
 Amy Krauss and
 Honorable Richard Gordon
 Dorothy Kret and Mike Lex
 Norma Lackow
 Norma and Abe Lackow
 Bert Landau
 Myra Levenson
 Ellen Levey and Larry Selig
 Carole Levi
 Dr. Lori Levine and Gary Benna
 Barbara and Dr. Martin Levy
 Ken Light
 Gloria Linden
 Liselotte Rosenheimer Campaign Fund^
 Marilyn Lobell
 Lesley Lurie
 Honey and Dr. Murray Manson
 Marian Gallin Campaign Fund^
 Nancy and Stuart Mellan
 Elyce and Mark Metzner
 Meyer Agron Family Endowment Fund^
 Jennifer Miller Grant
 Michelle and Joseph Millstone
 Minnie Kramer Campaign Fund^
 Dr. Raymond Moldow
 Morgan Family Foundation
 Geraldine Moyer
 Eric Natter

Terry and Jerry Neuman
 Miriam Nickerson
 Barry Kirschner and Leslie Nixon
 Eileen Palles
 Lucy and Jonathan Penner
 Dr. Jacob Pinnas
 Lynn Ratener
 Jill and Jim Rich
 Richard & Elsie Eisner Campaign Fund^
 Richard Reiss Campaign Fund^
 Rob and Emily Richman
 *Shirley and Bart Rochman
 Fay Roos
 Joan and Myron Rosenbluth
 Sara Ross
 Sandy and Dr. Jim Rothschild
 Tanya Miller and Isaac Rothschild+
 Jenny and Nathan Rothschild+
 Laura and Dr. Paul Sagerman+
 Cindy Schiesel
 Suzanne and Lewis Schorr
 Gordon Schultz
 Dr. Gail Schwartz
 Susan Seidler
 Seth and Rosalind Eisner Fund^
 Dr. Rena Shifren and Dr. Nolan Shifren+
 Carole and Dr. Sylvain Sidi
 Linda and Shelby Silverman
 Lindley and Jay Silverman
 Marilyn and Alan Speert
 Karen Spiegel and Jonathan Rothschild
 Terri and Jeffrey Spoon
 Sue and Bob Strauss
 Janin Struminger
 Judy and Arnold Task
 Lenny Teiber
 Cheryl and Dr. Howard Toff
 Natasha and Dr. Joshua Tofield
 Abigail and Dr. Noah Tolby+
 Anne Waisman and William Hausman
 Joan Weinman
 Janice Wezelman and David Bartlett
 William Kerman Campaign Fund^
 Dr. Angela Wolfman

^Housed at the Jewish Community Foundation of Southern Arizona

+Ben Gurion Society

*Of blessed memory

List includes pledges received as of December 31, 2022.
 We apologize for any omissions or errors.

WOMEN'S PHILANTHROPY LION OF JUDAH

INTERNATIONAL LEADERSHIP REUNION LION OF JUDAH

Anonymous (1)
Alice Baker

PRIME MINISTER'S COUNCIL LION OF JUDAH

Enid Zuckerman

ZAHAV LION OF JUDAH

Jane Ash
Carol Sears

EMERALD LION OF JUDAH

Anonymous (1)
Leslie Glaze
Anne Hameroff
Beth Kasser
Tandy Kippur
Jane Kivel
Janet Lang
Helaine Levy
Kathy Margolis
Donna Moser
Robin Pozez
Shelley Jo Pozez
Rachel Sattinger
Diane Weintraub

SAPPHIRE LION OF JUDAH

Mara Aspinall
Ellen Goldstein
Ann Lovell
Deborah Oseran
Shelly Silverman

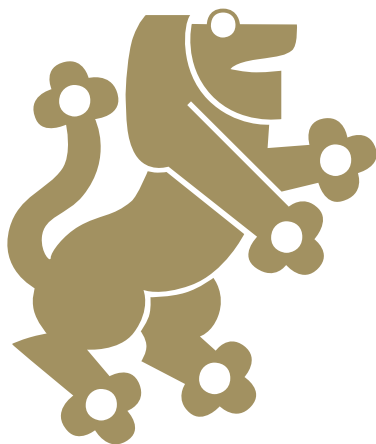
RUBY LION OF JUDAH

Kelley Abrahams
Sherry Belkin
Audrey Brooks
Gail Cohn
Marilyn Einstein
Deanna Evenchik-Brav
Laurie K. Glaser
Elsa Goldberg
Joan Auerbach Green
Sheryl Greenberg
Jody Gross
Denise Grusin
Terri Kessler
Lisa Lovallo
Shirley Matlick
Vicki Pepper
Alexis Sharpe
Roselyn Silverman
Kathryn L. Unger

LION OF JUDAH

Stephanie Aaron
Sarah Artzi
Deborah Baker
Judy Berman
Sally Cash
Amy Charles
Joan Cole
Toni Esquibel
Karen Faitelson
Phyllis Fist
Madeline Friedman
Erica Friedman
Janis W. Gasch
Jane Gellman
Ellyn Gold
Melissa Goldfinger
Dana Goldstein
Fay Green

Liz Kanter Groskind
Brina Grusin
Leslie Koretz Heros
Eleanor Jeck
Andra Karnofsky
Fran L. Katz
Karen Katz
Robyn Kessler
Marta Ketchel
Raquel Klein
Linda Kunsberg
Bertie Levkowitz
Marcia Louchheim
Lauren Mathon
Helene L. Miron
Nancy Morrell
Caren Newman
Kathy Orr
Karen Peters
Amy Pozez
Anna Rottenstein
Sarah Schultz
Ronnie E. Sebold
Kris Silverman
Rica Spivack
Monique Steinberg
Lee Surwit
Marsha Tankenoff
Elissa Tempkin
Merle Turchik
Brenda Viner
Susan Wallach
Deborah Watson
Elizabeth Weiner-Schulman
Jana Westerbeke
Ilona Wolfman
Ruth A. Zales



FEDERATION LEGACY SOCIETY

Jewish tradition teaches that one of our cherished responsibilities is to make the world a better place for future generations. The Federation's Legacy Society and Legacy Circle were created to recognize those who plan to provide support in perpetuity for the local, national, and global work of the Federation. Through the Legacy Society, we have the opportunity to build a vibrant Jewish community forever. We are deeply grateful for the community members listed below whose generosity will spread light to future generations and whose names will be honored in perpetuity.

Sarah and Jeff Artzi

Jane and Bruce Ash

Myles Beck and Iris Posin

Sherry and Richard Belkin

Robert Beren

Tamar and J. Louis Bergantino

Judy Berman

Donna and Bruce Beyer

Suzanne and Nathaniel Bloomfield

Daniella and Philip Bregman

Audrey Brooks

Heather and Stephen Caine

Jennifer and Mark Cassius

Roselyn Callahan and Ellen Freeman

Keith Chiodo and Steve Zupcic

Robert Cohen

Stephen Dickstein

Harry Ettinger

Deanna Evenchik-Brav

Ed Feder

Marlyne Freedman

Madeline and Barry Friedman

Janis Wolfe Gasch and Danny Gasch

Marion Gendell

Leslie Glaze

Melissa and Tedd Goldfinger

Dana and Adam Goldstein

Ellen and David Goldstein

Rebecca and Ted Goodman

Angie and Scott Goorman

Jennifer Miller Grant

Randy Greenberg

Liz Kanter Groskind and Eric Groskind

Jody M. Gross

Brina Grusin

Barbara Holtzman

Marcelle and Leonard Joffe

Carol Karsch

Fran and Jeff Katz

Karen and Jeffrey Katz

Aurora and Eugene Kellogg

Jane Kivel

Nancy Koff

Harriet and Len Kronman

Gail Kushner

Brenna Lacey and Stephen Rodgveller

Janet Osburn Lang and Barry Lang

Amy Lederman

Stanley Lehman

Carole Levi

Bertie Levkowitz

Nanci and Doug Levy

Elaine Litvack

Marcia and Rabbi Thomas Louchheim

Anne and David Lowe

Fern and Cary Marmis

Nancy and Stuart Mellan

Donna and Hans Moser

Caren and Tom Newman

Deborah Oseran and Bobby Present

Martha and Terry Perl

Robin and Mitchell Pozez

Shelley Jo Pozez

Jane Rodda and James Whitehill

Tracy Salkowitz

Bill Sampson

Thomas Sayler-Brown

Liz Weiner Schulman

Ronnie Sebold

Janet and Stephen Seltzer

Andy and Stuart Shatken

Shelly Silverman

Irene Steindler

Linda and Gerry Tumarkin

Kathryn and David Unger

Diane and Ronald Weintraub

James Wiseman and Lilah Morris-Wiseman

Ruth Zales

Enid and Melvin Zuckerman

WE REMEMBER THEM OF BLESSED MEMORY

Meyer Agron

Aaron Alexander

Edith Arnstein

Luana Fay Ash

Don Baker

Frances and Moe Beren

Bernard Berkowitz

Rose Bitterman

Alma and Harold Bongarten

Esther Capin

Robin and Arthur Cohen

Ruth Cohen

Shifrette Cohen

Joan and Donald Diamond

Donald Eastman

Elsie and Richard Eisner

Harry Ettinger

Harvey Evenchik

Fern Feder

Harold Finkelstein

Cappy and Sam Gallant

Marian Gallin

Gerry Gendell

Arthur Goldman

Gordan Goodman

Kenneth Greenfield

Morris Grossman

Gertrude Hornstein

Daniel Karsch

William Kerman

Steve Kippur

Rabbi Lee Kivel

Minnie Kramer

Ray Lederman

Jack Levkowitz

Julius Litvack

Phyllis Maizlish

Beatrice and George Martin

Gail and Maurice Mordka

Elinor and Yale Palchik

Evelyn and Shaol Pozez

Louis Pozez

Ruthann Pozez

Richard Reiss

Sol D. Resnick

Leo Rich

Martha Rich

Marian Roland

Gertrude and Fred Rosen

Morris Rosenbaum

Liselotte Rosenheimer

Nan Rosenthal

Martha Sampson

Irene Sarver

Dorothy and Julian Sayre

Edwina Schoenhof

Steve Schulman

Francine and Morton Shafon

Esther Sherberg

Jack Steindler

Stanley Tanz

Saul and Sue Tobin

Sylvia and Samuel Zaidenberg

Bryna Zehngut

Names in bold are members of The Legacy Circle, which recognizes those Legacy Society members who have committed to leave a legacy at the level of \$100,000 or more to perpetuate their Annual Campaign gift.

Names in italics have established a Lion of Judah Endowment at the level of \$100,000 or more to perpetuate their Lion of Judah Annual Campaign gift.

Endowment Funds: Building for Generations

The vision and foresight of our fund holders created the endowment funds below. These endowments are funded and making annual distributions to benefit our fund holders' most valued charitable organizations and causes.

A & A Endowment Fund

Meyer **Agron** Family Endowment Fund

B. I. **Amster** Memorial Scholarship Fund

Jerome & Frances **Amster** Philanthropic Fund

Martin S. & Bette R. **Amster** Endowment Fund

Luana Fay **Ash** Forever Lion Endowment

Baker CAI Matching Endowment Fund

David and Bryna **Ben-Asher** Endowment Fund

Beren Family Endowment Fund

Beren JCF Endowment Fund

Moe and Francis **Beren** Family Scholarship Fund

Beyer Family Endowment Fund

Holocaust Never Forget Fund In Memory of Szaja **Blajwas**, A Survivor

Rachel **Bloomfield** Remembrance Fund

Harold and Alma **Bongarten** Endowment Fund

Ida & J. Patricia **Brodsky** Memorial Endowment

Ida & J. Patricia **Brodsky** Memorial Foundation Endowment Fund

Benjamin and Elizabeth **Brook** Endowment Fund

Elizabeth and Benjamin **Brook** Early Childhood Scholarship Fund

Esther N. **Capin** University of Arizona Hillel Foundation Endowment

Esther N. **Capin** Women's Philanthropy Endowment

Richard L. **Capin** Memorial Fund

Marian **Cerf** Fund for Endowment of CJA

Marian **Cerf** Holocaust Learning Fund (TJCC)

Tom and Helen **Chandler** Scholarship Fund for Youth On Their Own Students

Noah Warren **Cohen** Fund

Congregation Anshei Israel Educational Programs Endowment

Shirley D. **Curson** Endowment for the Southern Arizona AIDS Foundation

Shirley D. **Curson** Scholarship Endowment for the Tucson Hebrew Academy

Shirley D. **Curson** Hillel Dinner Fund

Ray **Davies** Educational Outreach Endowment for the Holocaust History Center

Samuel & Belle **Deutsch** Endowment Fund

Dr. Bernard & Rebecca E. **Dickstein** Fund

Dr. Stephen **Dickstein** Scholarship Fund

Richard **Drake** Memorial Fund

Erenberg Synagogue Maintenance Fund

Erenberg Torah Fund

Deanna **Evenchik-Brav** Forever Lion Endowment

Fern **Feder** Lion of Judah Endowment Fund

Fischman Memorial Endowment Fund

Barry and Madeline **Friedman** Family Endowment Fund

Bruce and Minnette **Friedman** Endowment Fund

Minnette Marks **Friedman** Endowment Fund

Fred B. **Fruchthendler** Endowment Fund

Fruchthendler Endowment for JCC Teen Leadership Programs

Jacques & Linda **Gabbai** Brandeis Collegiate Institute Scholarship Endowment

Marion B. & Gerald S. **Gendell** Endowment for Jewish Education

Marion & Gerald **Gendell** Holocaust Remembrance Fund

Dr. Israel & Eleanor **Gerberg** Endowment

Leslie **Glaze** Lion of Judah Endowment Fund

Marsha **Goldberg** Endowment Fund

Ann and Sam **Goldfein** Endowment Fund

Dr. Sam **Goldfein** Memorial Fund

Elliot S. **Goldman** Israel Scholarship Fund

Goldman Family Israel Scholarship Fund

Jody **Gross** Lion of Judah Endowment Fund

Jack and Nadine **Grossi** Endowment Fund

Morris **Grossman** UJA Endowment Fund

Glenn **Grusin** Endowment Fund

Leslie & Brina **Grusin** Congregation Anshei Israel Endowment Fund

Leslie and Brina **Grusin** Endowment Fund

Marilyn **Haas** Community Youth Fund

Jeffrey B. **Harvey** Endowment Fund

Hazan Family Endowment Fund

James A. **Heuser** and Carol **Mintz-Heuser** Endowment Fund

Barry **Hirsch** Endowment for Congregation Anshei Israel

William F. **Holmes** Endowment Fund

Frances **Holt** Endowment Fund

Holtzman Family Campaign Fund

Sid & Naomi **Islin** Endowment Fund

Morton **Javer** Endowment Fund

Jewish Family & Children's Services Endowment in Memory of Jill **Rosenzweig**

Sidney and Tauba **Kaderlan** Endowment Fund

Paula and Harry G. **Karchmer** Endowment Fund

Daniel and Carol **Karsch** Family Foundation

Karen **Katz** Lion of Judah Endowment

Aurora and Eugene **Kellogg** Endowment Fund

Helen **Kolkey** Endowment Fund for the Arizona School for the Deaf and the Blind

Patricia and Peter **Kollar** Endowment Fund

Alma and Ed **Lakin** Education Endowment Fund

Burt and Brenda **Lazar** Endowment Fund
Stanley **Lehman** Endowment Fund
Dr. Jack & Bertie **Levkowitz** THA Endowment Fund
Phyllis **Maizlish** Lion of Judah Endowment Fund
Leslie **Mann** Revocable Trust
Gerda & Werner **Marcus** Endowment
Marmis Humanitarian Award
George & Bea **Martin** Fund
Deborah **Mayaan** Israel Festival Fund
Message of Hope Endowment Fund
George and Roslyn **Miller** Family Fund
Harry and Rita **Miller** Family Endowment Fund
Maurice and Gail **Mordka** Endowment Fund
Deanna J. **Myerson** Endowment Fund
Joseph & Jean **Myerson** Family Endowment Fund
Caren **Newman** Lion of Judah Endowment
Elinor and Yale **Palchick** Family Foundation
PJ Library Endowment Fund
Aaron & Helen Vogel **Polinsky** Endowment
Louis and Ruthann **Pozez** Endowment Fund
Shaol & Evelyn **Pozez** Endowment Fund
Martha **Rich** NCJW Loan Chest Endowment
Dr. Herschel and Jill **Rosenzweig** Term Endowment to Benefit The Drawing Studio
Jill and Herschel **Rosenzweig** Family Endowment
Jill **Rosenzweig** Lion of Judah Term Endowment Fund
Thomas & Ronald **Rubin** Memorial Fund for Temple Emanu-El
William & Doris **Rubin** Endowment Fund
William & Doris **Rubin** Endowment Fund for JCF
William & Doris **Rubin** Endowment for JFCS
William & Doris **Rubin** Endowment for Temple Emanu-El
Susann R. **Salmon** Memorial Fund
Bill and Martha **Sampson** Family Fund
Irene **Sarver** Memorial Fund
Julian & Dorothy **Sayre** Endowment Fund
Sarah and Leonard **Schultz** Endowment Fund
Howard J. and Gertrude H. **Schwartz** Endowment Fund
Shanhouse Endowment Fund for TJCC
Esther **Sherberg** Term Endowment Fund
Alexander and Rosalyn **Silverman** Family Endowment
Shelly **Silverman** Lion of Judah Endowment Fund
Small Family Endowment Fund for Youth On Their Own
Joyce & Jim **Stuehringer** and Herman & Pauline **Percher** Endowment
Ruth **Swedarsky** & Lila **Deon** Endowment Fund
Tischler-Evans Horse Rescue Endowment
Tischler-Evans Humane Society Endowment

Tobin Fund for Jewish Continuity
Susan and Saul **Tobin** Endowment Fund
Susan and Saul **Tobin** JCF Wing Endowment Fund
Tucson Hebrew Academy Teacher Excellence Fund
Florence & William **Waldman** Endowment
Albert & Sara **Wallach** Endowment Fund
Dr. Craig W. **Watson** Endowment
Weiner and **Schulman** Family Endowment for Temple Emanu-El
Joan Felicia **Weinman** Legacy Endowment Fund
Ruth and Jack **Weinstein** Endowment Fund
Weintraub Israel Center Fund
Diane **Weintraub** Lion of Judah Endowment Fund
Celia and Sherman L. **Weitzmon** Scholarship Endowment
Norman and Mary **Wezelman** Endowment for Academic Success
James **Wiseman** and Lilah **Morris-Wiseman** Endowment Fund
Dr. Samuel & Sylvia **Zaidenberg** Endowment Fund
Bryna **Zehngut** Family Endowment Fund
Bryna **Zehngut** Lion of Judah Endowment
Bryna **Zehngut** Mitzvah Award Fund
Marianne **Zimmt** Memorial Endowment
Zuckerman Family Fund

Testamentary Endowment Funds: Legacy Planning for the Future

The funds listed below will be funded from the donor's estate or other provisions after their lifetime. Their thoughtful planning today will help create a more sustainable future for the nonprofits and causes they care about.

Ira and Dana **Adler** Endowment Fund
 Elke **Armoni** Fund
 Jeffrey R. and Sarah T. **Artzi** Endowment Fund
 Bruce and Jane **Ash** Endowment Fund
 Jane **Ash** Lion of Judah Endowment Fund
 Paul and Bridget **Ash** Endowment Fund
 Eliot and Vida **Barron** Term Endowment Fund
 Myles K. **Beck** Endowment Fund
Belkin Family Endowment Fund
 Sherry B. and Richard B. **Belkin** Endowment Fund
 Sherry **Belkin** Lion of Judah Endowment Fund
 Frances and Moe **Beren** Term Endowment
Bergantino Family Fund
 Judy **Berman** Lion of Judah Endowment Fund
 Bruce and Donna **Beyer** Fund
 Emma Lee **Black** Endowment Fund
 Herman K. **Bleibtreu** Endowment Fund
 Nathaniel and Suzanne **Bloomfield** Endowment Fund
 Nathaniel and Suzanne **Bloomfield** Term Endowment Fund
 Michelle **Blumenberg** Endowment Fund
Bregman Family Foundation Fund
Briefer Family Endowment Fund
Bronstein and **Davidowitz** Family Fund
 Audrey Y. **Brooks** Endowment Fund
 Dave and Jan **Burris** Charitable Fund
 Steve and Susie **Bush** Endowment Fund
 Heather and Stephen **Caine** Family Endowment Fund
 Neal **Cash** and Sally **Grant** Endowment Fund
 Jennifer and Mark **Cassius** Endowment Fund
 Ellen **Cohen** Memorial Endowment Fund
 Ruth F. & Samuel H. **Cohen** Rabbinic Chair at Temple Emanu-El
 Marsha and Ernie **Cohen** Term Endowment
 Robert I. and Shifrette D. **Cohen** Fund for Jewish Life
 Rebecca **Crow** Term Endowment Fund
 Ruth and Stephen **Dickstein** Endowment Fund
 C. Diane **Ealy** Endowment Fund
 Gary **Emerson** and Laury **Goll** Family Fund
 Harvey and Deanna **Evenchik** Endowment Fund
Fallen Soldiers Dependents Endowment
 Gary M. and Harriet E. **Fielding** Scholarship Endowment Fund
Freeman-Callahan Family Fund
 Enid and Irwin **Freedman** Endowment Fund
 Marlyne **Freedman** Endowment Fund
Gadarian Family Endowment Fund
 Charles S. **Gannon** and Andra T. **Karnofsky** Endowment Fund
Gasch Family Endowment Fund
 Janis Wolfe **Gasch** Lion of Judah Endowment Fund
 Donna and Jeff **Goldberg** Family Endowment
Golden Family Endowment Fund
 Melissa **Goldfinger** Lion of Judah Endowment Fund
 Adam and Dana **Goldstein** Big Heart Endowment Fund

Ellen **Goldstein** Forever Lion Endowment
 Harvey and Judith **Goodman** Family Endowment Fund
 Rebecca and Ted **Goodman** Endowment Fund
 Angie **Goorman** Lion of Judah Endowment Fund
 Norm and Ruth **Gosman** Endowment Fund
 Ronald S. **Grant** Endowment Fund
 Ronald and Margaret **Gray** Endowment Fund
 Harold & Edith **Greenberg** Family Fund Agreement
 Randy L. **Greenberg** Endowment Fund
 Liz and Eric **Groskind** Endowment Fund
 Martin **Grusin** Endowment Fund
 David and Anne **Hameroff** Family Endowment Fund
Hartin Heritage Fund
Henry Family Endowment Fund
 Wendell **Hicks** and Kevin **Casey** Endowment
 David and Davina **Hillman** Endowment Fund
 Richard A. **Isenberg** Fund
 Leonard and Marcelle **Joffe** Endowment Fund
 Deborah and John **Judin** Endowment Fund
 Ron and Norma **Karp** Family Endowment Fund
 Jeffrey S. and Francine L. **Katz** Endowment Fund
 Jeff and Adriana **Kaufman** Second Century Fund
 Rhonda **Knotts** Endowment Fund
 Nancy Alexander **Koff** Endowment Fund
 Nancy Alexander **Koff** Temple Emanu-El Term Endowment
 Edward **Koven** Endowment Fund
 Billie and Boris **Kozolchik** Endowment Fund
 Leonard and Harriet **Kronman** Endowment Fund
 Andrew and Linda **Kunsberg** Family Endowment Fund
 Brenna **Lacey** Lion of Judah Endowment Fund
Lacey-Rodgveller Endowment Fund
 Brenda and Steve **Landau** Family Endowment Fund
 Janet Osburn **Lang** Lion of Judah Endowment Fund
 Richard and Peggy **Langert** Family Endowment Fund
 Katrina **Lasko** Endowment Fund
Lederman Family Endowment Fund
 Judith and Michael **Lefton** Family Fund
 Aaron and Katherine **Leonard** Endowment Fund
 Edward L. **Leven** Endowment Fund
 Alan I. **Levenson** Endowment in Memory of Linda A. Nadell
 Bertie **Levkowitz** Lion of Judah Endowment Fund
 Jack and Bertie **Levkowitz** Endowment Fund
 Jeremy and Sharon **Lite** Endowment Fund
 Julius and Elaine **Litvack** Endowment Fund
 Thomas and Marcia **Louchheim** Family Endowment
 David and Anne **Lowe** Term Endowment
Mannlein Family Donor Advised Endowment Fund
 Marilyn and Michael **Marcus** Endowment Fund
 Cary and Fern **Marmis** Family Fund
Martin and **Brott** Endowment Fund
 Stu and Nancy **Mellan** Endowment Fund
 Evan **Mendelson** Endowment Fund
 Jennifer Miller **Grant** LOJE Fund
 Michael and Helene **Miron** Term Endowment Fund
 Donna **Moser** Lion of Judah Endowment Fund
 Hans and Donna **Moser** Term Endowment Fund
 Essie and George **Nadler** Endowment Fund
 Brooke Ann **Neuman** Endowment Fund

Thomas E. **Newman** Endowment Fund
Oberman Hall Family PIF Endowment Fund
 Deborah **Oseran** Lion of Judah Endowment Fund
Perl Family Endowment for JFSA
 Martha Loveman **Perl's** Lion of Judah Endowment Fund
 Martha and Terry Allen **Perl** Community Endowment Fund
 Martha and Terry Allen **Perl** Endowment for the Arts
 Martha and Terry Allen **Perl** Endowment for Disability Services
 Martha and Terry Allen **Perl** Endowment Fund
 Terry Allen **Perl** Jewish Federation Endowment Fund
 La Familia **Pimienta** Endowment Fund
 Melanie **Pozez** and Jay **Blumberg** Endowment Fund
 Shelley Jo **Pozez** Lion of Judah Endowment Fund
 Bobby **Present** and Deborah **Oseran** Endowment Fund
 Roshann Salkowitz **Pressman** Endowment Fund
 Samuel S. & Ivy Ruth **Reiter** Endowment Fund
 Scott **Rifkin** Endowment Fund
 Stephanie and Spencer **Roberts** Endowment Fund
Ronila Dream Fund
 Simon **Rosenblatt** and Louise W. **Greenfield** Endowment Fund
 Jeanne and Tevis **Ross** Endowment Fund
 Carol **Sack** Endowment Fund
 Tracy **Salkowitz** Lion of Judah Fund
 Tracy **Salkowitz** and Richard **Edwards** Endowment Fund
 Thomas **Sayler-Brown** Endowment Fund
 Helen and Howard **Schneider** Family Fund
 Steve **Schulman** and Elizabeth **Weiner-Schulman** Endowment Fund
 Lex and Carol **Sears** Endowment Fund
 Ronnie E. **Sebold** Legacy Fund
 Stephen and Janet **Seltzer** Family Endowment Fund
 Stephen and Janet **Seltzer** Term Endowment for Jewish Federation
 Stuart B. and Andrea **Shatken** Family Endowment Fund
 Deborah and David **Siegel** Endowment Fund
 Linda and Shelby **Silverman** Endowment Fund
 Jeff and Keri **Silvyn** Endowment Fund
 Howard and Karen **Skolnik** Endowment Fund
 Frances Geneva **Smith** Endowment Fund
Soaring Stars Endowment Fund
 Dr. Howard **Steinberg** Endowment Fund
 L. Jack and Irene D. **Steindler** Endowment Fund
 Robert A. & Olga G. **Strauss** Endowment Fund
 Janet **Thalberg** Endowment Fund
 Arts and Science Heritage Endowment in Recognition of Janet Ann and William Grant **Tiftt**
 Kathy and Jerry **Tucker** Endowment Fund
 Linda and Gerry **Tumarkin** Endowment Fund
 Charles L. **Weiner** Endowment Fund
 Leonard and Doris **Weiner** Endowment Fund
 James **Whitehill** Family Endowment Fund
 Silver **Wilkie** and Dinesh **Patel** Endowment Fund
Wochley Fund for Israel
 Dr. Eve A. **Wood** Fund for Jewish Observance
 Ruth A. **Zales** Fund
 Enid and Mel **Zuckerman** Endowment Fund

Every effort is made to ensure the accuracy of these fund lists which cover the period from January 1st to December 31st 2022. Some funds have been omitted at the donor's request for anonymity. We apologize if we inadvertently omitted your fund name; please let us know so that we may correct it for the future.

Donor Advised Funds: Charitable Giving Today

These funds allow donors to recommend distributions to charitable organizations they care about at any time. Distributions support hundreds of Jewish and broader community nonprofits locally, nationally, and globally each year. Partnering with our Foundation professionals, donors' legal and financial advisors, or individually, using these funds allow fund holders to achieve their maximum philanthropic impact while realizing immediate tax benefits.

William & Tauna **Abel** Philanthropic Fund
About Wishes Donor Advised Fund
Adams Family Philanthropic Fund
 Sarah and Jeff **Artzi** Donor Advised Fund
 Bruce & Jane **Ash** Philanthropic Fund
 Paul and Bridget **Ash** Philanthropic Fund
 David William Lewis **Aspinall** Donor Advised Fund
 Peter Jacob Ryan **Aspinall** Donor Advised Fund
 Rich **Bailowitz** and Elaine **Greenapple** Donor Advised Fund
 Lindsey and Joshua **Baker** Donor Advised Fund
 Paul & Alice **Baker** Philanthropic Fund
Ben-Asher Donor Advised Fund
 Eli **Beren** Donor Advised Fund
 Frances and Moe **Beren** Donor Advised Fund
 Rebecca **Beren** Donor Advised Fund
 Viryna **Beren** Donor Advised Fund
 J. Louis, Jr. and Tamar **Bergantino** Family Donor Advised Fund
 Phillip **Berman**, M.D. Memorial Fund
 Amy **Beyer** Donor Advised Fund
 Bruce & Donna **Beyer** Philanthropic Fund
 Professor Leon and Pauline **Blitzer** Teaching Award Fund
 Jason **Blumberg** and Sara **Sanchez** Donor Advised Fund
 Shawn **Blumberg** and Lauren **George** Donor Advised Fund
 Alma & Harold **Bongarten** Beneficial (ECE) Director Fund
 Bruce **Bracker** Donor Advised Fund
 Nellie **Bracker** Donor Advised Fund
Briefer Family Donor Advised Fund
Bronstein and Davidowitz Family Donor Advised Fund
 Steve and Susie **Bush** Donor Advised Fund
 Heather and Stephen **Caine** Donor Advised Fund
 Amy **Charles** and Steven **McMillan** Donor Advised Fund
Chavurah Giving Circle
Children's Education Fund
 Ruth F. & Samuel H. **Cohen** Rabbinic Chair at Temple Emanu-El
D.K. Advocates Donor Advised Fund
Deb-Bar Philanthropic Fund
 Adam J. **DeLuca** Donor Advised Fund
Diamond Family Philanthropic Fund
 Marilyn **Einstein** and Steven **Sim** Philanthropic Fund
 Harvey and Deanna **Evenchik** Philanthropic Fund
 Wendy and Richard **Feldman** Donor Advised Fund
 Chris **Ferrell** Memorial Donor Advised Fund
 Harriet E. and Gary M. **Fielding** Donor Advised Fund
 William & Wendy **Fishkind** Family Donor Advised Fund
 Madeline and Barry **Friedman** Donor Advised Fund
 Greg and Patty **Gadarian** Donor Advised Fund

FOUNDATION DONOR ADVISED FUNDS

Charles S. & Karen **Gannon** Philanthropic Fund
Charles S. **Gannon** and Andra T. **Karnofsky** Donor Advised Fund
Kristen & Larry **Gellman** Donor Advised Fund
Marc S. **Gendell** Philanthropic Fund
Andrew and Amanda **Glaser** Family Fund
Robert and Laurie Kaye **Glaser** Donor Advised Fund
Steven and Skylar **Glaser** Family Fund
Richard and Leslie **Glaze** Family Donor Advised Fund
Robert & Lesley **Goldfarb** Philanthropic Fund
Tedd and Melissa **Goldfinger** Donor Advised Fund
Ellen and David **Goldstein** Donor Advised Fund
Rebecca and Ted **Goodman** Family Fund
Jonathan and Rachel **Green** Donor Advised Fund
Michael Jay **Green** Philanthropic Fund
Richard F. **Green** and Joan **Auerbach Green** Donor Advised Fund
Harold & Edith **Greenberg** Philanthropic Fund
Eric and Liz **Groskind** Donor Advised Fund
Jack and Nadine **Grossi** Donor Advised Fund
Brina **Grusin** Donor Advised Fund
Denise **Grusin** Donor Advised Fund
Glenn **Grusin** Donor Advised Fund
Martin **Grusin** Donor Advised Fund
H2 Donor Advised Fund
Anne and David **Hameroff** Donor Advised Fund
Erin **Hameroff** Donor Advised Fund
Matthew **Hameroff** Donor Advised Fund
Hannah's Heroes Fund
Shellie & Kenneth **Harrison** Family Fund
Hirshberg Euler Family Fund
Hirshberg Family Donor Advised Fund
Jacob **Hirshberg** Family Donor Advised Fund
Jeremy and Shelley **Hirshberg** Fund
Graham N. **Hoffman** Donor Advised Fund
Liana **Hofstadter** Donor Advised Fund
Sarah **Hofstadter** Donor Advised Fund
Holocaust Survivors of Southern Arizona Donor Advised Fund
Hurand Connection Fund
Joshua and Ashley **Hurand** Donor Advised Fund
JNB Donor Advised Fund
Leonard and Marcelle **Joffe** Donor Advised Fund
Johannessen/Seeger Donor Advised Fund
Michael & Robin **Kaiserman** Philanthropic Fund
Daniel & Carol **Karsch** Family Philanthropic Fund
Jeffrey & Francine **Katz** Donor Advised Fund
K-D Family Donor Advised Fund
Judi W. **Kessler** Donor Advised Fund
Kessler **Timan** Family Fund
Gary and Tandy **Kippur** Family Donor Advised Fund
Alvin & Janice **Kivel** Philanthropic Fund
Foster and Carol **Kivel** Family Fund
MJ Kivel, LLC Donor Advised Fund
Kleinhans Family Fund
Neil O. **Kleinman** Family Fund
Nancy **Koff** Donor Advised Fund
Ron and Ruth **Kolker** Donor Advised Fund
Lawrence J. **Kramer** Memorial Donor Advised Fund
Leonard and Harriet **Kronman** Donor Advised Fund

Kunsberg Family Donor Advised Fund
L2 Philanthropic Fund
Lacey-Rodgveller Philanthropic Fund
Alma and Ed **Lakin** Education Donor Advised Fund
Steve and Brenda **Landau** Family Donor Advised Fund
Barry and Janet **Lang** Charitable Fund
Langer/Sampson Family Donor Advised Fund
Jenna **Langert** Donor Advised Fund
Joshua and Leah **Langert** Donor Advised Fund
Sarah **Langert** Donor Advised Fund
Sally **Lanyon** Donor Advised Fund
Katrina **Lasko** Donor Advised Fund
Joshua Ethan **Lederman** Donor Advised Fund
The **Leiken** Family Philanthropic Fund
Aaron and Katherine **Leonard** Donor Advised Fund
Lori **Levine** and Gary **Benna** Donor Advised Fund
Bertie and Jack **Levkowitz** Donor Advised Fund
Douglas B. and Nanci O. **Levy** Donor Advised Fund
Marcia and Thomas **Louchheim** Donor Advised Fund
Martin B. & Barbara S. **Mannlein** Donor Advised Fund
Margarete Shoah Fund
Clayton **Matheson** Memorial Donor Advised Fund
Stanley & Shirley **Matlick** Philanthropic Fund
Mickel Family Donor Advised Fund
Caron Marie **Mitchell** Donor Advised Fund
Thomas & Caren **Newman** Philanthropic Fund
Oberman Hall Family Fund
Daniel G. **Olitzky** Donor Advised Fund
Erin S. **Olitzky** Donor Advised Fund
Irving J. and Ruth B. **Olson** Foundation
Martha and Terry Allen **Perl** Donor Advised Fund
La Familia **Pimienta** Donor Advised Fund
Jacob & Ellen **Pinnas** Philanthropic Fund
Howard and Adrienne R. **Polster** Fund
Benjamin and Amy **Pozez** Donor Advised Fund
Pozez Family Fund in Memory of Shaol and Evelyn Pozez
Melanie **Pozez** and Jay **Blumberg** Donor Advised Fund
Mitchell and Robin **Pozez** Donor Advised Fund
Shelley Jo **Pozez** Donor Advised Fund
RCD Donor Advised Fund
Selma **Reese** Memorial Philanthropic Fund
Tucson **Richelson** Donor Advised Fund
Stephanie and Spencer **Roberts** Donor Advised Fund
Simon **Rosenblatt** and Louise W. **Greenfield** Donor Advised Fund
Dr. Herschel & Jill **Rosenzweig** Donor Advised Fund
Gary **Rosner** Donor Advised Fund in Memory of Carol Rosner
Lee **Rosner** Donor Advised Fund in Memory of Carol Rosner
Mark and Bari **Ross** Donor Advised Fund
Matthew **Rothman** Donor Advised Fund
Rothstein Tzedaka Fund
Aaron **Rottenstein** and Stephanie **Bowers** Donor Advised Fund
Myron and Anna **Rottenstein** Donor Advised Fund
Tracy **Salkowitz** and Richard **Edwards** Donor Advised Fund
Sampson Family DAF
Brent and Neresia **Sandweiss** Donor Advised Fund
Sara's Fun Fund
Irene **Sarver** Philanthropic Fund

Schindler Family Donor Advised Fund
Schorr Family Donor Advised Fund
 Sarah and Leonard **Schultz** Donor Advised Fund
 Steven **Schulman** & Elizabeth **Weiner-Schulman** Donor Advised Fund
Schwager Family Donor Advised Fund
 Lex and Carol **Sears** Donor Advised Fund
Shiner Family Donor Advised Fund
 Michael and Melissa **Shiner** Donor Advised Fund
 Arlo **Silverman** Donor Advised Fund
 Bernard **Silverman** Donor Advised Fund
 Daniel and Eleanor **Silverman** Family Fund
 Max **Silverman** Donor Advised Fund in Honor of Rosalyn and Alexander Silverman
 Sophia **Silverman** Donor Advised Fund in Honor of Rosalyn and Alexander Silverman
 Jeff and Keri **Silvyn** Donor Advised Fund
Spring Family Fund
 Michael and Carolyn **Stelman** Philanthropic Fund
 Joyce and Jim **Stuehringer** Donor Advised Fund
Sweeney Donor Advised Fund
Tankenoff Family Philanthropic Fund
 Arts and Science Heritage Fund in Recognition of Janet Ann and William Grant **Tifft**
 Ethel & Jerry **Timan** Family Fund
 Miriam H. **Tischler** Donor Advised Fund
 Kathy and Jerry **Tucker** Donor Advised Fund
 Gerald & Linda **Tumarkin** Philanthropic Fund
 Noa Hammes **Vallance** B'nai Tzedek Fund
 Martin **Waldbaum** Family Fund
We Believe in You Donor Advised Fund
 Leonard & Doris **Weiner** Family Fund
 Tamir and Naomi **Weiner** Family Fund
 Ronald & Diane **Weintraub** Donor Advised Fund
 Sherman L. **Weitzmon** Donor Advised Fund
Wexler Family Fund
 Allison **Whitehill** Donor Advised Fund
 Andrew **Whitehill** Donor Advised Fund
Whitehill Rodda Family Leadership Donor Advised Fund
 Silver **Wilkie** and Dinesh **Patel** Donor Advised Fund
Wolk Family Fund
 Ari Goldfein **Yahrok** Donor Advised Fund
 Kathleen **Zavatsky** Memorial Donor Advised Fund
 Al **Zehngut** Donor Advised Fund
 Dina **Zehngut** & David **Zehngut** Donor Advised Fund
 Mel and Enid **Zuckerman** Donor Advised Fund

Every effort is made to ensure the accuracy of these fund lists which cover the period from January 1st to December 31st 2022. Some funds have been omitted at the donor's request for anonymity. We apologize if we inadvertently omitted your fund name; please let us know so that we may correct it for the future.

Community Organization Funds: Strengthening our Nonprofits

These organizations have established funds with the Foundation and benefit from expert planning and endowment development support, centralized investments, fund accounting and administration services. While all have different missions, they share a common desire to ensure the health of the community – now and for future generations.

America-Israel Friendship League Endowment Fund

Arizona Youth Partnership Custodial Fund

Beth Shalom Temple Center Custodial Fund

Children's Advocacy Center Endowment Fund

Congregation Anshei Israel

Amhowitz Custodial Fund

Congregation Anshei Israel Education Endowment Fund

Congregation Anshei Israel Endowment Fund

Evie and Shaol Pozez USY Endowment Fund

Mervin Vogel Endowment Fund for Adult Education

Congregation Bet Shalom

Bet Shalom Endowment Fund to Meet Tomorrow's Needs

Congregation Chaverim

Jacqueline Anne Morris Memorial Tuition Scholarship Fund

Congregation Chofetz Chayim

Naomi Adir Special Project Fund for Chofetz Chayim/
SW Torah Institute

Chofetz Chayim/SW Torah Institute Education Fund

Diaper Bank of Southern Arizona Endowment Fund

The Drawing Studio Endowment Fund Inspired by Andy Rush

El Rio Center Foundation Custodial Fund

The Gregory School Endowment Fund

Interfaith Community Services Custodial Fund

Jewish Community Foundation of Greater Prescott

Jewish Community Foundation of New Mexico

Jewish Family & Children's Services

Jewish Family & Children's Services of Southern Arizona
Endowment Fund

Jewish Family & Children's Services of Southern Arizona Fund

Kol Ami Synagogue

Rabbi Bilgray Memorial Fund for Jewish Education

Mitch Dorson Scholar-in-Residence Fund

Howard Gerson Memorial Grounds Beautiful Fund

Kol Ami Donor Fund

Kol Ami Endowment Fund

Kol Ami Synagogue/Congregation Or Chadash Legacy
Endowment Fund

Literacy Connects Legacy Fund

League of Women Voters of Greater Tucson Endowment Fund

Mobile Meals of Southern Arizona Endowment Fund

Our Family Services

Charles R. Lacy Memorial Fund for Homeless Teens

Our Family Services Endowment Fund

Our Family Services Tucson Foundations Endowment in Honor
of George Mason Green & Lois C. Green

Roots & Roads Community Hospice Foundation Endowment

Second Street Children's School

Second Street Children's School Custodial Fund
Second Street Children's School Endowment Fund

Sickle Cell Foundation of Arizona Endowment Fund**Southern Arizona AIDS Foundation**

SAAF Endowment Fund for the Future
The SAAF Thornhill Lopez Center on 4th Custodial Fund

Step Up to Justice Custodial Fund**Tucson Fire Foundation** Endowment Fund**Tucson Hebrew Academy**

Edith Arnstein Endowment for THA
Ruth Barlin Scholarship Endowment Fund
Stanley & Teddi Barlin Endowment Fund for THA
L'Dor V'Dor Endowment for Tucson Hebrew Academy
Tucson Hebrew Academy Capital Fund

Tucson Jewish Community Center

Paul Ash Family Maccabi Youth Endowment Fund
Diamond Campership/Scholarship Fund
Diamond Family Tucson Jewish Community Center Fund
Freedman Aquatic Scholarship Fund
George and Roslyn Girard Miller Camp Scholarship Fund
Tucson Jewish Community Center Endowment Fund
Tucson Jewish Community Center Sculpture Garden Fund
Tucson Jewish Community Center Weinberg Fund

The Tucson Free Loan Fund**Tucson Jewish Museum and Holocaust Center**

Building Preservation Fund for the Jewish History Museum
Jewish History Museum/Holocaust History Center Legacy
Endowment Fund

Tu Nidito Children and Family Services Endowment Fund**University of Arizona Hillel Foundation** Fund**Youth On Their Own**

Fischman Endowment for Youth On Their Own

Jewish Philanthropies of Southern Arizona Funds:**Jewish Community Foundation of Southern Arizona**

Donald Baker Fund
Donald Diamond Memorial Fund
JCF Community Impact Fund
JCF Emerging and Emergency Jewish Needs Fund
JCF Endowment for Jewish Elderly and Disabled
JCF Israel Discovery Fund
JCF Israel Scholarship Fund for Civic Leaders
Jewish Community Pandemic Relief Fund
Kahn Family Legacy Fund
Karsch Family Endow 18 Fund
Michael Krupnick Endowment Fund
PJ Library Community Endowment
Bryna Zehngut Community Fund

Jewish Federation of Southern Arizona

Aaron Alexander Memorial Fund
Ben and Betty Brook Professional of the Year Awards Fund
Community Fund to Support Jewish Elderly and Disabled
Edward M. Jackson Endowment Fund
JFSA/ACJS Community Builders Fund
JFSA Campaign Funds
JFSA Council House Fund
JCRC Interfaith Mission Fund

JCRC Social Justice Fund

Rabbi Lee A. Kivel Lecture on Jewish Life Endowment Fund

John Likins Scholarship Fund

Rabbi Arthur Oleisky Teen Recognition Fund

Deborah Oseran Endowment Fund

Marian Roland Memorial Fund

Gert and Fred Rosen Endowment Fund

Cindy Wool Memorial Seminar Fund

Every effort is made to ensure the accuracy of these fund lists which cover the period from January 1st to December 31st 2022. Some funds have been omitted at the donor's request for anonymity. We apologize if we inadvertently omitted your fund name; please let us know so that we may correct it for the future.

JEWISH PHILANTHROPIES OF SOUTHERN ARIZONA BOARD OF TRUSTEES 2022-2023

Bruce Ash
Co-Chair

Anne Hameroff
Co-Chair

Aaron Rottenstein
Vice-Chair

Jeff Jacobson
Secretary/Treasurer

Lisa Lovallo
Assistant Secretary/Treasurer

Liz Kanter Groskind
At Large

Emily Richman
Interim CEO

TRUSTEES

Morgan Abraham

Jeff Artzi

Alec Berens

Debbie Goodman Butler

Elizabeth Friman

Danny Gasch

Leah Geistfeld

Adam Goldstein

Jeff Katz

Helaine Levy

Ann Lovell

Isaac Rothschild

Lex Sears

Jeremy Sharpe

Scott Sheftel

Ben Silverman

Shelly Silverman

PAST FEDERATION CHAIRS

Bruce Ash

Jack Cole

Richard Fink

Harold Greenberg

Carol Karsch

Jeff Katz

Carole Levi

Steven Lightman

Jennifer Miller Grant

Deborah Oseran

Bobby Present

S. Leonard Scheff

Shelly Silverman

Linda Tumarkin

Kathryn Unger

Tom Warne

PAST FOUNDATION CHAIRS

Bruce Beyer

Harold Bongarten

Daniel Gasch

Gerald Gendell

Harold Greenberg

Anne Hameroff

Jeff Katz

Brenna Lacey

Jerry Neuman

Stuart Shatken

Keri Silvyn

Saul Tobin

James Whitehill

FEDERATION LIFE MEMBERS

Paul Baker

Bruce Beyer

Donna Beyer

Nathaniel Bloomfield

Fran Katz

Karen Katz

Ronald Kolker

Essie Nadler

Lynda Rogoff

Lex Sears

Janet Seltzer

Carol Stern

Meryl Tischler

Gerry Tumarkin

Ronald Weintraub

Charles Whitehill*

James A. Whitehill

Ruth Zales

BENEFICIARY AGENCIES

Jewish Family & Children's Services

Tucson Hebrew Academy

Tucson Jewish Community Center

Tucson Jewish Museum & Holocaust Center

University of Arizona Hillel Foundation

*Proud Partner of Jewish Federations
of North America*

**JEWISH PHILANTHROPIES OF SOUTHERN ARIZONA STAFF****EXECUTIVE**

Emily Richman, Interim CEO

Jane Espinoza, VP of Fund Services

Laura McKee, Executive Assistant to the CEO

FINANCE

Kimberly L. Driskell, CFO

Kitty Wu, HR & Payroll Coordinator

Michael Gerber, Senior Accountant

Anel Pro, Cash Coordinator

Nichole Snyder, Accounts Payable Coordinator

CAMPAIGN AND WOMEN'S PHILANTHROPY

Andrew Gale, Campaign Manager

Peter Kane, Project & Database Manager

Maleny Martinez, Development Assistant

LEGACY

Brenda Landau, Director of Legacy Development

MARKETING, COMMUNICATIONS & EVENTS

Jennifer Lightman, VP of Marketing & Communications

Chris Firmage, Marketing Coordinator

COMMUNITY ENGAGEMENT

Amy Glass, VP of Strategy & Community Impact

Robyn Schwager, Community Impact Manager

Jacob Meyer, Community Impact Manager

Arielle Shemesh, Community Impact Project Coordinator

ADMINISTRATION & FACILITIES

Laura Nachtrab, Administrative Services Manager

SECURITY

Paul Patterson, Security Director

Chelsea Gutierrez, Security Director

CORPORATE SPONSORS

THANK YOU TO OUR CORPORATE SPONSORS

PLATINUM



GOLD



SILVER



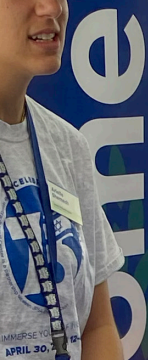
BRONZE



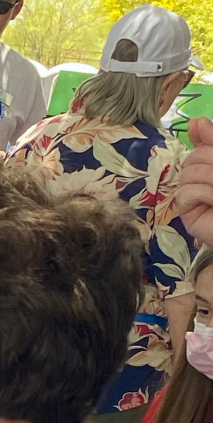
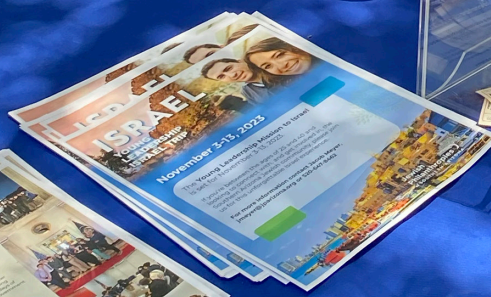
James D. Wezelman
Donor Advised Fund



Jewish Philanthropies
of SOUTHERN ARIZONA



APRIL 30, 2022



Vision:

To achieve the full potential of Jewish philanthropy, now and for future generations.

Mission:

Jewish Philanthropies of Southern Arizona partners with organizations, families, and individuals to foster and enhance community and respond to those in need – enriching Southern Arizona, the Jewish people, and the world.

**Jewish
Philanthropies**
of SOUTHERN ARIZONA



Harvey & Deanna Evenchik Center for Jewish Philanthropy
3718 East River Rd. | Tucson, AZ 85718
520-577-9393
jparizona.org

