

Daily Enrichments


Children participate in daily specialized activities with others in their respective age group (K-2) or (3-5).

Enrichment instructors are experienced and trained professionals who adapt their skills into age-appropriate activities for the children.


All enrichments are included in the monthly fee.

Some of our past enrichments include:


Arts & Crafts




Chess




Engineering



Martial Arts




Performing Arts




Sports



Swim



Yoga



"We are so happy Madison was able to attend Club J - she loves the activities and all of the people involved - such a fun and caring group!"



CLUB J
after school program

*Club J is open during school vacation days, planning days, some holidays and various other school closings. Hours on these days are 7:30 AM - 6:00 PM.

2020 - 2021 CALENDAR

August 2020						
Su	M	T	W	Th	F	Sa
						1
2	3	4	5	6	7	8
9	10	11	12	13	14	15
16	17	18	19	20	21	22
23 30	24 31	25	26	27	28	29
October 2020						
Su	M	T	W	Th	F	Sa
				1	2	3
4	5	6	7	8	9	10
11	12	13	14	15	16	17
18	19	20	21	22	23	24
25	26	27	28	29	30	31
December 2020						
Su	M	T	W	Th	F	Sa
		1	2	3	4	5
6	7	8	9	10	11	12
13	14	15	16	17	18	19
20	21	22	23	24	25	26
27	28	29	30	31		
February 2021						
Su	M	T	W	Th	F	Sa
	1	2	3	4	5	6
7	8	9	10	11	12	13
14	15	16	17	18	19	20
21	22	23	24	25	26	27
28						
April 2021						
Su	M	T	W	Th	F	Sa
				1	2	3
4	5	6	7	8	9	10
11	12	13	14	15	16	17
18	19	20	21	22	23	24
25	26	27	28	29	30	

September 2020						
Su	M	T	W	Th	F	Sa
		1	2	3	4	5
6	7	8	9	10	11	12
13	14	15	16	17	18	19
20	21	22	23	24	25	26
27	28	29	30			
November 2020						
Su	M	T	W	Th	F	Sa
1	2	3	4	5	6	7
8	9	10	11	12	13	14
15	16	17	18	19	20	21
22	23	24	25	26	27	28
29	30					
January 2021						
Su	M	T	W	Th	F	Sa
					1	2
3	4	5	6	7	8	9
10	11	12	13	14	15	16
17	18	19	20	21	22	23
24 31	25	26	27	28	29	30
March 2021						
Su	M	T	W	Th	F	Sa
	1	2	3	4	5	6
7	8	9	10	11	12	13
14	15	16	17	18	19	20
21	22	23	24	25	26	27
28	29	30	31			
May 2021						
Su	M	T	W	Th	F	Sa
						1
2	3	4	5	6	7	8
9	10	11	12	13	14	15
16	17	18	19	20	21	22
23 30	24 31	25	26	27	28	29



License #STA433534
522 N. Howard Ave. Tampa, FL 33606



Tuition & Fees

	Member	Guest
School Pick-Up (monthly)		
Gorrie	\$390	\$450
Mabry	\$390	\$450
Mitchell	\$340	\$400
Drop-Off (monthly)		
No Transportation	\$300	\$360

Non-refundable
registration fee: \$150
\$25/additional child

10% discount for
each additional child
within a family

– Tuition and Fees reflect the varied school dismissal times –



Transportation

Transportation* to the Bryan Glazer Family JCC is currently provided from the following elementary schools:

Gorrie

Mabry

Mitchell

*Minimum registration of four children per school is required for a location to qualify for pick up.

Drop-off is an alternative option for those enrolled at schools not listed above.



Contacts

Youth and Teen Program Manager
813.291.2252

Youth and Teen Program Coordinator
813.291.2254

A Day at Club J

Transportation

Club J picks children up at school dismissal and brings them back to the JCC.

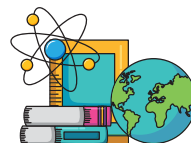


Snacks

We provide nutritious snacks after arrival while the children enjoy social time with friends.

Homework

Children work on homework in a designated quiet space with the help of educated counselors. Our homework rooms are equipped with the necessary supplies to complete academic work.



Enrichment

Children participate in specialized activities with others in their age group.



Free Time

Children are free to socialize and play games with their peers in a structured setting.



For more information, visit
BryanGlazerFamilyJCC.com/ClubJ
or JCCohnCampus.com/ClubJ



License #SHC110461
13009 Community Campus Dr. Tampa, FL 33625



Tuition & Fees

	Member	Guest
(monthly)		
Ten Month Includes vacation days	\$390	\$450
Year-Round Includes summer camp + vacation days	\$495	\$550
Drop-Off (monthly)		
No Transportation	\$300	\$360

Non-refundable
registration fee: \$150
\$25/additional child

10% discount for
each additional child
within a family



Transportation

Transportation* to the JCC on the Cohn Campus is currently provided from the following elementary schools:

Citrus Park
Deer Park
Essrig

Hammond
Mary Bryant
McKittrick

Westchase

*Minimum registration of four children per school is required for a location to qualify for pick up.

Drop-off is an alternative option for those enrolled at schools not listed above.



Contacts

Youth and Teen Program Manager
813.769.4748

Youth and Teen Program Coordinator
813.769.4728