



Jewish  
Federation  
ORANGE COUNTY

WOMEN'S  
PHILANTHROPY

# VOICES

LEADING TOGETHER

Sponsorship  
Opportunities

---

THURSDAY | MARCH 12 | 2026  
IRVINE, CA

# A Message From Our Leadership

Dear Corporate Partners,

As we look ahead to the coming year, I am proud to share that Jewish Federation of Orange County will once again bring our community together for VOICES 2026. VOICES 2026 is where Orange County's most engaged business, philanthropic, and civic leaders come together—providing a unique visibility and relationship-building opportunity for brands invested in strengthening our region.

This year, we are honored to welcome **Rachel Goldberg-Polin** and **Jon Polin**, whose story has inspired a global movement of courage, hope, and unwavering advocacy. Their presence will remind us of the profound responsibility we share in standing together as a community. We are also privileged to recognize **Judy Binder** as our *2026 Woman of the Year*, celebrating her lifelong commitment to philanthropy, Jewish learning, and compassionate leadership.

While VOICES stands as a highlight of the year, it is part of a much broader and essential mission. This last year alone, **Jewish Federation of Orange County has invested more than \$4.7M in programs** that safeguard Jewish life and strengthen our community—from combating antisemitism in local schools, to expanding community security initiatives, to deepening Jewish education and impacting families across Orange County.

We believe that when the Jewish community in Orange County is strong, safe, and connected, the entire region thrives. As a corporate partner, your support directly fuels this mission. Sponsoring VOICES 2026 offers meaningful visibility and connection—and an opportunity to engage business leaders, philanthropists, major donors, and highly committed community members. But more importantly, it aligns your brand with a trusted institution making measurable impact at a time when community resilience, education, and safety are critical priorities.

Together, we can honor remarkable leaders, uplift our community, and build a stronger, more secure future for Jewish Orange County.

Warm Regards,



Stephanie Epstein  
COO & Acting CEO  
Jewish Federation of Orange County



# A Highly Affluent, High-Value Audience

VOICES attracts one of the most desirable audiences in Orange County—an influential, high-income, and deeply engaged group with significant purchasing power and strong philanthropic behavior. For corporate partners, VOICES offers direct access to leaders who drive economic, civic, and cultural life across the region.



- Core markets: Newport Coast, Newport Beach, Corona del Mar, Irvine
- Median household income: **\$158K–\$187K**
- Home values: **\$1.7M–\$5.2M**

**AFFLUENT &  
HIGH-INCOME**



- 29% of attendees donated **\$215K+**
- Average annual gift: **\$689**
- Newport Beach average annual gift: **\$1,354**

**PHILANTHROPIC  
& ENGAGED**



- Highly educated, many with advanced degrees
- Strong representation from **healthcare, legal, finance,** and **executive leadership**

**EDUCATED &  
PROFESSIONALLY  
INFLUENTIAL**



- Broad leadership age range: **35–76**
- Majority are homeowners in high-equity communities

**DEMOGRAPHICALLY  
STRONG**

# The Impact of Philanthropy

In Orange County – where philanthropy is woven into corporate culture – **brands that show leadership in community investment stand out.**



89% of consumers state they would switch brands to one associated with a good cause.



92% of consumers are more likely to trust a company that supports a cause.



83% of consumers want brands to support causes that are important to their local community.



73% of consumers are willing to spend more on a product if it supports a cause they care about.

Sponsoring VOICES positions your brand at the intersection of corporate citizenship and community impact **at a moment when it matters most.**





## Honoring the Voices Behind VOICES

FEATURED GUESTS

### Rachel Goldberg-Polin and Jon Polin

Jon Polin and Rachel Goldberg-Polin became global advocates for hostage freedom after their son, Hersh, was kidnapped by Hamas on October 7, 2023, following severe injury. For nearly a year, they traveled the world meeting with leaders, speaking publicly, and urging action for Hersh and all hostages. On day 330, the IDF confirmed Hersh was murdered in captivity along with five other young hostages.

Despite unimaginable loss, Jon and Rachel continue to share their story and their message of hope and resilience across the globe, including VOICES 2026. Grounded in their faith and sustained by community support, they have turned their grief into purpose: working toward a more vibrant Israel and a strong, democratic Jewish life. Their commitment to tikkun olam inspires action, builds resilience, and rallies others to join in communal repair.



# Honoring the Voices Behind VOICES

MODERATOR

## Jacki Karsh

Jacki Karsh is a six-time Emmy-nominated journalist with more than a decade of reporting for the LA County Channel, where she covers civic life, culture, and humanitarian issues across Los Angeles. Her earlier work includes The Westside Current, Westside TV, CityTV Santa Monica, and Young Hollywood.

Widely recognized for eliciting clarity and candor from influential leaders, Jacki has conducted thousands of conversations across public policy, national security, philanthropy, business, and culture. She is also a frequent emcee for leading institutions including the Milken Global Institute, Duke University, the City of Beverly Hills, Teach Coalition, The Montgomery Summit, and Combat Antisemitism.

Since October 7th, Jacki has led nearly 100 public conversations on the Israel– Hamas war and media bias, and her writing has appeared in The Times of Israel, The Hill, JNS, and the Jewish Journal. She is the founder of the Karsh Journalism Fellowship and serves on the boards of Jewish Federation Los Angeles, the Columbia Alumni Association of Southern California, AKLA, One Mitzvah a Day, and If You Heard What I Heard. Jacki holds two degrees from Columbia University and lives in Los Angeles with her husband and three children.



## Honoring the Voices Behind VOICES

2026 WOMAN OF THE YEAR

# Judy Binder

Judy Binder's life has been a quiet embodiment of philanthropy and the preservation of Jewish culture. Raised in Arcadia, California, in a family deeply involved in Jewish life, she developed an early commitment to service through her local synagogue, BBG, the Anti-Defamation League, and the Jewish Federation of Los Angeles.

Throughout her adult life, Judy has championed causes rooted in dignity, compassion, and education. Her leadership includes serving on the Board of Providence St. Joseph Medical Center and becoming a passionate advocate for Alzheimer's awareness after caring for her mother. In 2016, she was honored by Alzheimer's Orange County as the Philanthropy Partner Honoree for her philanthropic partnership.

After settling in Newport Beach, Judy and her husband, Phil, became active members of Temple Bat Yahm. Through Jewish Federation of Orange County, she joined Women's Philanthropy as a Lion of Judah and later served as Chair of the Lion of Judah Committee, focusing on strengthening connections and engagement among women leaders. Judy and her Foundation also proudly support Student to Student, empowering teens to confront antisemitism.

Judy's generosity is grounded not in recognition, but in responsibility, legacy, and love for her people. As the 2026 Women's VOICES Woman of the Year, she embodies the spirit of VOICES, elevating stories, service, and the power of women who lead with purpose.

Join previous VOICES sponsors who have invested in a stronger, safer Orange County.

## Prior Sponsors

---

LUGANO







**"I LOVED THE SPEAKERS  
AND STORIES!"**

**2025 VOICES ATTENDEE**

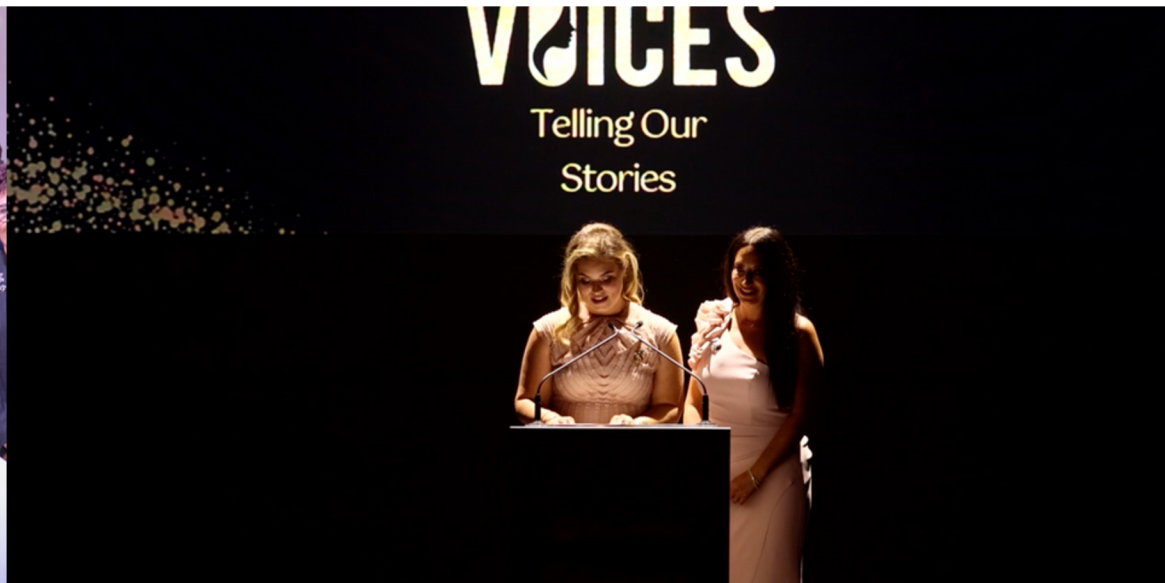


**"BEING TOGETHER AS JEWISH  
WOMEN DURING DIFFICULT TIMES IS  
SO IMPORTANT!"**

**2025 VOICES ATTENDEE**

**"I HOPE ALL OF MY  
FRIENDS WILL JOIN ME  
FOR 2026!"**

**2025 VOICES ATTENDEE**



# SPONSOR BENEFITS

	Title Sponsor	Special Guest Sponsor	Diamond Sponsor	Sapphire Sponsor	Ruby Sponsor	Emerald Sponsor	Lion of Judah Reception Sponsor	Photo Booth Sponsor	Bar Sponsor	Amethyst Sponsor	Topaz Sponsor	Woman of the Year Recognition
	\$30,000	\$25,000	\$20,000	\$15,000	\$10,000	\$7,500	\$5,000	\$3,500	\$3,000	\$2,500	\$1,500	\$180
Title Sponsor recognition including speaking from the mainstage.	✓											
30–60 second branded ad or segment at the event (limited to 3 sponsors & sponsor provided).	✓	✓	✓									
Opportunity to distribute printed or branded swag items (sponsor provided).	✓	✓	✓	✓	✓		✓*					
Premium tickets (including premiere placement and Lion of Judah Reception).	6	4	4	2	2	1	2					
General Admission Tickets.	4	4	4	4	2	2		2	2	2	1	
Opportunity to purchase additional premium tickets (at a discount – pending availability).	✓	✓	✓	✓	✓							
Logo with link on VOICES landing/registration pages.	✓	✓	✓	✓	✓	✓	✓	✓	✓	✓	✓	
Logo inclusion in VOICES marketing materials (print/digital).	✓	✓	✓	✓	✓	✓	✓	✓	✓	✓	✓	
Logo inclusion on day-of sponsor signage.	✓	✓	✓	✓	✓	✓	✓	✓	✓	✓	✓	
Dedicated sponsor signage.							✓	✓	✓			
Logo/Name inclusion in digital event loop.	✓	✓	✓	✓	✓	✓	✓	✓	✓	✓	✓	✓
Opportunity for personalized tribute message/photo in Woman of the Year book. (printed and presented to WOY)												✓

\*To Lion of Judah Reception Attendees

# VOICES Opportunities and Benefits



Jewish  
Federation  
ORANGE COUNTY

WOMEN'S  
PHILANTHROPY

## Title Sponsor

**\$30,000\***

(Limited to 1 Sponsor)

- Title Sponsor recognition including speaking from the mainstage.
- 30–60 second branded ad or segment at the event (limited to 3 sponsors & sponsor provided).
- Opportunity for up to 4 guests to attend a meet & greet with special guest(s) – this is not guaranteed and we will do our best to deliver.
- Opportunity to distribute printed or branded swag items (sponsor provided).
- 6 Premium Tickets (valued at \$1,200) including Lion of Judah pre-event reception.
- 4 General Admission Tickets (valued at \$544).
- Opportunity to purchase additional premium and general admission tickets (at a discount – pending availability).
- Logo with link on VOICES landing/registration pages.
- Logo inclusion in VOICES marketing materials (print & digital).
- Logo inclusion in day-of sponsor signage.
- Logo/Name inclusion in digital event loop.

\* \$29,230 is tax deductible

## Special Guest Sponsor

**\$25,000\***

(Limited to 1 Sponsor)

- 30–60 second branded ad or segment at the event (limited to 3 sponsors & sponsor provided).
- Opportunity for up to 2 guests to attend a meet & greet with special guest(s) – this is not guaranteed and we will do our best to deliver.
- Opportunity to distribute printed or branded swag items (sponsor provided).
- 4 Premium Tickets (valued at \$800) including Lion of Judah pre-event reception.
- 4 General Admission Tickets (valued at \$544).
- Opportunity to purchase additional premium and general admission tickets (at a discount – pending availability).
- Logo with link on VOICES landing/registration pages.
- Logo inclusion in VOICES marketing materials (print & digital).
- Logo inclusion in day-of sponsor signage.
- Logo/Name inclusion in digital event loop.

\* \$24,400 is tax deductible



# VOICES Opportunities and Benefits



Jewish  
Federation  
ORANGE COUNTY

WOMEN'S  
PHILANTHROPY

## Diamond Sponsor

**\$20,000\***

- 30–60 second branded ad or segment at the event (limited to 3 sponsors & sponsor provided).
- Opportunity to distribute printed or branded swag items (sponsor provided).
- 4 Premium Tickets (valued at \$800) including Lion of Judah pre-event reception.
- 4 General Admission Tickets (valued at \$544)
- Opportunity to purchase additional premium and general admission tickets (at a discount – pending availability).
- Logo with link on VOICES landing/registration pages.
- Logo inclusion in VOICES marketing materials (print & digital).
- Logo inclusion in day-of sponsor signage.
- Logo/Name inclusion in digital event loop.

(Limited to 1 Sponsor)

\* \$19,400 is tax deductible

## Sapphire Sponsor

**\$15,000\***

- Opportunity to distribute printed or branded swag items (sponsor provided).
- 2 Premium Tickets (valued at \$400) including Lion of Judah pre-event reception.
- 4 General Admission Tickets (valued at \$544).
- Opportunity to purchase additional premium and general admission tickets (at a discount – pending availability).
- Logo with link on VOICES landing/registration pages.
- Logo inclusion in VOICES marketing materials (print & digital).
- Logo inclusion in day-of sponsor signage.
- Logo/Name inclusion in digital event loop.

\* \$14,570 is tax deductible



# VOICES Opportunities and Benefits



Jewish  
Federation  
ORANGE COUNTY

WOMEN'S  
PHILANTHROPY

## Ruby Sponsor

**\$10,000\***

- Opportunity to distribute printed or branded swag items (sponsor provided).
- 2 Premium Tickets (valued at \$400) including Lion of Judah pre-event reception.
- 2 General Admission Tickets (valued at \$272).
- Opportunity to purchase additional premium and general admission tickets (at a discount - pending availability).
- Logo with link on VOICES landing/registration pages.
- Logo inclusion in VOICES marketing materials (print & digital).
- Logo inclusion in day-of sponsor signage.
- Logo/Name inclusion in digital event loop.

\* \$9,700 is tax deductible

## Emerald Sponsor

**\$7,500\***

- Opportunity to distribute printed or branded swag items (sponsor provided).
- 1 Premium Ticket (valued at \$200) including Lion of Judah pre-event reception.
- 2 General Admission Tickets (valued at \$272).
- Logo with link on VOICES landing/registration pages.
- Logo inclusion in VOICES marketing materials (print & digital).
- Logo inclusion in day-of sponsor signage.
- Logo/Name inclusion in digital event loop.

\* \$7,285 is tax deductible

# VOICES Opportunities and Benefits



Jewish  
Federation  
ORANGE COUNTY

**WOMEN'S  
PHILANTHROPY**

## Lion of Judah Reception Sponsor

**\$5,000\***

- Dedicated sponsor signage and recognition at Lion of Judah Reception.
- Opportunity to distribute printed or branded swag items at Lion of Judah Reception (sponsor provided).
- 2 Premium Tickets (valued at \$400) including Lion of Judah pre-event reception.
- Logo with link on VOICES landing/registration pages.
- Logo inclusion in VOICES marketing materials (print & digital).
- Logo inclusion in day-of sponsor signage.
- Logo/Name inclusion in digital event loop.

\* \$4,830 is tax deductible

(Limited to 3 Sponsors)

## Photo Booth Sponsor

**\$3,500\***

- Dedicated sponsor signage at Photo Booth.
- 2 General Admission Tickets (valued at \$272).
- Logo with link on VOICES landing/registration pages.
- Logo inclusion in VOICES marketing materials (print & digital).
- Logo inclusion in day-of sponsor signage.
- Logo/Name inclusion in digital event loop.

\* \$3,370 is tax deductible

# VOICES Opportunities and Benefits



Jewish  
Federation  
ORANGE COUNTY

WOMEN'S  
PHILANTHROPY

## Bar Sponsor

**\$3,000\***

- Dedicated sponsor signage at Bar(s).
- 2 General Admission Tickets (valued at \$272).
- Logo with link on VOICES landing/registration pages.
- Logo inclusion in VOICES marketing materials (print & digital).
- Logo inclusion in day-of sponsor signage.
- Logo/Name inclusion in digital event loop.

\* \$2,870 is tax deductible

(Limited to 2 Sponsors)

## Amethyst Sponsor

**\$2,500\***

- 2 General Admission Tickets (valued at \$272).
- Logo with link on VOICES landing/registration pages.
- Logo inclusion in VOICES marketing materials (print & digital).
- Logo inclusion in day-of sponsor signage.
- Logo/Name inclusion in digital event loop.

\* \$2,370 is tax deductible

## Topaz Sponsor

**\$1,500\***

- 1 General Admission Ticket (valued at \$136).
- Logo with link on VOICES landing/registration pages.
- Logo inclusion in VOICES marketing materials (print & digital).
- Logo inclusion in day-of sponsor signage.
- Logo/Name inclusion in digital event loop.

\* \$1,435 is tax deductible

## **\*\*New This Year! Premium Table\*\***

**\$2,036\***

Lion of Judah donors (giving an annual gift of \$5,000+) will have the opportunity to buy a Premium Table for 10.

Table includes 2 Premium Tickets (including Lion of Judah Reception) and 8 General Admission Tickets.

Guests do not need to make a minimum contribution.

Table includes premiere placement.

\*\$1,346 is tax deductible

## **Woman of the Year Tribute**

**\$180\***

- Opportunity for personalized tribute message/photo in WOY book
- (printed and presented to WOY).
- Name inclusion in digital event loop.

\* Fully tax deductible

---

For More Information or Questions, please contact

**Senior Manager, Events Dana Bloom at 949-435-3484 ext. 366 or [women@jfedoc.org](mailto:women@jfedoc.org)**

Please provide sponsor logo in the following format for recognition: full color JPG or PNG 300-600 dpi and full white PNG 300-600 dpi (vector format preferred).

Sponsors can increase the tax deductibility by reducing the number of tickets included.

Pending availability, sponsors can upgrade General Admission Tickets to Premium Tickets.

For inclusion in the event program, your commitment (including payment) must be received by  
**Friday, February 20, 2026**