



2019-2020



**JEWISH LONG BEACH: A NEW
AGENCY SERVING A CHANGED WORLD**

Table of Contents

Letter from the President and CEO..... 3

Our Impact 4

In the Words of Those We Serve 5

Your Donor Dollars at Work 6

Our Financials 7

Leadership and Staff 8



To Our Jewish Community

One year ago, the merger of the Jewish Federation and Jewish Community Foundation became official, and Jewish Long Beach was born. By any measure, 2019-2020 has been a remarkable year for our organization and for the Jewish communities of Long Beach and West Orange County.

Jewish Long Beach is now uniquely positioned to maximize the scale and scope of its impact. Our new Jewish Long Beach Impact Grants, funded in large part by the 2019 sale of Federation Tower, will more than double the amount of dollars we are able to grant annually to our beneficiary organizations. These grants are fueling collaborative programs that are building community and breaking down firewalls between agencies, organizations, and streams of Jewish observance.

Meanwhile, we have begun to establish the Jewish Long Beach narrative through the stories of those we serve and those who give, using a wide variety of media to communicate how your investment as a Jewish Long Beach donor directly impacts the community.

The capacity of Jewish Long Beach to serve its mission was put to the test sooner and in more dramatic fashion than most of us could have imagined. Through our COVID-19 Relief Fund established in March, hundreds of the most isolated and vulnerable members of our Jewish and broader communities received access to food and basic supplies, distance learning materials, counseling, and other critically important goods and services. Grants were awarded to all four of our partner agencies—the Alpert JCC, Hebrew Academy Orange County, Beach Hillel, and Jewish Family and Children’s Service of Long Beach and West Orange County—as well as to an unprecedented diversity of congregations and other organizations. These included Congregation Lubavitch Long Beach, Beth David, Chabad of Los Alamitos, food donations to frontline medical workers, and Degel Menashe, the nonprofit organization serving the B’nei Menashe Jews of Northeast India and Israel.

In the coming months, we will continue to develop tomorrow’s Jewish leaders through the Alpert New Leaders Forum and Lentzner Fellows programs. We will engage in collaborative programming with our partner agencies and other organizations locally, nationally, and across the Jewish world. We will recommit to leading the charge in developing the Long Beach area’s cultural and economic ties with Israel, and we will continue to invest in the future of our Jewish community’s gathering space, the Weinberg Jewish Long Beach Campus.

We are committed to earning your investment by cultivating a sense of pride and communal ownership of Jewish Long Beach, our mission, and our Jewish community. We are also committed to stewarding that investment and creating a lasting legacy for the future. We are so pleased to be part of your Jewish journey.



B' Shalom,



Laurie Raykoff
Laurie Raykoff
President



Zach Benjamin
Zach Benjamin
CEO

Jewish Long Beach ~ Our Impact

Fueling Jewish Communal Engagement and Growth

Nearly \$500,000 was granted to agencies, congregations, and organizations throughout Long Beach, West Orange County, and in Israel for collaborative programs designed to create opportunities for Jewish engagement and community building that would not be possible without our funding.



Serving the Needs of Our Most Vulnerable in the Wake of COVID-19

Nearly \$70,000 in Jewish Long Beach COVID-19 Relief Grants, serving the most vulnerable among us, were awarded to organizations across the spectrum of Jewish and general community orientation, including congregations representing all styles of Jewish observance, plus all five Jewish agencies, as well as to nonprofits serving frontline medical workers, vulnerable Israeli communities, and more.

Items funded include: gift cards for isolated seniors and families in need to purchase food, medication, and basic supplies; rent and utility assistance; distance learning tools and technologies for Jewish education institutions; and counseling services.



Developing Emerging Jewish Leaders

Alpert New Leaders Forum and the Lentzner Fellows Program

Founded in 2009 and 2016 respectively, Jewish Long Beach is investing in the Jewish future of our community through the Alpert New Leaders Forum and the Lentzner Fellows Program. More than 100 graduates of ANLF now serve on Jewish organization boards throughout Greater Long Beach and West Orange County. There are 14 Lentzner Fellows who have been mentored to serve effectively on the Board of Jewish Long Beach.

Stewarding the Jewish Community's Assets

Between the nearly \$30 million in philanthropic funds with which the community has entrusted us, and our ownership and management of the Harry and Jeanette Weinberg Jewish Long Beach Campus, our assets secure the future of Jewish life in Long Beach, West Orange County, and beyond.

Building Bridges Between Long Beach, West Orange County, and Israel

This year, we partnered with the Consulate of Israel in Los Angeles, Israel Bonds, and other organizations to educate the community on Israel's cultural, economic, and innovative impact, as well as to highlight ties between our community and Israel.



Jewish Long Beach ~ Our Impact

In the Words of Those We Serve

“I cannot express enough my appreciation for this gift and what it means for my family...It is a great relief that we will now be able to get the groceries we need to practice social distancing as strictly as possible.”

Jewish Long Beach COVID-19 Relief Fund aid recipient, Beth David

“You are the reason we are able to have a Passover. You have no idea how much you are helping us.”

Jewish Long Beach COVID-19 Relief Fund aid recipient, Chabad of Los Alamitos



“Your assistance helped us financially and picked up our spirit ...[With the help of Jewish Long Beach grant funds] we have distributed more than 40 laptops and tablets to families and educators so that students can access online learning and live instruction.”

Rabbi Yitzchok Newman, Dean, Hebrew Academy Orange County

“In the time of this pandemic nothing warms my heart more than knowing that our Jewish community is there for one another. When I received the gift from Jewish Long Beach it made my heart full. I hope that one day when I’m in the same situation I too can give and help another. I’m so blessed to be part of this beautiful Jewish community here in Long Beach.”

Jewish Long Beach COVID-19 Relief Fund aid recipient, Congregation Lubavitch

“Hi! I’m an ICU nurse working in the COVID unit at Long Beach Memorial Medical Center. I wanted to reach out because I just had your lasagna for lunch and it was amazing! I wanted to say thank you all so much! It means a lot to us when we can finally get out of the unit for a

delicious lunch. Thanks again! Stay safe!
Shelby Linthicum, RN, Long Beach Memorial

Women's Philanthropy			Men's Philanthropy		
Guardian Society minimum gift of \$1,000.	Pomegranate Society minimum gift of \$1,800.	Lion of Judah Society minimum gift of \$5,000.	Solomon Society minimum gift of \$1,000.	Shield of David Silver Society minimum gift of \$1,800.	Shield of David Gold Society minimum gift of \$5,000.
31 members	32 members	46 members	37 members	25 members	31 members

Jewish Long Beach ~ Your Donor Dollars at Work

2019-2020 Grants Awarded

Long Beach Hillel

Eva Cooper* Hillel Endowment\$	3,046.63
Eva Cooper* Hillel Program Endowment\$	19,592.04
Phil* and Gloria Furst Hillel Program Endowment\$	3,824.50
Jewish Long Beach Annual Fund Grant\$	7,316.52
Covid 19 Relief Grant\$	3,000.00

Jewish Federations of North America

Core Allocation for Israel and Overseas Jewry\$	90,313.00
Fair Share JFNA Dues\$	39,115.00

Alpert Jewish Community Center

Jewish Long Beach Annual Fund Grant\$	43,086.16
Covid 19 Relief Grant\$	14,978.00
Davis Senior Transportation Grant\$	3,738.45

Jewish Family and Children's Service

Jewish Long Beach Annual Fund Grant\$	19,510.71
Endowment Fund Program Grant\$	5,421.98
Covid 19 Relief Grant\$	4,000.00

Hebrew Academy Orange County

Jewish Long Beach Annual Fund Grant\$	11,381.25
Covid 19 Relief Grant\$	13,750.00

Jewish Public Affairs Committee

Jewish Long Beach Annual Fund Grant.....\$	750.00
--	--------

Anti-Defamation League

Jewish Long Beach Annual Fund Grant.....\$	750.00
--	--------

Birthright Israel

Jewish Long Beach Annual Fund Grant.....\$	1,000.00
--	----------

Israel Action Network

Jewish Long Beach Annual Fund Grant.....\$	500.00
--	--------

Jewish Long Beach (distributions from endowments)

Lion of Judah Endowments\$	8,598.87
Perpetual Annual Campaign Endowment\$	58,001.53
Annual Campaign Speakers Grant\$	1,478.68
Annual Endowment Grant\$	115,183.81

Beth David

Covid 19 Relief Grant.....\$	5,000.00
------------------------------	----------

Chabad of Los Alamitos & Cypress

Covid 19 Relief Grant.....\$	9,550.00
------------------------------	----------

Congregation Lubavitch

Covid 19 Relief Grant.....\$	3,000.00
------------------------------	----------

National Council for Jewish Women

Barbara Alpert NCJW Endowment.....\$	2,108.26
--------------------------------------	----------

Sharon-Carmel Hadassah

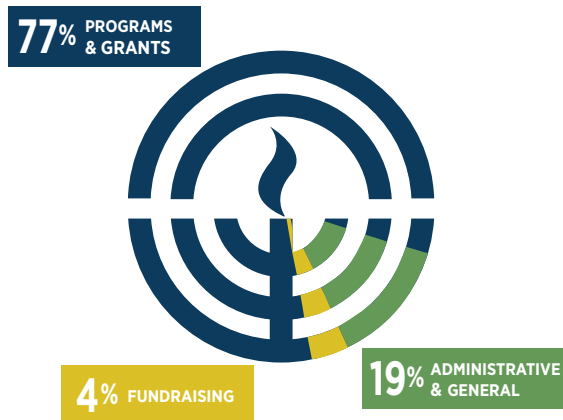
Barbara Alpert SCH Endowment.....\$	2,065.17
-------------------------------------	----------

Total Grants Awarded (as of 6/30/20)**\$490,060.56**

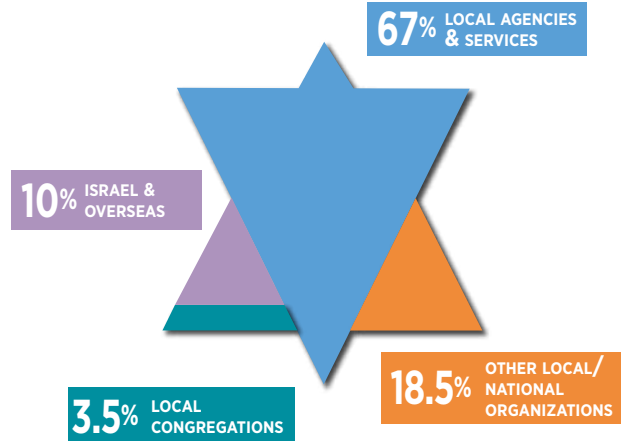


Jewish Long Beach ~ Our Financials

Efficient Use of Your Dollars



Organizations Benefitting from Grants



Support and Revenue

Contributions	\$	1,418,074
Investment Income (Loss)		(295,238)
Programs & Events		29,225
Jewish Community Chronicle		32,171
Other Income		<u>508,853</u>
Total Support & Revenue	\$	1,693,085

Expenses

Programs & Grants	\$	2,437,725
Administrative & General		605,041
Fundraising		<u>127,076</u>
Total Expenses	\$	3,169,842
Change in Net Assets	\$	(1,476,757)*

Statement of Financial Position 6/30/2020

ASSETS

Current Assets

Cash	\$	582,113
Investments		27,091,468
Receivables: Pledges		354,790
Other Receivables		28,921
Prepaid Expenses		<u>14,481</u>
Total Current Assets	\$	28,071,773

Non-Current Assets

Property & Equipment	\$	8,728,210
Life Insurance		355,599
Charitable Remainder Trust Asset		<u>1,098,299</u>
Total non-Current Assets	\$	10,182,108

Total Assets	\$	38,253,881
---------------------	-----------	-------------------

Liabilities & Net Assets

Accounts Payable & Accrued Liabilities	\$	303,891
Jewish Federation of North America		0
Grants Payable		239,404
Campus Lease Obligation		1,402,528
Funds of Other Organizations		1,888,803
Charitable Remainder Trust Liability		<u>1,098,299</u>
Total Liabilities	\$	4,932,925

Net Assets

Unrestricted Net Assets	\$	7,001,292
Temporarily Restricted Net Assets		18,848,589
Permanantly Restricted Net Assets		<u>7,471,075</u>
Total Net Assets	\$	33,320,956

Total Liabilities & Net Assets	\$	38,253,881
---	-----------	-------------------

Please note that due to the integration of the former Jewish Federation and Jewish Community Foundation on July 1, 2019, Jewish Long Beach has changed its reporting methodology to reflect how revenue is now recorded. We no longer count Weinberg Jewish Long Beach Campus maintenance funds or funds from campaign used for programming, fundraising, and general administration among our grants awarded to the community. They remain part of our organization's annual budget.

*Reduction in net assets is attributable to unrealized investment losses caused by market volatility in the wake of the COVID-19 crisis.

Jewish Long Beach 2019-20 Leadership & Staff

Board of Directors

Executive Committee/Officers

President	Laurie Raykoff
Immediate Past President	Jan Stein
VP Finance/Treasurer	Shari Nemirow
VP Governance	Edie Brodsky
VP Planning & Grants	Richard Marcus, PhD
VP Fund Development	Alan Brawer
VP Investments	Rosecarrie Brooks
Secretary	Aaron Kern, MD
Community Development Chair	Matt Paretsky
At-Large	Melissa Carr-Kreitenberg
Presidential Appointment	Judi Lentzner

Members

Barbara Alpert *
 Mel Berger
 Jeb Brilliant
 Charles Brodsky
 Shelley Carl
 Karen Codman
 Alicia Friedmann
 Alan Jarrick
 Don Kaiser
 Lynne Kass
 Rabbi Howard Laibson
 Larry Nemirow
 Helen Rosenberg
 Sherri Selmanson
 Leonard Simon
 Rachel Tichauer



Past Presidents

Jim Breslauer	Lea Gerber	Hank Feldman	Rick Freeman
Gene Lentzner*	Gordon Lentzner	Judith Lentzner	Rich Lipeles
Shari Nemirow	Shirley Ross		

Staff

Chief Executive Officer	Zachary Benjamin
Chief Financial Officer	Ray Brown
Director of Community Development	Sharon Kenigsberg
Manager of Marketing & Outreach	Melanie Edwards
Office Manager/Executive Assistant	Yolanda Placencio
Campus Manager	Pedro Cebrero
Development/Editorial Coordinator	Carol A. Beckerman
Bookkeeper	Audrey Phan
Accounting Assistant	Paul Anaya
Communication Intern	David Rowe



Weinberg Jewish Long Beach Campus
 3801 East Willow Street • Long Beach, CA 90815 • 562.424.7601

www.jewishlongbeach.org