

## FUNDING JEWISH EDUCATION

A contemporary Talmudic scholar has said that “a Jew is not someone whose grandparents are Jewish but someone who wants his or her grandchildren to be Jewish.” Effective Jewish education is the single best vehicle to ensure Jewish continuity according to a number of recent population and demographic studies.

“We are beyond fortunate to have B’nai Shalom in our small but mighty Jewish community,” notes Ellen Fischer, former faculty member and parent of an alum.

B’nai Shalom Board member, Linda Shapiro points to the fact that the school “instills pride in each child being Jewish. Upon graduation, they are poised and prepared, and perhaps the best part is the Jewish friendships that will last a lifetime.”

However, B’nai Shalom, like so many day schools throughout the country, faces a number of challenges, including added expenses of maintaining its excellent dual curriculum, longer school day, larger faculty, ever-increasing security — and, now, health-related expenses — just to name a few.

It is equally troubling to note that many studies have also concluded that ever-increasing day school tuition is not sustainable. This raises real questions as to whether

young families in today’s Jewish community will be able to afford the rising cost of Jewish education.

The Jewish Foundation of Greensboro remains committed to doing its part to ensure that B’nai Shalom remains the jewel within our community that it has been for 50 years. Numerous individuals and

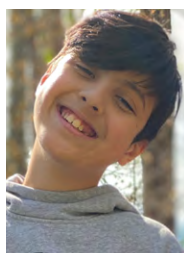
families are stepping up to help the school achieve its ambitious 50th anniversary fundraising and endowment building goals.

As B’nai Shalom Board member, Peggy Bernstein, puts it, “It is incumbent upon all of us to ensure that Jewish life continues to thrive. There is no better way to do that than through educating our children and there is no better place than B’nai Shalom.”

“It is incumbent upon all of us to ensure that Jewish life continues to thrive.”

For more information on ways the Foundation can help support B’nai Shalom, please contact Susan Gutterman, JD at [SGutterman@JewishfoundationNC.org](mailto:SGutterman@JewishfoundationNC.org) or (336) 852-0099.

## The Lawrence M. Cohen Scholars



Gabriel Singerman

The Lawrence M. Cohen Endowment Fund and the Greensboro Jewish Foundation are proud to announce **Gabriel Singerman** and **Addie Dunno** as the **2020-2021 Lawrence M. Cohen Scholars**.

Addie and Gabriel are model B’nai Shalom Day School students. Always kind to fellow classmates and teachers, Addie, 5th grade, is a good friend, student and an athlete. Sweet and intuitive, Gabriel, 7th grade, never fails to add a friendly disposition to his classroom.



Addie Dunno

The scholarships honor the memory of Lawrence M. Cohen, z”l, a beloved leader in the Greensboro Jewish community, who considered education, Israel and the welfare of the Jewish people his personal priorities. His generous gift endows the survival of Jewish heritage and religion by supporting Jewish education.



## DONOR ADVISED FUNDS

### For Your Children and Grandchildren

Did you know that you can...

- Open a Donor Advised Fund for someone under the age of 40 for just \$2,500
- Engage multiple generations in philanthropy and decision making
- Assist your family in designating favorite charities
- Engage younger generations in exploring their philanthropic interests
- Craft a philanthropic succession plan designating your children or grandchildren, or your favorite charities, or a combination of both

For more information on Donor Advised Funds, please contact Susan Gutterman, JD at [SGutterman@JewishfoundationNC.org](mailto:SGutterman@JewishfoundationNC.org) or (336) 852-0099.