

JEWISH COMMUNITY CENTRE

The JCC will inspire a future rooted in our Jewish values, culture, and traditions. It will be a hub for Jewish life and a primary destination for Jewish engagement, welcoming people of all ages and backgrounds to connect, learn, and grow together.

FREQUENTLY ASKED QUESTIONS

Why do we need a JCC?

Welcome to our community living room! The JCC will be a primary destination for Jewish engagement, a centre of learning and celebration, and a connector to Jewish life. As a secular Jewish space, the new JCC will bring new opportunities to foster connections and belonging, while meeting the needs of our community for years to come.

Does the community want this?

The short answer is yes. We know this from extensive community consultations, surveys, and focus groups, followed by a community meeting and a vote that was overwhelmingly in favour of the project. The design was also shaped by the results of the consultation process.

Can we afford a JCC?

The long-term financial health of the JCC is a top priority. The building has been purchased with proceeds from the sale of the old JCC and is mortgage-free. We have also received a \$1 million grant from the Government of Alberta. Our next step is to establish an endowment fund to offset the JCC's operating costs in perpetuity. There are naming opportunities for anyone to contribute to the endowment fund. Please contact Stacey Leavitt-Wright at ceo@edjfed.org or Becky Saegert at bsaegert@edjfed.org for more information.

Will people stop going to other institutions?

The JCC may be someone's Jewish home or one of many Jewish institutions that engages them. Often, a JCC is the catalyst for exploring other Jewish institutions.



What are the key features of the JCC?

At approximately 19,500 ft², there will be a social hall for simchas, Jewish arts and cultural events, and community celebrations, as well as a teen lounge, a family play area, comfortable space to relax and enjoy a nosh, and multipurpose rooms. The JCC will also be home to Jewish non-for-profits, including Jewish Federation, Temple Beth Ora, and the Jewish Archives and Historical Society of Edmonton and Northern Alberta.

What security features will be included?

We take community security very seriously. The JCC will include modern surveillance, controlled access points, and emergency preparedness plans. We are being advised by our Jewish community security network partners across the country and implementing established best practices.

Will there be a full kitchen?

The current plans allow for space for a cafe/serving space, which can be upgraded to a full kitchen. This upgrade is dependent on securing sufficient philanthropic support.

Will there be a Holocaust education centre?

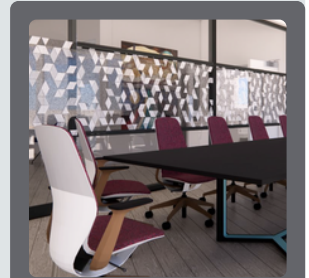
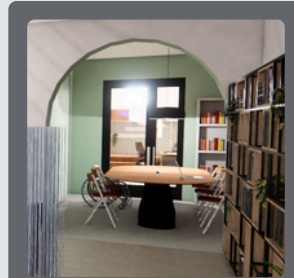
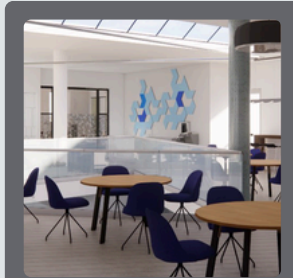
The design allows for the addition of a Jewish Heritage and Holocaust Education Centre, which will be developed once grants and philanthropic support is secured.

Where is the JCC located and when will it open?

The building located at 14205-109 Avenue. The location was chosen for its accessibility and centrality to where the census indicated the Jewish population lives. The JCC is tentatively scheduled to open in fall 2026.

Is the building environmentally friendly?

The building will include energy-efficient systems, sustainable materials, and green space integration.



L-R: Rooftop Patio, Teen Lounge, Main Floor, Concourse, Multipurpose Room. Reverse L-R: Main Entrance, Social Hall. Renderings are conceptual only.