

# Aging and Trauma

## What is Trauma?

Individual trauma is a result of an event, series of events, or set of circumstances that can be sudden or drawn out, which present physical or emotional harm to an individual, or are life threatening. Traumatic events may have lasting adverse effects on an individual's functioning and mental, physical, social, emotional, and spiritual wellbeing.<sup>1</sup>

90%

of adults in the United States have been exposed to a least one traumatic event in their lifetimes. Exposure to multiple traumatic events throughout an individual's lifetime is common.<sup>2</sup>

## What is Posttraumatic Stress Disorder?

Posttraumatic Stress Disorder is a mental health condition that may develop after experiencing or witnessing a traumatic event resulting in heightened and prolonged stress response.<sup>3</sup>

8,000,000

adults in the United States experience Posttraumatic Stress Disorder (PTSD) each year, equivalent to the population of the state of Virginia.<sup>4,5</sup>

## Trauma in Older Adults

Trauma does not discriminate based on age – trauma can occur to individuals of all ages and can impact individuals throughout their lifetime. Symptoms associated with traumatic stress may not dissipate over time for all survivors. As trauma survivors age, their trauma symptoms can resurface and evolve.<sup>6,7,8</sup>

- Symptoms of trauma can evolve after long symptom-free periods
- Reemergence of trauma symptoms after symptom-free periods is not uncommon
- Symptoms of trauma can emerge for the first time during older adulthood - decades after exposure to traumatic events
- Symptoms of trauma emerging in older adulthood can be more extreme than previously experienced

One study found that male survivors of childhood sexual abuse experienced higher levels of depressive symptoms in their fifties, sixties, and seventies compared to men without that history.<sup>9</sup>

One study found that female survivors of physical or sexual assault earlier in life report continued and significant levels of PTSD well into older adulthood.<sup>10</sup>

## Trauma Resurgence in Older Adults

Traumatic stress symptoms can persist and reemerge in older adulthood as this is a phase of social, financial, and physical change. These changes can trigger a traumatic stress response even for those who had previously been coping well.<sup>11,12,13</sup> As trauma survivors age, their trauma symptoms can resurface and evolve as a result of major life changes such as,

change in  
familial roles

beginning of  
retirement

emergence of  
health problems

loss of  
independence

loss of  
loved ones

Coping mechanisms previously used to deal with trauma triggers or symptoms may no longer be available or possible. These coping mechanisms include socialization with professional networks and physical activities such as exercise.



# Aging and Trauma

## Trauma and Health are Linked

An individual's trauma exposure is linked to their propensity for developing a wide range of conditions that can negatively impact their health. Older adult trauma survivors are especially vulnerable as their trauma history can result in high rates of physical, mental, and cognitive decline.

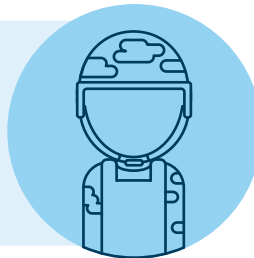
## Trauma and Brain Health

Traumatic events can affect various areas of the brain and can lead to lasting changes in neurological response resulting in persistent traumatic stress symptoms. These symptoms can include constant fear, hypervigilance, and difficulties sleeping, concentrating, thinking clearly, and regulating emotions.<sup>23</sup>

## Trauma and Dementia

Traumatic events are associated with an increased likelihood of trauma survivors to develop dementia in older adulthood. Additionally, older adults with a history of trauma may experience worsening of trauma symptoms with the onset of dementia.<sup>24, 25, 26</sup>

**2X** Veterans with PTSD are twice as likely to develop dementia in older adulthood compared to veterans without PTSD.<sup>27</sup>



Trauma is associated with the following health conditions:<sup>14, 15, 16, 17, 18, 19, 20, 21, 22</sup>

### Physical Health



- Lung disease
- Gum disease
- Fibromyalgia
- Chronic fatigue
- Cardiovascular disease
- Gastrointestinal disorders
- Endocrine disorders
- Reproductive disorders

### Mental Health



- Anxiety
- Depression
- Suicidal Ideation
- Mood Disorders
- Eating disorders
- Substance abuse

### Cognitive Health



- Dementia
- Sleep Disorders
- Cognitive Impairments

## The Difficulty of Uncovering Trauma History in Older Adults

Older adult survivors of trauma may have trouble seeking help with trauma symptoms or associated health consequences because,<sup>28, 29, 30, 31</sup>

- Older adults may not see the role of trauma in their health
- Older adults may fear the stigma associated with their trauma history
- Healthcare providers may not recognize the signs or symptoms of trauma in older adults
- Healthcare providers may not know how to provide treatment for trauma symptoms
- Trauma symptoms in older adults can present differently than in younger individuals or be masked by other health conditions
- Trauma survivors have limited access to person-centered, trauma-informed care.



### Seeking Help Can Retraumatize

Older adults with a history of trauma are often misdiagnosed and receive inappropriate treatment

Providing medical history and revealing trauma histories may retraumatize survivors

Residents of long-term care facilities may be retraumatized by the way in which they are treated



## Sources

### Want to know more?

Visit our website  
[AgingAndTrauma.org](https://www.AgingAndTrauma.org)

Email us  
[Aging@JFNA.org](mailto:Aging@JFNA.org)

1. Substance Abuse and Mental Health Services Administration (2014) SAMHSA's Concept of Trauma and Guidance for a Trauma-Informed Approach. HHS Publication No. (SMA) 14-4884. [https://ncsacw.samhsa.gov/userfiles/files/SAMHSA\\_Trauma.pdf](https://ncsacw.samhsa.gov/userfiles/files/SAMHSA_Trauma.pdf)
2. Kilpatrick, D. G., Resnick, H. S., Milanak, M. E., Miller, M. W., Keyes, K. M., & Friedman, M. J. (2013). National estimates of exposure to traumatic events and PTSD prevalence using DSM-IV and DSM-5 criteria. *Journal of Traumatic Stress, 26*(5), 537-547. <https://doi.org/10.1002/jts.21848>
3. U.S. Department of Veterans Affairs, National Center for PTSD. PTSD Basics. [https://www.ptsd.va.gov/understand/what/ptsd\\_basics.asp](https://www.ptsd.va.gov/understand/what/ptsd_basics.asp)
4. U.S. Department of Veterans Affairs, National Center for PTSD. How Common is PTSD in Adults? [https://www.ptsd.va.gov/understand/common/common\\_adults.asp](https://www.ptsd.va.gov/understand/common/common_adults.asp)
5. United States Census Bureau (2019). State Population Totals and Components of Change: 2010-2019. [https://www.census.gov/data/tables/time-series/demo/popest/2010s-state-total.html#par\\_textimage\\_1574439295](https://www.census.gov/data/tables/time-series/demo/popest/2010s-state-total.html#par_textimage_1574439295)
6. Barman, R., Detweiler, M. B., & Kim, K. Y. (2016). PTSD in Combat Veterans With Cognitive Decline. *Federal practitioner: for the health care professionals of the VA, DoD, and PHS, 33*(Suppl 2), 17S-21S.
7. Chopra, M.P. (2018, March 30). PTSD in Late Life: Special Issues. *Psychiatric Times, 32*, 1-9. <https://www.psychiatric-times.com/view/ptsd-late-life-special-issues>
8. Oyelakin A., Maksymenko A., Jegede O., Olupona T., Germain W., Yu W., & Jolayemi A. (2018). An atypical presentation of trauma-related disorder in geriatric patients. *Journal of Traumatic Stress Disorders and Treatment, 7*(1). <https://doi.org/10.4172/2324-8947.1000185>
9. Easton, S. D., Kong, J., Gregas, M. C., Shen, C., & Shafer, K. (2019). Child Sexual Abuse and Depression in Late Life for Men: A Population-Based, Longitudinal Analysis. *The journals of gerontology. Series B, Psychological sciences and social sciences, 74*(5), 842-852. <https://doi.org/10.1093/geronb/gbx114>
10. Cook, J. M., Dinnen, S., & O'Donnell, C. (2011). Older women survivors of physical and sexual violence: a systematic review of the quantitative literature. *Journal of women's health (2002), 20*(7), 1075-1081. <https://doi.org/10.1089/jwh.2010.2279>
11. Davison, E. H., Kaiser, A. P., Spiro, A., 3rd, Moye, J., King, L. A., & King, D. W. (2016). From Late-Onset Stress Symptomatology to Later-Adulthood Trauma Reengagement in Aging Combat Veterans: Taking a Broader View. *The Gerontologist, 56*(1), 14-21. <https://doi.org/10.1093/geront/gnv097>
12. Ladson, D., & Bienenfeld, D. (2007). Delayed reaction to trauma in an aging woman. *Psychiatry (Edgmont), 4*(6), 46-50. <https://www.ncbi.nlm.nih.gov/pmc/articles/PMC2921251/>
13. Paratz, E.D., & Katz, B. (2011). Ageing Holocaust survivors in Australia. *The Medical Journal of Australia, 194*(4), 194-197. <https://doi.org/10.5694/j.1326-5377.2011.tb03771.x>
14. D'Andrea, W., Sharma, R., Zelechowski, A. D., & Spinazzola, J. (2011). Physical health problems after single trauma exposure: when stress takes root in the body. *Journal of the American Psychiatric Nurses Association, 17*(6), 378-392. <https://doi.org/10.1177/1078390311425187>
15. de Oliveira Solis, A. C., Araújo, Á. C., Corchs, F., Bernik, M., Duran, É. P., Silva, C., & Lotufo-Neto, F. (2017). Impact of post-traumatic stress disorder on oral health. *Journal of affective disorders, 219*, 126-132. <https://doi.org/10.1016/j.jad.2017.05.033>
16. Jankowski, K. (2016). PTSD and Physical Health. U.S. Department of Veterans Affairs, National Center for PTSD. [https://www.ptsd.va.gov/professional/treat/cooccurring/ptsd\\_physical\\_health.asp](https://www.ptsd.va.gov/professional/treat/cooccurring/ptsd_physical_health.asp)
17. Kelsch, N., & Kelsch, M. (2014). Identifying and Treating Patients with PTSD. *Dental Learning*. [https://www.dentallearning.net/files/PTSD\\_Web\\_CE\\_Bookmark.pdf](https://www.dentallearning.net/files/PTSD_Web_CE_Bookmark.pdf)



## Sources

18. McFarlane A. C. (2010). The long-term costs of traumatic stress: intertwined physical and psychological consequences. *World psychiatry: official journal of the World Psychiatric Association (WPA)*, 9(1), 3-10. <https://doi.org/10.1002/j.2051-5545.2010.tb00254.x>
19. Mohlenhoff, B. S., O'Donovan, A., Weiner, M. W., & Neylan, T. C. (2017). Dementia Risk in Posttraumatic Stress Disorder: the Relevance of Sleep-Related Abnormalities in Brain Structure, Amyloid, and Inflammation. *Current Psychiatry Reports*, 19(11), 89. <https://doi.org/10.1007/s11920-017-0835-1>
20. Rouxel, P., Heilmann, A., Demakakos, P., Aida, J., Tsakos, G., & Watt, R. G. (2016). Oral health-related quality of life and loneliness among older adults. *European Journal of Ageing*, 14(2), 101-109. <https://doi.org/10.1007/s10433-016-0392-1>
21. Wyatt, G. E., Myers, H. F., Williams, J. K., Kitchen, C. R., Loeb, T., Carmona, J. V., Wyatt, L. E., Chin, D., & Presley, N. (2002). Does a history of trauma contribute to HIV risk for women of color? Implications for prevention and policy. *American journal of public health*, 92(4), 660-665. <https://doi.org/10.2105/ajph.92.4.660>
22. Yaffee, K., Vittinghoff, E., Lindquist, K., Barnes, D., Covinsky, K. E., Neylan, T., Kluse, M., & Marmar, C. (2010). Posttraumatic stress disorder and risk of dementia among US veterans. *Archives of general psychiatry*, 67(6), 608-613. <https://doi.org/10.1001/archgenpsychiatry.2010.61>
23. Sweeton, J. (2017, March 13). How to heal the traumatized brain. *Psychology Today*. <https://www.psychologytoday.com/us/blog/workings-well-being/201703/how-heal-the-traumatized-brain>
24. Mittal, D., Torres, R., Abashidze, A., & Jimerson, N. (2001). Worsening of Post-Traumatic Stress Disorder Symptoms with Cognitive Decline: Case Series. *Journal of Geriatric Psychiatry and Neurology*, 14(1), 17-20. <https://doi.org/10.1177/089198870101400105>
25. van Achterberg, M. E., Rohrbaugh, R. M., & Southwick, S. M. (2001). Emergence of PTSD in trauma survivors with dementia. *The Journal of Clinical Psychiatry*, 62(3), 206-207. <https://doi.org/10.4088/jcp.v62n0312c>
26. Mohlenhoff, B. S., O'Donovan, A., Weiner, M. W., & Neylan, T. C. (2017). Dementia Risk in Posttraumatic Stress Disorder: the Relevance of Sleep-Related Abnormalities in Brain Structure, Amyloid, and Inflammation. *Current Psychiatry Reports*, 19(11), 89. <https://doi.org/10.1007/s11920-017-0835-1>
27. Yaffee, K., Vittinghoff, E., Lindquist, K., Barnes, D., Covinsky, K. E., Neylan, T., Kluse, M., & Marmar, C. (2010). Posttraumatic stress disorder and risk of dementia among US veterans. *Archives of general psychiatry*, 67(6), 608-613. <https://doi.org/10.1001/archgenpsychiatry.2010.61>
28. Chopra, M.P. (2018, March 30). PTSD in Late Life: Special Issues. *Psychiatric Times*, 32, 1-9. <https://www.psychiatric-times.com/view/ptsd-late-life-special-issues>
29. McCarthy, E., & Cook, J. (2018, August 30). PTSD in late life. *Psychiatric Times*, 35. <https://www.psychiatric-times.com/view/ptsd-late-life>
30. Ladson, D., & Bienenfeld, D. (2007). Delayed reaction to trauma in an aging woman. *Psychiatry (Edgmont)*, 4(6), 46-50. <https://www.ncbi.nlm.nih.gov/pmc/articles/PMC2921251/>
31. Key, K.H. (2018). Foundations of trauma-informed care: An introductory primer. *LeadingAge Maryland*. [https://www.leadingage.org/sites/default/files/RFA%20Primer%20\\_%20RGB.pdf](https://www.leadingage.org/sites/default/files/RFA%20Primer%20_%20RGB.pdf)

