

Columbia Jewish News

Issue 4 | Volume XLI | July & August 2016

**Columbia
Jewish Heritage
Initiative
Launches its
Interactive
Online Tour!**
see page 8

photo courtesy of Historic Columbia

**CHEC
Spring
Highlights**
see pages 12-13

**JFS Thanks
You for Your
Generosity**
see page 6

Columbia Jewish Federation
306 Flora Drive
Columbia, SC 29223
RETURN SERVICE REQUESTED

Non Profit Org
US Postage
PAID
Columbia, SC
Permit No. 48



JUNE 6 – AUGUST 12
AGES 2.5 – RISING 9TH GRADE

“A fun, nurturing, and creative environment where children’s spirits will soar, and lasting summer friendships and memories will flourish.”

REGISTER TODAY!

Registration and information online at jcccolumbia.org/camp-gesher or contact Camp Registrar, Claire Becraft 803.787.2023 ext. 215.

**Building Bridges through
 Values and Leadership**

For more information concerning your child’s camp experience, contact Risa Strauss, Camp Director at 803.787.2023 ext. 210.





Our Trenholm Road Chapel is now open and convenient to Columbia's synagogues, offering amenities designed to meet your needs.
7600 Trenholm Road Ext.

SHIVES
FUNERAL HOME

FAMILY OWNED & OPERATED | EST. 1932
803.754.6290 | SHIVESFUNERALHOME.COM

EXPERIENCE THE ADVANTAGE OF A FAMILY OWNED FUNERAL HOME.

Coming to Your JCC Paddleboard Yoga



Try the newest phenomena in yoga this summer, right here at your JCC!

Monday, August 15th
10:00 am & 11:00 am



Classes are limited to the first 16 who register - 8 in each class.

Call 787-2023 to register today!

Registration & payment required.

\$35 JCC member / \$45 community member

Paddleboard rental included.



Survival swim lessons for 6 months to 6 years

- Proven method takes weeks, not years!
- Certified swim instructors
- Private swim lessons only

Swim for life, not just summer!

Contact us today!

Shannon O'Lear
770.710.7424

 littleloggerheads@hotmail.com

 www.infantaquatics.com/shannon.htm

 *Like* us: LittleLoggerheadsSwimSchool





"As we move forward we will continue to create more opportunities to partner and collaborate with all of our institutions and with all of you, to sustain our vibrant Jewish community today, and build upon our partnerships for an even better tomorrow."

Building a Collaborative Community

*Barry Abels,
CJF and JCC Executive Director*

As is often the case in smaller communities, the positive impact that our Jewish community has on the broader population is bigger than our size. Whether it's in the realm of philanthropy, politics, business impact, or social prominence, we are involved, often at the forefront. Our social service organizations are better for it, our symphony orchestras and community theaters are better for it, our region of the state is better for it. Combined with others from the broader community, we help strengthen our community.

Within our Jewish community we are fortunate that we and our prior generations established and now sustain six communal institutions. Tree of Life Congregation and Beth Shalom Synagogue both have a long and rich history in the religious lives of our members. Chabad Aleph plays an important role as a congregation, and their involvement in establishing the Cutler Jewish Day School provided an educational option that also benefits our broader community. The cross-over benefit can also be said for the JCC where culture, athletics, and education all combine for the benefit of our Jewish community and many others. Our Columbia Jewish Federation also enjoys a rich role: raising funds and allocating them to our organizations, as well as needs in Israel; providing programing; caring for people through Jewish Family Service; and engaging in interfaith activities and community issues through the Community Relations Council.

One thing is unique to Federation within this mix of organizations: We help fund activities at all the other institutions, and we often provide support and help staff events and functions as one way to share resources and collaborate in a variety of activities. Earlier this year we partnered with Beth Shalom and Tree of Life to bring the comedy of Joel Chasnoff and the music of Dan Nichols to Columbia. Along with the JCC, we co-sponsored Avi Gold as a scholar in residence with Beth Shalom, the Maccabeats concert and Mega Challah Bake with Chabad, the All Mighty Baroque concert with the Palmetto Chamber Orchestra; and there are several programs where we will be partnering with our congregations in the fall. Federation, through our community grants, has also funded a number of lectures and musical programs presented by our congregations and others. One of the best examples of community collaboration has resulted in the Columbia Jewish Heritage Initiative, in

partnership with Historic Columbia, Central Carolina Community Foundation, the City of Columbia, and SC Humanities.



By partnering with all of our community institutions, not only do we extend resources, but also we strengthen each other and build our community. These days, when there is competition for resources, an uncertain political climate, and acts of terrorism abroad and at home, it is critical for all of us to support our community, share what we have, and gain strength from each other. That is how we fulfill our mission – **to further the welfare of the Columbia Jewish Community.** We fundraise and fund; we coordinate; we partner and collaborate; we work behind the scenes and at center stage; we work for the benefit of all within our Jewish community, and at times beyond. As we move forward we will continue to create more opportunities to partner and collaborate with all of our institutions and with all of you, to sustain our vibrant Jewish community today, and build upon our partnerships for an even better tomorrow.

Please consider a membership in your Katie and Irwin Kahn Jewish Community Center. A Culture Club membership provides access to all of our educational, musical, and other cultural programs and activities. Our general membership provides all of that access, plus the use of our pool and all fitness facilities. Current members, don't forget to take advantage of our new "refer three and get one free" opportunity. Help a friend join the JCC and earn JCC bucks and free months. Call Gerri Lynn Miller or our Welcome Desk at 803-787-2023 for more details today! See page 7 for more details.

A Legacy that Keeps on Giving

How the Rosen Family's concerns for Judaism on Campus will provide perpetual support for Hillel at USC

The USC campus is very familiar to members of the Rosen Family. Joe Rosen and his sister, Bonnie Rosen Nurick, both graduated from USC. Their cousin, Janet Brownstein, also attended USC for a time. Hillel was active on campus, but on a shoe string budget. During the 1970s, to help Hillel financially, Harvey Rosen (Joe and Bonnie's father) and Betty Jean Brownstein (Harvey's sister and Janet's mother) donated some real estate to Hillel which, when sold, would provide income for programs.

Over the next almost 40 years Betty Jean and Marvin Brownstein, Harvey Rosen, Joe Rosen, and Bonnie and Arnold Nurick gave properties to Hillel. During that time, a separate non-profit entity was created, and Judaism on Campus (JOC) was born. The JOC board, made up of Janet Brownstein, Bonnie and Arnold Nurick, Harvey Rosen, and Joe Rosen managed and sold a number of properties. Two more sold within the last two years, although after the crash in 2008-09, sales slowed.

Recently, the Rosens turned the JOC over to the Columbia Jewish Federation to oversee, and Joshua McDuffie, David Lovit, and Federation Director Barry Abels are overseeing the properties and actively seeking buyers to turn these commercial tracts into funds for Hillel. JOC currently holds 15 properties. Income from prior sales have been used to fund various activities, and as these properties sell, an endowment will be established to provide funds for Hillel into the future.

Many thanks go to all the members of the Rosen family for their caring and forethought to create Judaism on Campus and establish something to benefit Jewish life on the USC campus for years to come.

Don't Skip Out on your SKIP Funds!

Several years ago, many of you participated in the Federation SKIP fund. Standing for Send Your Kids to Israel Program, parents provided funds to the Federation to be used for sending their teens on trips and missions to Israel. The Federation and their congregation matched the funds, and that produced a nice nest egg to pay for the experience.

Many of our young people took advantage of the program and had the experience of a lifetime. Not everyone was able to use the funds, and eventually, due to the free Birthright program and for other reasons, the program was discontinued, and unused funds were returned to families and the congregations who matched.

Although most of the remaining funds consist of the Federation matching contributions, we want to ensure that anyone who has left contributions in the fund has done so intentionally.

Soon we will close the account and mix those monies into our endowment to help fund future allocations to the local and overseas programs we support.

However, if you invested funds for an Israel trip and did not use them or request a return as we discontinued the program, **contact us this month** so we can review your account.

Thank you,
The Board and Staff of the Columbia Jewish Federation

The *Columbia Jewish News* is a bi-monthly publication of the Columbia Jewish Federation.



Columbia Jewish Federation

306 Flora Drive

Columbia, SC 29223

t (803) 787-2023 | f (803) 462-1337

www.jewishcolumbia.org

Columbia Jewish Federation Staff

Barry Abels, *Executive Director*

barrya@jewishcolumbia.org, ext. 207

Elaine Cohen, *Jewish Family Service Director*

jfs@jewishcolumbia.org, ext. 220

Cheryl Nail, *Community Relations Director*

cheryl@jewishcolumbia.org, ext. 211

Debby Mullen, *Executive Assistant*

debbym@jccolumbia.org, ext. 202

Columbia Jewish Federation Executive Committee

David Lovit, *President*

Joshua McDuffie, *Vice President*

Fred Seidenberg, *Secretary*

Meridith Goldstein, *Treasurer*

Dr. Naomi Farber, *Immediate Past President*

Columbia Jewish News Editorial Staff

Cheryl Nail, *Managing Editor*

Shelley Kriegshaber, *Editor*

Laurie Slack, *Designer & Photographer*

Production Services by Florida Sun Printing

July/August 2016, Volume 41, Issue 4

Contributing Writers

Barry Abels, Laney Cohen, Nard Fleischman,

Lyssa Harvey, Minda Miller, Rabbi Eric Mollo,

Rabbi Meir Muller, Robin Waites

The views and opinions expressed in the *Columbia Jewish News* are those of the authors and do not necessarily reflect endorsement by the Columbia Jewish Federation or the editorial staff of this publication.

We welcome all voices from our community. If you would like to contribute an article, life cycle announcement, photos, or advertising, visit www.jewishcolumbia.org/cjn for submission guidelines and advertising rates.



***"Thanks to
your generous
donations to the
Central Carolina
Foundation on
June 3rd, JFS
yielded over
\$1,100!"***

Thank You!

Laney Cohen, LMSW, JFS Director

Thank you, thank you, thank you! This is what I want to say for our first foray into Midlands Gives. Thanks to your generous donations to the Central Carolina Community Foundation on June 3rd, JFS yielded over \$1,100! This is money that will go towards helping community members to pay rent, utilities, and any other emergency needs that there may be.

I also want to say todah rabba to Issac Dubinsky and the Dubinsky family: Issac donated all of his Bar Mitzvah gifts to the Jewish Food Pantry. What a wonderful mitzvah on behalf of his simcha! Thanks to him, our shelves are stocked with non-perishables to be given out when families are in need.

For those in need of perishables we have the Food Share program. Food Share is offered for \$20, or \$10 on a SNAP (Supplemental Nutrition Assistance Program) card, every two weeks. The large box of fruits and veggies differs every week, according to what can be found at the SC Farmers Market.

The JCC is also home to the Community Garden. JFS is happy to announce that a generous grant has been awarded from BJH Foundation for the continuation and expansion of the garden. We are currently looking into installing a bench and a walkway to make the garden more accessible to everyone so that all may enjoy! Veggie and fruit beds are for the entire community. For a fee of \$40, one can enjoy a bed to grow what they want - all that is asked in return is that a portion is donated to the Jewish Food Pantry to ensure fresh fruits and veggies to those in need. So far this year, we have harvested peas, peppers, tomatoes, strawberries, and we are waiting on squash!



Jewish Family Service is also extremely proud to announce another year of funding for the Senior Transportation Network. This program, too, has been awarded a grant, thanks to the generosity of BJH Foundation. Please remind those Jewish Seniors in need of transportation services that they can purchase \$50 of rides on Senior Express of the Midlands for only \$5.

For more information on Food Share, the Community Garden, and/or Senior Transportation, please contact Laney at 787-2023 ext 220.

JCC Welcomes New Member Services Manager



Gerri Lynn Miller, a Columbia Jewish Community member for the last 15 years, is excited to join the Katie & Irwin Kahn JCC dream team as their new Member Services Manager. You might have seen Gerri Lynn, a single mom of two boys, at a multitude of events, as she is no stranger to all that the JCC and Columbia Jewish Community have to offer. She is excited to use her skills and passion to assist our team in continuing to grow the JCC.

When she's not working, you might find Gerri Lynn schlepping all over the state to cheer on her boys playing baseball. On the rare occasion that she's not on the bleachers, Gerri Lynn is probably doing laundry, hiking to waterfalls, working in her yard, or having fun on or in the water.

The next time you're at the JCC, come by and say hello. She looks forward to catching up with old friends and making new ones, too.

Gerri Lynn can be reached at gerrilynnm@jcccolumbia.org or 787-2023 x. 206 (or at the ballfield).



BETTER TOGETHER

Announcing our new and improved
MEMBERSHIP REFERRAL REWARDS PROGRAM.

You Belong Here... and so do your friends!

When you refer a friend to the JCC and they join,
you get \$50 JCC Bucks and your friend gets \$25 JCC Bucks.

The 3rd time's a charm...
When you refer 3,
get a month FREE!

BOUNUS! The member who has referred the most new members in 4 months will get a prize!

JCC Bucks can be used towards JCC programs, services and goods, such as personal training, massage therapy, swimming lessons, Summer Camp, JCC merchandise, and more!

Sign up your friends at the
JCC Welcome Desk!

JCC
You belong here.

KATIE & IRWIN KAHN JCC

LUCK
of the
DRAW

JCC
You belong here.

LABOR DAY RAFFLE

BACK
by popular
DEMAND

Labor Day: September 5, 2016

GRAND PRIZE \$10,000!

Get your ticket today!

Raffle Ticket: \$100

See any JCC Board Member or the JCC Welcome Desk to purchase.



Columbia Jewish Heritage Initiative: Interactive Web Tour Now Available

Robin Waites, Executive Director, Historic Columbia

Historic Columbia is excited to announce the June launch of Columbia's Jewish Heritage, an interactive web-based tour showcasing two hundred years of Jewish contributions to the capital city. Created as part of the Columbia Jewish Heritage Initiative, a project funded in part through generous grants from the Central Carolina Community Foundation, SC Humanities, and the City of Columbia, the online tour builds upon the 34 historic sites found in the print brochure by the same name.

Visit historiccolumbia.org/cjhi to experience the tour.

Phase one of the online version covers an expanded geographical area, including Columbia suburbs, and contains additional images, audio, and video files. The website will continue to be an open project, which means we are interested in adding stories, sites, images, and interviews over the course of the coming months and years. Contact us at 803.252.7742 x. 14 or rwaites@historiccolumbia.org if you have more to share.

Want to keep up with the project on a more regular basis? Like us on Facebook (Columbia Jewish Heritage Initiative) or search our Instagram hashtag (#cjhi) for weekly updates highlighting our research and other news.

***"The online tour
builds upon 34
historic sites."***



Family members of groom Martin Samuels (of Brooklyn, New York) and bride Irene Stern pose at her parents' home on MacGregor Drive in Columbia on their wedding day, April 18, 1950. Three generations of Stern family members attended the ceremony, officiated by Rabbis David Karesh and Hyman Danzig at the House of Peace Synagogue, as well as members of the Friedman, Lipton, Solomon and Sribnick families. *Image courtesy Marcie Stern Baker*



A Letter to the Jewish Community from the Columbia Hebrew Benevolent Society

Dear Jewish Community,

One of the institutions of Jewish life in Columbia that we take for granted is the Columbia Hebrew Benevolent Society Cemetery. Since 1822, it has provided a peaceful place for us to bury our loved ones. It is the largest Jewish cemetery in the Midlands, and the chapel on the grounds is the oldest Jewish building in Columbia. Each generation is responsible to care for the Cemetery and assure it continues to exist for our ancestors, for us, and for those who will follow. Currently, a small group of older people oversees the affairs of the Cemetery. It does not take care of itself. Just as our ancestors did, we who care for it today want to engage the next generation to join us and accept the responsibility to care for it when we are no longer able to do so.

If you are and intend to remain in Columbia, then we ask you to consider joining us in our efforts to care for it. The Columbia Hebrew Benevolent Society does not necessarily require a lot of time, but it does require ongoing commitment to attend two meetings a year and be available to help when needed. We offer substantial membership discounts to young adults who commit to becoming active members. Membership in the Columbia Hebrew Benevolent Society assures the privilege of burial in our perpetual care cemetery.

The Columbia Hebrew Benevolent Society is not affiliated with any other Jewish organization. Any member of the Jewish community is welcome. We also welcome interfaith couples as long as one spouse is Jewish. If you are interested, please talk with Nard Fleischman at 803-254-6116. You can also visit our website at www.Columbia-HBS.org.

Thank you,
Nard Fleischman, Secretary-Treasurer
Telephone: 803-254-6116 | Email: nfleisc@bellsouth.net

Officers:
Stephen T. Savitz, President
Jeff Abrams, Vice President
Bernard "Nard" Fleischman, Secretary-Treasurer
Ilsa Young, Assistant Secretary-Treasurer

Tu B'Av Means Love and Dancing

"He who loves brings G-d and the World together."
– Martin Buber, At the Turning

We are always full of love at the Katie & Irwin Kahn Jewish Community Center, but we are filled with a special love come the month of Av. For the second year, we will be celebrating the holiday of Tu B'Av with a family-friendly dance where we will celebrate our wonderful Jewish community and all those who support us. You are invited to come and dance, play, and eat with us on Thursday, August 11th from 5:30 pm to 7:30 pm as we celebrate all things love and love related. Co-sponsored by PJ Library of the Columbia Jewish Federation and the Katie & Irwin Kahn JCC, this dance is not to be missed. We provide dinner, a DJ, crafts, and of course a few special surprises for kids of all ages. Admission is \$10 per family for JCC Members and \$15 per family for those who have not yet joined the JCC. (See the back cover for details.) You won't find a better bargain anywhere! We hope you'll come and celebrate love, the end of summer, and the joy of being Jewish with us.



JEWISH BEDTIME STORIES and SONGS

**Are your children or grandchildren
receiving PJ Library books?**

**If they are between 6 months and 8 years of age
with Judaism as part of their lives, they should be!**

These books are absolutely FREE with NO strings attached,
thanks to the generosity of the Harold Grinspoon Foundation, the Columbia Jewish Federation,
the Baker & Baker Foundation, and Sue & Jerry Kline.

www.facebook.com/PJColumbia



Made possible through a generous engagement grant from PJ Library.
PJ Library WOW brings families together for quality Jewish programs in the Irmo/Lexington area.
Contact Cheryl Nail at cheryl@jewishcolumbia.org or 787-2023 x. 211 for details.



KOL HAKAVOD

כל הכבוד

TO OUR 2016 CAMPAIGN DONORS*

TODAH RABAH

תודה רבה

THANK YOU FOR INVESTING YOUR RESOURCES IN—AND DEMONSTRATING YOUR COMMITMENT TO—OUR LOCAL JEWISH COMMUNITY AND THE WELL-BEING OF JEWS IN ISRAEL, EUROPE AND AROUND THE WORLD.

DO GOOD EVERYWHERE - FROM ANYWHERE

MEN'S DIVISION

KING DAVID -
\$30,000-\$59,999

Baker and Baker Foundation/
John Baker and Steve Anastasion

JERUSALEM -
\$10,000-\$29,999

Alan & Charles Kahn
Jerry Kline
Fred Seidenberg***
Bill Stern

PRIME MINISTER -
\$5,000-\$9,999

Keith Bahreck***
Roger Blau
Bruce Filler
David Kulbersh***
David Lovit***
Herbert Niestat
Stephen Serbin***
Gerald Sonenshine***
Howard Weiss***

BEN GURION -
\$3,000-\$4,999

Robert Berger
Moss Blachman
Sam Elkins
Henry Goldberg***
Stanley Greenberg***
Richard, Ellen,
Gregg & Caryn Helman
Alan Kantsiper
Jay Kline***
Edward Poliakoff
Andrew Sefran***
Rick Silver
Peter Stahl
Jack Swerling

CHALUTZIM -
\$1,000-\$2,999

Barry Abels***
Michael Arnold
Harvey Belson
Eric Dlaud
Alan Brill
Harold Friedman
Jay Friedman***

Karl Goldberg
Joel Gottlieb***
Jeffrey Gross***
Harvey Helman
David Javalo***
Joel Jacobson***
Hyman Karesh
Robert Kriegshaber***
Manuel Lifchez
Rabbi Sandy Marcus
Henry Miller***
Walker Rast
Steve Savitz
Joe Sharnoff***
Samuel Tenenbaum
Michael Tucker***
Abe Wandersman***
David Zalesne***

MENSCIL -
\$500-\$999

Anonymous
Frank Baker
Sam Baker
Allan Brett
Brian Dumas**
Eric Elkins
Bernard Fleischman, Jr.
Carl Freedman
Isa Griebelberg***
Pierre Jaffe
Harold Kline
Richard Kline
Sol Kline
Neal Louric
Marc Rapport***
Alan Reynes, Jr.**
Steven Rosansky
Jeff Selig

HATIKVAH -
\$250-\$499

Kenneth Berger***
Gerald Breger***
Kenneth Cutler
Rabbi Hesh Epstein***
Robert Feinstein***
Edward Hertz***
Jeffrey Jacobs
Joel Louric***
Marvyn Milman
Howard Nankin***
Gerald Polinsky

David Reisman
Joseph Rosen
David Shure**
Jeff Silver

CHAVERIM -
\$100-\$249

Michael Druva***
Paul Cherney***
Thomas P. Cunningham, Jr.**
Bruce Deutschmann**
Jason Fischbein
Ronnie Frank***
Stephen Friedland
Steven Gendil
Jerry Gibson
Mark Goldenfield
Anthony Goldman**
Joseph Goldson
Joshua Goldson**
Allen Gotbeter**
Ronald Maris***
Joe McGee**
Frederic Medway
Jeffrey Miller
Ben Pearlstone
Jeffrey Mark Picow**
Don Portnoy***
Joseph Roberts
Arnold Schraibman***
Andrew Seidenberg**
Ned Strauss
Neal Sutker
Jeremy Wilson

SHALOM -
\$0-\$99

Anonymous
Koby Abels**
Stephen Bney
Joseph B. Berry**
Jerry Emanuel
Joe Gorchow**
Matt Gottlieb**
Bruce Greenberg, Jr.**
Robert Hodges
Aivar Khasiyotova***
Michael Kozlov***
Robert London**
Justin Peterson***
Shmuel Playfair
David Polen***
Stan Ross

Jerry Rothstein
Scott Saul**
Aaron Small
Ted Solomon
Randy Stark***

WOMEN'S DIVISION

EMERALD LION OF
JUDAH-\$25,000+

Sue Kline***

SAPPHIRE LION OF
JUDAH-\$18,000-24,999

Joni Cutler

LION OF JUDAH -
\$3,000-\$9,999

Gail Anastasion
Barbara Blau
Lilly Filler
Charlotte Kahn***
Jane Kulbersh
Ruth Rast***
Linda Stern
Laurie Walden

POMEGRANATES -
\$2,500-\$4,999

Jackie Dickman Babcock***
Pamela Kay Gross***
Lyssa Harvey
Jennifer Kahn***
Heidi Lowit
Donna Magaro***
Meridith Goldstein**
Nancy Sonenshine

GOLDA MEIR -
\$1,000-\$2,499

Jocelyn Burg***
Toni Elkins
Katherine Friedman***
Gloria Goldberg
Carolyn Kressler Greenberg
Esther Greenberg
Peggy Jacobs***
Shelley Kriegshaber
Susan R. L. Lurie
Patricia Lovit***
Eleanor Niestat

Sandra Poliakoff
Jeannie Rubin
Ellen Seidenberg***
Helen Silver***
Rachel Silver
Erika Swerling
Inez Tenenbaum
Patricia Tucker***
Katherine Wu
Avery Zaluse

OLIM - \$500-\$999

Beth Bernstein
Gail Bienstock
Penny Blachman
Debbie Brett
Sue Deutsch
Joanne Epley
Dolores Friedman
Bluma Goldberg
Heide Golden
Elizabeth Gross***
Ruby Harris***
Raisa Jane Hirsch***
Ferne Kantsiper
Ruth Marcus
Nancy Nankin
Wendy Sharnoff***
Wendy Stahl***
Aileen Sunshine
Lois Wandersman
Vee Wayburn***

HAITIKVAIL - \$250-\$499

Marcie Baker
Melanie Baker
Marsha Belson
Amy Berger
Estelle Bluestein
Susan Brill***
Janet Brownstein***
Libbie Fechter***
Della Fields
Sheila Gendil
Lois Gibson***
Gail Kinard
Margo Goldberg
Ina Gottlieb***
Gerda Kahn
Rebeka Karesch
Beth Maris***
Minda Miller
Shirley Ness***
Arlene Polinsky
Helen Rothstein
Jennifer Savitz
Amy Scully***

CHAVERIM - \$100-\$249

Anonymous***
Alice Kasakoff Adams**
Thalia Birch**
Claire Breger***
Federica Clementi***
Ann Diamond
Jessica Ellenbein***
Blanche Feldman***
Roberta Friedland
Daniela Friedman**
Sandra Friedman
Terry Garber***
Connie Ginsberg***
Karen Goldenfield***
Annette Goldstein
Lycia Goldson
Nancy Gottlieb
Lisa Helfer***
Beth Helman
Hila Horovitz-LaPaglia**
Ellen Humphries
Beryle Jaffe
Belle Jewler
Rabbi Linda Joseph**
Ilene King***
Gail Lieb***
Jane Littmann***
Robin Lourie***
Susan A. Lourie
Marcia Medway
Claire Meltzer
Faye Miller
Peggy Miller***
Debby Mullen***
Michelle Peterson***
Marilyn Picow
Sharon Robinson***
Sara Schechter-Schoeman
Susan Scouten
Julie Strauss
Rina Strauss
Sue Sussman***
Meira Warshauer**

SHALOM - \$0-\$99

Larisa Aginskaya**
Sharon Baty***
Karen Beattie***
Laura Becker
Helen Bellah
Rae Berry
Rimma Brandin**
Dana Cason***
Nancy Cartiff**
Sandy Cowen
Caroline Fins***
Terry Ross Gombert***
Dorothy Greeter***
Carol Hansen***
Sandra Hill***
Carolyn Hudson***
Barbara Kahn***
Sandra Annette Kandel

Paula Karesch***
Rita Klein**
Sheila King***
Cathy Kline
Simone Kozlov***
Basya Lesov***
Barbara Levy
Joan McGee
Carolyn Playfair
Iritia Plukhin
Karen Portnoy***
Barbara Rast
Rosen Rivkin
Michal Rubin***
Cindy Alpert Saad***
Cheri Smith
Anne Solomon
Cindi Stark
Joan Tucker**
Connie Westree**
Leatrice Weiner

FAMILY DIVISION

Dorothea & Melvyn Abels
Vered & Amit Almor**
Kim & David Bannister
Gina & Scott Berry**
Sherrill & Robert Blenner***
Cynthia & Charles Bloom**
Eleanor & Barry Bornstein**
Leila & Jay Bressler***
Rivke & Rabbi Jonathon Case***
Dennis & Pamela Cohen
Laney & Keven Cohen
Myrna & Richard Cohen**
Beth Suttler & Greg Crawford***
Daniela & Michael Dojc***
Melissa & Stanley Dubinsky**
Lydia & Harold Edmonds**
Sandra & Gerald Euster***
Naomi & Steven Grosby Farber***
Karen & David Fechter***
Jennifer & Barry Feldman
Pamela & Eric Feuerstein
Irene & Fredric Fields***
Kimberly & Alex Filler**
Lyssa & David Fischbein***
Gaynelle & Charles Geffen***
Linda & Darryl Giddings***
Gail & Robert Ginsberg
Susan & Carson Goldstein
Deborah & David Greenhouse***
Eden & Matt Hendrick***
Irene & Harold Jablon***
Shannon & Alan Jolles***
Yelizabeth & Talap Khaziyetova
Hannah & Paul Kirschenfeld***
Vanessa & Joe Kligman
Lynda & Barry Laban
Mary Ann & Benjamin Levinson**
Joann & John Mattei**
Bobbie & Gad Matzner
Julie & Mark Mayson**
Joanna & Joshua McDuffie***

LA & Bruce Miller**
Kim & Sam Moses***
Rabbi Leah & Adam
Doberne-Schor***
Irene & Douglas Millman***
Rabbi Meir & Sheindel Muller***
Cheryl & Allan Nail***
Brenda & Larry Needle
Robin & Morgan O'Donnell**
Judith Kall & J. Alexander
Ogden**
Michele & David Perrick
Elizabeth Ann & Marc Posner**
Feliks & Sarra Rabinovich
Frieda & Stephen Ritter***
Natalya & Boris Rozin***
Robin & Gary Rudman***
Adele & Herman Salzberg***
Emily & Howie Scher***
Victoria & Dmitri Schoeman
Candice & Scott Serbin**
Erica & Todd Serbin***
Eliza & Troy Sexton**
Arnie & Cecil Sherman**
Rabbi Daniel & Morgan Sherman
Laurie & Andy Slack***
Judy & Linwood Small***
Saskia Coenen & David Snyder
Jordan & Scott Speer**
Susan & Sherwood Stark***
Mimi & Sol Stein
Harry & Sandy Strick
Debra & David Tedeschi
Mindy & Andrew Tucker***
Barbara & Frank Volin***
Nancy & Richard Wassermann
Sharon & Alan Weinberg***
Ella & Tristan Winkle
Julie & Jon Zivony

*As of June 8, 2016

** First-Time Donors

*** Increased Pledge
from 2015 Campaign



"The Holocaust Remembered Exhibit is now available in a portable, lightweight travel version of our permanent exhibit."

CHEC Spring 2016 Highlights

Lyssa Harvey, CHEC Co-Chair

Holocaust Remembered Exhibit at The South Carolina State Museum

- Columbia Holocaust Education Commission's exhibit *Holocaust Remembered* was displayed in The Palmetto Room at The South Carolina State Museum during the month of April. Thank you to the museum staff who helped to plan, promote, and docent while the exhibit was there.
- A docent training provided by Commission members Lyssa Harvey, Marlene Roth, and Cheryl Nail was held for over 50 State Museum docents and staff members. Special materials were created by the State Museum to support the exhibit.



- It was reported by the State Museum staff that over 6,000 visitors had the opportunity to view the exhibit during this time.
- Historic Columbia's Columbia Jewish Heritage Initiative held a Survivor/Liberator panel discussion, "Confronting the Holocaust... and the Aftermath" at the SC State Museum as an additional program for the *Holocaust Remembered* Exhibit.



The panel was facilitated by Robin Waites, Executive Director of Historic Columbia. Panel members were children of Survivors: Lilly Filler, Henry Goldberg, and Henry Miller, as well as Moffat Burris, a Liberator. The SC State Museum reported that this was one of the most well attended events at the museum in years.

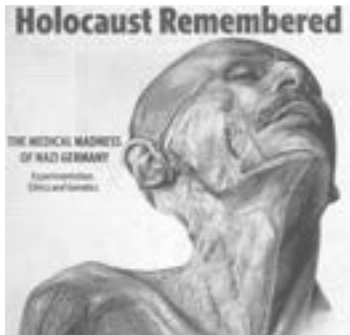
- The *Holocaust Remembered* Exhibit was moved to the Katie and Irwin Kahn Jewish Community Center's lobby for the month of May.
- 200 Students from Killian Elementary and Longleaf Middle Schools came for a special tour of the exhibit. With appreciation to David Polen (whose Grandparents were survivors) and Esther Greenberg, who did an excellent job addressing these groups.



- The *Holocaust Remembered* Exhibit is now available in a portable, lightweight travel version of our permanent exhibit. This travel version can be checked out by special groups, schools, agencies, churches, and synagogues. ***See box on next page for additional information.***

(cont. on next page)

Third Holocaust Supplement Special to
The State Newspaper



- The Commission was proud to announce its release of the 3rd Holocaust Education Supplement on April 24th in the Sunday edition of *The State* newspaper. Lilly Filler, editor of this important supplement, "The Medical Madness of Nazi Germany Experimentation, Ethics and Genetics," was proud to announce that Palmetto Health sponsored this year's special edition. The Commission would like to thank all contributors: Lilly Filler M.D., Lyssa Harvey Ed.S, Charles Beaman, Allan Brett M.D., F.K. Clementi Ph.D., Janice G. Edwards, M.S. CGC, Harold Freidman M.D. Rebecca Gray, Jane Kulbresh, Donna McGreevy, RN, BSN, Donald McKale, Ph.D, Henry Miller, O.D., Hope Patterson, Robin Rosenthal Ph.D, Marlene Roth M.A., Erica Smith, Abraham Wandersman, Ph.D.
- *The State's* distribution for this supplement is to over 450,000 households and can also be found on their website, as well as on CHEC's website: www.columbiaholocausteducationcommission.org.
- If you would like to have a copy of this year's supplement you can pick one up at the Katie and Irwin Kahn Jewish Community Center. You can also contact Cheryl Nail at 787-2023 x. 211, cheryl@jewishcolumbia.org, or Barry Abels at 787-2023 x. 207 or barry@jewishcolumbia.org.
- Preparations for the 4th edition of this important supplement are now being made. The theme will be "Children and The Holocaust."

The Columbia Holocaust Education Commission's *Holocaust Remembered* Exhibit now available in a touring version

The *Holocaust Remembered* Exhibit is now available in a portable, lightweight traveling version of the permanent exhibit. We encourage groups to consider checking out the entire exhibit or certain panels that may fit your educational needs. This is a great addition to helping provide Holocaust Education to South Carolina.



Special groups, schools, agencies, churches, and synagogues can now check out this exhibit, or panels of this exhibit, for special display purposes.

The *Holocaust Remembered* Exhibit, which can be viewed on site, online, or by Power Point, can also be displayed at your site.

This traveling exhibit consists of 12 two-sided stands with two panels per stand.

The exhibit can be checked out through a short, simple application on our website: www.columbiaholocausteducationcommission.org

Please contact Cheryl Nail or Barry Abels for any questions about checking out our exhibit: 803 787-2023, cheryl@jewishcolumbia.org, or barry@jewishcolumbia.org

The Columbia Holocaust Education Commission would like to thank Historic Columbia for partnering with us to provide funding for the travel version of Holocaust Remembered.

Thank You from the Selden K. Smith Foundation for Holocaust Education

Minda Miller, Foundation Chair

The 2016 Midlands Gives community non-profit campaign was a huge success. The Selden K. Smith Foundation for Holocaust Education wants to thank all our donors for their support and generosity.

Over \$7,000 was raised!

Your contributions will ensure grant funding for Holocaust educational programming in our state. This programming includes such exciting projects and events as:

*An internationally traveling Anne Frank exhibit. We are proud to help sponsor this incredible teaching tool showcased at middle schools across the state. The exhibit features a chronological panel display of events in telling Anne Frank's story as well as a documentary and book. Student docents are trained to lead student groups through the exhibit, and the exhibit is also made available to the community for viewing.

*Digitization of previously recorded testimony given by survivors in South Carolina. The Foundation has partnered with the SC Council on the Holocaust to bring testimony from our state's survivors out of the shadows and onto the web. These testimonies will be available for public access online.

*Holocaust supplements. Both *The State* newspaper in Columbia and *The Post and Courier* in Charleston again featured a special Holocaust supplement in April 2016.

*Week-long Holocaust teachers' workshop. This annual event will again be held in July at Columbia College, in addition to a day-long workshop in the fall.

* Mini grants. Numerous grants awarded to teachers for Holocaust books, speakers, student field trips and other Holocaust and intolerance related projects.

* Myrtle Beach Holocaust Memorial. A permanent Butterfly Memorial Monument at Grand Park to honor the memory of all the children who perished in the Holocaust was dedicated May 1, 2016.

* Teachers' Study Trip to Poland. An intensive Holocaust study trip to Poland every other year visiting concentration camps, the Warsaw Ghetto, and other historically important sites with a Holocaust educator. Graduate credit is given to teachers. Next trip summer 2017

For further information on the Foundation please visit our website: <http://holocausteducationfoundation.org/>

Monthly Caregivers Support Group



For anyone who provides care of any sort for a loved one of any age

First Tuesday of each month at 7 p.m.
Held at Tree of Life Congregation

Next meeting will be Tuesday, July 5 at 7 p.m.

The group is open. All are welcome!
You can come and go as it meets your needs.
Members provide one another on-going support.

We also invite guests who provide information of particular interest.

SPIRITUAL PREPARATION FOR THE DAYS OF AWE



September 18 | 2-5pm
Beth Shalom Synagogue

An exploration of the process of Teshuvah (Return) including mindfulness meditation, both sitting and walking; contemplation in nature in the magical woods across from the Cutler Jewish Day School; and creative interaction with liturgy. The entire community is welcome, and no previous experience with meditation is needed. Childcare available upon request. Led by Meira Warshauer.

Please sign up in advance by calling Alice Kasakoff Adams (803 782 9390) or email her at alice_bee@earthlink.net. For further information contact Meira Warshauer at meira.warshauer@gmail.com.





CJDS to Start 25th Year

Rabbi Meir Muller, Ph.D., CJDS Principal

"The past 25 years have been wonderful, but all of us at CJDS feel the brightest years lay ahead!"

Twenty-five years ago, Morah Sheindal and I (along with our six-week-old son) moved to Columbia. Our goal was to start a school. However, as the community already had a Jewish preschool, and we did not want to create any divisiveness, we instead organized youth programming for older children. At the end of our first year in Columbia, the Jewish preschool in town announced it would be closing. In August of 1992 we opened the Columbia Jewish Preschool (later to be renamed the Cutler Jewish Day School). The school was located in the old JCC on Trehnolm Road. The school began with 12 students (one class in the woman's locker room, one in a small art room, and my office in a closet). The school stayed at the JCC through 1999 when it was announced that the JCC would be put up for sale.

In 1999 the school moved to the Beth Shalom Synagogue. At that time the school had 73 students. The synagogue agreed to a one-year rental agreement, and the school concurred that it would relocate in a year. Fifteen years later, after a continued wonderful relationship with the synagogue, the school signed a 30-year lease. This long-term lease afforded donors a level of comfort to donate funds for an expansion.

Over the past year the new wing of the school has been constructed. This area will house the infant class through kindergarten. Currently the existing space is being renovated to create a better home for the Norman and Gerry Sue Arnold Elementary School and support areas (office space, multipurpose rooms, etc.).

The school is projected to start this coming school year with over 170 students. The past 25 years have been wonderful, but all of us at CJDS feel the brightest years lay ahead!



Tuesdays with Friends

Tuesdays with Friends

Beth Shalom Synagogue, 5827 N. Trenholm Road
www.BethShalomColumbia.org

**Senior Program—Everyone Welcome
Come Enjoy the Fun, Food & Friendship**

There will be NO program in July.

**Tuesday, August 2, 2016
11:30 am - 1 pm**

**Featuring a musical performance by the
JCC Campers and BINGO!**

There is no charge to attendees thanks to a
generous donation made by
Doris & Ronnie Frank

*In loving memory of our parents:
Edda Frank and Kurt Lichtenstein and in honor
of Robert Frank and Susi Lichtenstein.*

**Tuesday, September 6, 2016
11:30 am - 1 pm**

**Enjoy a symphony concert performance with
Morihiro Nakahara, Music Director for the
SC Philharmonic!**

There is no charge to attendees thanks to the
generous donation made by
Dolores Friedman and family

In loving memory of Sig Friedman.

This program is funded in part with a generous grant from the BJH Foundation for Senior Services.



The BJH Foundation for Senior Services is a non-profit foundation exclusively committed to enhancing the lives of Jewish elderly residing in North and South Carolina through programs, activities and organizations that share their mission in accordance with Jewish practices and beliefs.

We need your presence at
Harvest Hope Food Bank

2220 Shop Road

Thursdays:
July 28 & August 25
5 p.m.

Come and volunteer with Beth Shalom to
help distribute food to the needy in Columbia.

Providing for the needs of hungry people
by gathering and sharing quality food
with dignity, compassion, and education.



Religious School News

Registration packet for the 2016-2017
religious school year will be mailed
in early August.

First day of Religious School is
Sunday, September 11th

Mazal Tov
to our upcoming B'nai Mitzvah!

Hannah Jacobson, August 5, 7:00 pm
Emily Kahn, August 26, 6:30 pm & August 27, 9:30 am



"It is my honor to assume the role of Senior Rabbi at the Tree of Life Congregation on July 1, 2016."

Shalom Y'all

Rabbi Eric Mollo, Tree of Life

Genesis 12:1 Adonai said to Abram, "Go forth from your land, the place of your birth, to the land that I will show you."

And Abram arrived in Columbia and said, SHALOM Y'ALL!

It is my honor to assume the role of Senior Rabbi at the Tree of Life Congregation on July 1, 2016. Many of you know my predecessors, Rabbi Joseph, Rabbi Sherman, and Rabbi Marcus. I hope that in the coming year, I will be a familiar face to those who have been touched by their work. I am proud to follow in the footsteps of these great Reform rabbis. I am also pleased to be working alongside my wife, Rabbi Carolan Glatstein, who will be assuming the role of Religious School Director. We have a daughter, Isabelle, who will be one in July.

I grew up in State College, PA and know very well what it's like to live in a college town. That is, I know what it's like to work around the schedule of a growing university. Just being in proximity to USC helped me to feel right at home in a place that is still largely unfamiliar; that, and a love of grits (thanks, Waffle House!). I also know what it's like to work for a sense of belonging in an area where the Jewish population doesn't exactly mirror Crown Heights. Being a minority comes with certain challenges, but I have found that solutions often manifest themselves when we build bridges of understanding between cultures. I am very excited to work with my colleagues and my community to build on the work of our predecessors in this regard.

Carolan and I are humbled and grateful for the southern hospitality we have received by members of the Tree of Life Congregation and by other Jewish professionals in the area. We are inspired by the rich history of Columbia and the Tree of Life Congregation. We can't wait to learn more about southern Jewish culture and fully immerse ourselves in the greater community of Columbia. For over 120 years, The Tree of Life community has been a presence in Columbia, and we intend to insure that the community remains strong and vibrant into the next 120 years.

May we go from strength to strength.

The Tree of Life Congregation Holland Bulb Sale is once more underway with top quality No.1 selected bulbs that are guaranteed to bloom. The Tree of Life has been selling Holland bulbs since 1954. Blooms grace many personal gardens, patios, and various businesses across the Midlands.

Many different varieties are available and prices vary. Even if you live in an apartment, bulbs grow beautifully in containers. They also make lovely gifts that last for a long time.

Orders should be placed by July 30th to ensure delivery by mid-October.

Proceeds go towards several community projects including the Green Team initiative. For information or an order form call Cheri Alexander at 803-530-4307 or email cheridonna@prodigy.net. The order form can be found in the foyer at the temple, at www.tolsc.org and in the monthly newsletter.





Interested in YAD Co-Ed Kickball this Fall? *Let us know!*

Let us know if you want to play on the YAD Co-Ed Fall Kickball team. Open to all! We've had a great turnout the last three years and are inquiring about interest for a team this year.

We play in the casual league, and each game lasts approximately one hour. The season starts mid-August, and games are played Monday evenings in downtown Columbia.



Cost is \$20/person.

Email yadcjf@gmail.com to confirm you want to play.

YOU ARE INVITED TO THE

PTu B'Av Party

Thursday, August 11

5:30 PM - 7:30 PM

at the Katie & Irwin Kahn Jewish Community Center
306 Flora Drive | Columbia, SC | 787-2023

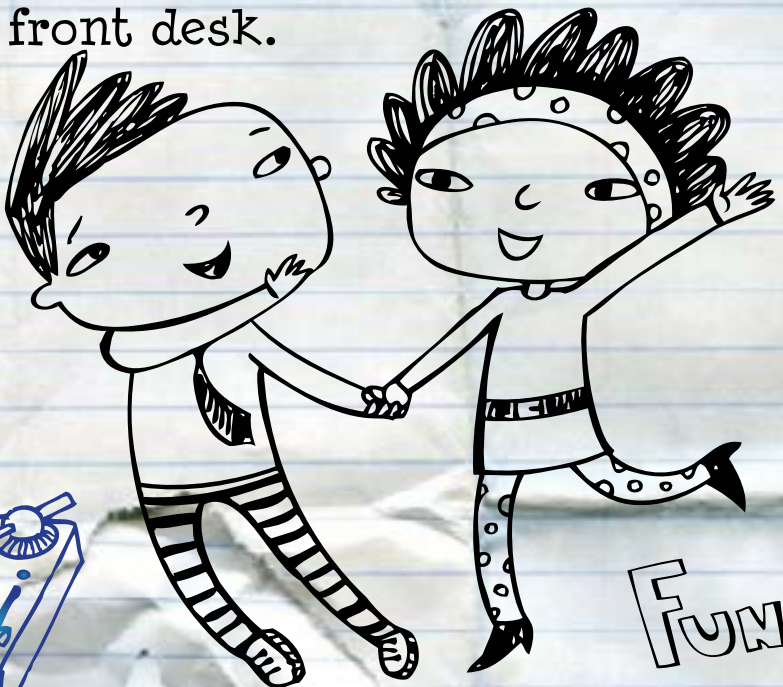
Funky

We are celebrating the Jewish holiday of **LOVE** with a fun-filled dance for the entire family! Enjoy a pizza dinner, an awesome DJ with great music, face painting, special guests and activities with your friends at the JCC. RSVP with payment at the JCC front desk.

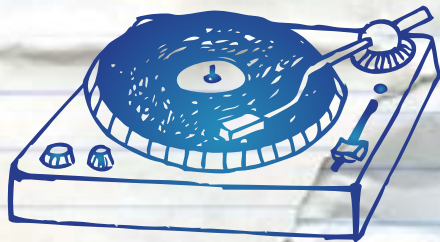


\$10 per family for
JCC Members

\$15 per family for
Non-Members



FUN



JCC
You belong here.

Pj Library
JEWISH BEDTIME STORIES AND SONGS