



The Jewish  
Federation  
OF EASTERN CONNECTICUT

# 2024-25 IMPACT REPORT



# TABLE OF CONTENTS

Letter from Executive Director Rachel Levy & President Scott Wolfe .....	3
Organizational Chart of JFEC Staff .....	4
Financial Report .....	5
PJ Library .....	6
Youth Groups .....	7
Jewish Community High School .....	8
Encountering Program .....	9
Senior Programming .....	10
Israeli Young Emissaries .....	11
Community Outreach .....	12
Jewish FilmFest .....	13
Jewish Leader Newspaper .....	14
JFEC Board of Directors & Staff .....	15
Scroll of Honor .....	16

The report that follows was compiled, edited, and typed by  
the staff of the Jewish Federation.

We apologize for any errors or omissions.



The JFEC is a member agency of the  
United Way of Southeastern Connecticut







## ***Letter from the Executive Director & President***



The vision of the Jewish Federation is to ensure a vibrant, inclusive Jewish community connected to Jews in Israel and around the world.

At our Board Retreat last year, we created a list of priorities for the year that included 8 committees and dozens of volunteers from across the region.

We are happy to showcase the impact of their efforts in the pages of this Impact Report. Some of the infrastructure that you might not have noticed behind the scenes includes the following:

Establishing a partnership with Secure Community Network and a Regional Security Advisor to ensure that we keep our community safe at all of our gatherings.

Strengthening our Living Bridge with Israel through our Partnership Program with Afula Gilboa. We sent Rachel to the Region along with the Executive Directors from the other 8 Federations in the Partnership for a 5 day trip to all of our recipient agencies. While she was there, Rachel interviewed and hired 2 new Young Emissaries for 2025-2026.

We strengthened our Friendly Visitor program by reviewing the list of older members of our community who wanted a visit at their home, Assisted Living facility or Long Term Care facility. We grew our amazing group of volunteers and expanded it to include our Jewish Community High School students.

Several volunteers stepped forward to analyze the increase of antisemitism in our Middle and High Schools. We are working together to develop new strategies for the school year.

Finally, we thanked Barbara Wolfe for 5 years of dedicated service to the youngest members of our community with the PJ Library program. After interviewing several people, we hired Liza Miller to be the new Coordinator. She joined our team in April and has already hit the ground running with fantastic gatherings around the region for ages 0-8.

We are very grateful to our team of board members and staff who make so much happen every day for our Jewish community, and we are looking forward to another wonderful year!

Scott Wolfe

Rachel Levy

# JFEC Organizational Chart of Staff

**RACHEL LEVY**  
**EXECUTIVE DIRECTOR**  
[rachel@jfec.com](mailto:rachel@jfec.com)

---

BOARD MANAGEMENT  
STAFF MANAGEMENT  
BUDGET PLANNING  
FUNDRAISING  
GRANT WRITING

**MARCIA REINHARD**  
**ASSISTANT DIRECTOR**  
[mreinhard@jfec.com](mailto:mreinhard@jfec.com)

---

ISRAELI EMISSARIES  
YOUTH PROGRAMS  
ARTS AND CULTURE  
EDUCATIONAL EVENTS  
COMMUNITY EVENTS

**REBECCA REINHARD**  
**EXECUTIVE ASSISTANT**  
[rebecca@jfec.com](mailto:rebecca@jfec.com)

---

WEBSITE  
COMMUNITY DATABASE  
JEWISH FILMFEST  
ANNUAL CAMPAIGN  
OFFICE OVERSIGHT

**YOLETTE SENAT**  
**IVELISSE GONZALEZ**  
**CASE MANAGERS**  
[caseworker@jfec.com](mailto:caseworker@jfec.com)  
[help@jfec.com](mailto:help@jfec.com)

---

OPERATION COOL DOWN  
REFUGEE COMMUNITY CASE  
MANAGEMENT  
CRISIS SUPPORT

**LIZA MILLER**  
**PJ LIBRARY**  
**COORDINATOR**  
[pjlibrary@jfec.com](mailto:pjlibrary@jfec.com)

---

PJ LIBRARY

**MIMI PERL**  
**CONSULTANT**  
[mimi@jfec.com](mailto:mimi@jfec.com)

---

JEWISH LEADER, EDITOR

**TRACEY MARTINEU**  
**BOOKKEEPER**  
[finance@jfec.com](mailto:finance@jfec.com)

---

FINANCE & ACCOUNTING

**DONA CASEY**  
**SENIOR CONNECTIONS**  
[kenndona59@gmail.com](mailto:kenndona59@gmail.com)

---

KOSHER HOT LUNCH

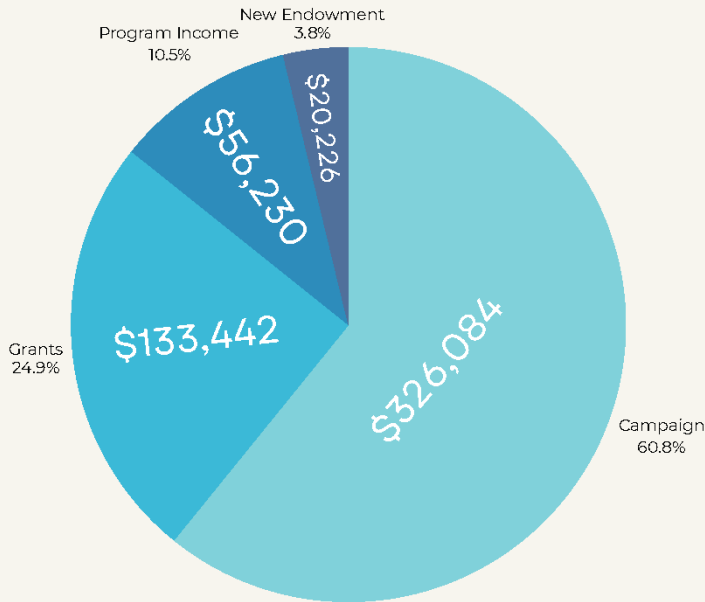


# FINANCIAL REPORT

2023: \$347,803 Raised

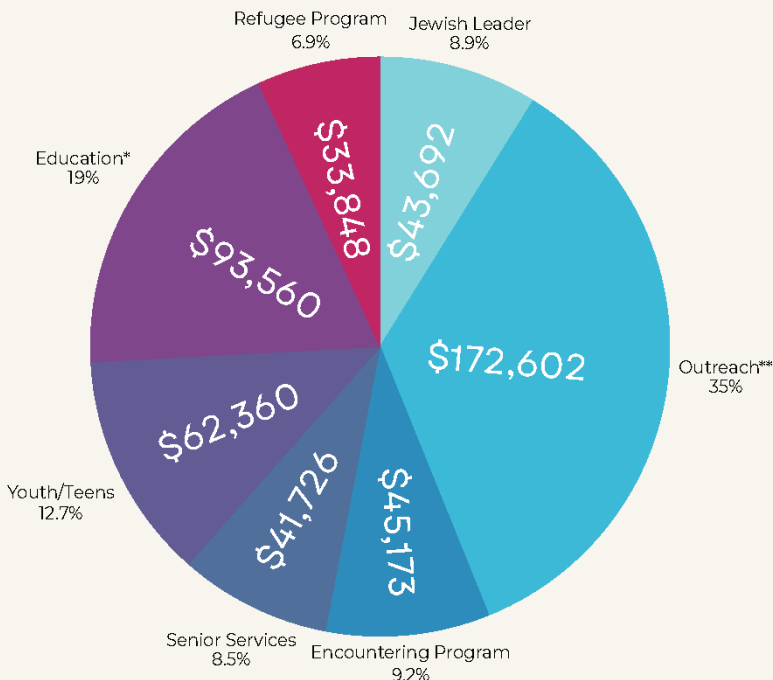
2024: \$523,600

**2025: \$535,982**



Program Allocations

**\$492,961**



## Grants Received

2023: \$54,223

2024: \$78,532

**2025: \$133,442**

- United Way - Crisis Relief/Seniors
- JFACT/DSS - Haitian Refugee Program
- Frank Loomis Palmer Fund - Encountering Program
- Community Foundation of Eastern CT - Tzuzammen
- Harold Grinspoon Foundation - PJ Library

## Israeli Emissary Program\*:

**\$56,452**

## Special thanks to:

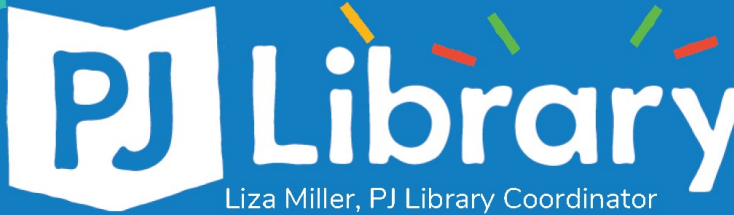
- Temple Emanu-El
- Congregation Beth El
- Wireless Zone
- Ossen Family Foundation
- Jewish Agency for Israel
- Beth Jacob Synagogue
- Temple Bnai Israel
- Zeff Family Foundation
- Steve & Debbie Daren
- Kim & Kenn Fischburg
- Bruce & Lori Goldstein
- Peter Lewiss, Matthew & Florence Lewiss

**\*Included in Grants**

\*Emissaries & Israel Education

\*\*Community Outreach, Film Fest, & PJ Library

Register at  
pjlibrary.org



*Thank You*  
to past PJ Library  
Coordinator  
Barbara Wolfe!

- **PJ Library sends free high-quality Jewish children's books to families every month.**
- Kids 0-8 receive an age-appropriate picture book
- Ages 9-12 get to choose their own book for PJ Our Way
- For every kind of Jewish- no matter their level of observance
- Welcoming, inclusive, inspiring, strengthening children's connections to Jewish values
- PJ Library is so much more than just the wonderful books!
- Offering free holiday guides, activity ideas, podcasts, recipes, music
- **Our events build vibrant Jewish communities for local families**



### PJ Library Families joined together for:

Stroller Walks,  
Rosh Hashanah,  
Apple Picking,  
Hanukkah,  
Shabbat Dinners,  
Tu Bishvat Play  
Group,  
Hamantaschen  
making,  
Lag Baomer



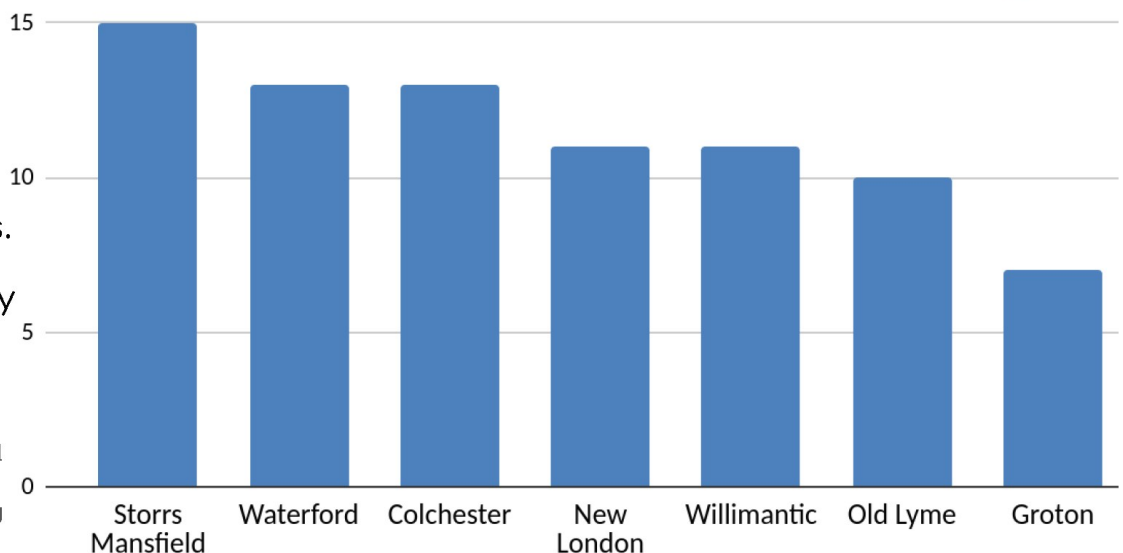
**We serve  
124 families  
and a total of  
164 children.**

### Top Towns Where PJ Library Families Live

In the past year  
we have  
welcomed  
12 new families.

Active PJ Library  
families live in  
37 towns in  
Eastern CT

Thank you to the Harold  
Grinspoon Foundation  
and JFEC for supporting  
this valuable program.





---

# YOUTH GROUPS

---



## Junior Youth Group

- Began in Fall of 2006
- Events every other month instead of monthly
- Events included a bonfire, apple & pumpkin picking, a movie day, BLAST in Waterford, and a day at Providence Place Mall
- Many thanks to parents who assisted with driving and chaperoning



## Yachad BBYO

- Membership is up and attendance at events has been very good
- Board met monthly to plan future events and evaluate past ones
- Held monthly events for the teens in our community
- Celebrated holidays together, attended regional weekend conventions, and regional events
- Teens found meaning in Judaism and discovered their own Jewish identity
- Youth group gives our teens a safe place to be Jewish and make new friendships
- '25-'26 Board Members:
  - Sarah Kaplan - President
  - Anna Sheikowitz - VP Programming
  - Anna Goldfarb - VP Jewish Programming
  - Clarissa Mock - Communications
  - Daniel Sheikowitz - Treasurer





---

# JEWISH COMMUNITY HIGH SCHOOL

---



- Libbie Duskin - Coordinator
- Monday nights at Temple Emanu-El
- 10 students enrolled from Waterford, East Lyme, New London, & Niantic
- Interactive programs with Israeli Emissaries Ben and Yahav
- Encountering Survivors with Helen Elperina, Rosa Goldblatt, & Romana Strochlitz Primus
- Philanthropy with Rachel Levy by packing and delivering donations for convalescent homes, menstrual poverty products and kids in Israel
- Beauty Queen of Jerusalem with Ella Sackett
- Discussion with Dan Bendor on Israel: A Simple Guide to the Most Misunderstood Country on Earth
- Roi Refaeli, a past emissary, visited and spoke with the teens about his experience in the IDF and the current war
- Two graduates this year: Charlotte Frank and Ryan Shapiro

**Call Rebecca at the JFEC office to register for next year!**

---

# STROCHLITZ HOLOCAUST RESOURCE CENTER: ENCOUNTERING PROGRAM

---

The Mission of the Strochlitz Holocaust Resource Center is to teach the history of the Holocaust, in order to promote human dignity, combat antisemitism, and confront all forms of hate.

The Encountering Program enable students to learn personal, first-hand accounts of history and examine their own role in creating a just society.



- Artie Dean taught 4 different sessions at Clark Lane Middletown School this year that reached a total of 240 students
- Helen Elperina visited Old Saybrook High School and shared her story to 40 students
- Rosa Goldblatt shared her story to 40 students at Waterford High School. In addition, she met with 120 students at Plainfield High School
- Vivian Zoe spoke to the Holocaust studies class at Ledyard High School
- We started a new program this year where the children of Survivors met with the JCHS Students
- In the summer of 2024, we created a new partnership with the Voices of Hope to coordinate with their trained descendants of Holocaust Survivors from Greater Hartford
- We are grateful to Rachel Donnell for sharing her story with 60 students at Montville High School
- Andy Sarkany spoke at Guilford High School at an assembly of 300 students; Valley Regional High School in Deep River; Nathan Hale-Ray Middle School in East Haddam; and Niantic Library
- David Gerber spoke at Nathan Hale-Ray High School.
- Helena Schanzer spoke in Madison to 30 8th grade students at The Country School



---

# SENIOR PROGRAMMING

---



## Kosher Hot Lunch

- Meals prepared by Dona Casey
- Partner with TVCCA to serve a weekly hot lunch to adults 60+ at Temple Emanu-El
- Connect seniors in the community
- Gives seniors a chance to enjoy friendship, education, and sharing life experiences



## Tzuzammen

- Monthly BYOT (bring your own transportation) & BYOM (bring your own money) lunch
- Meets at a different venue every 3<sup>rd</sup> Wednesday of the month
- Program intended to connect active adults for eating, schmoozing, and peer learning



## Friendly Visitors Program

- Delivering Yiddishkeit, traditions, and joy to Jewish residents at long-term care facilities & private homes
- Our volunteers connected with and visited over 100 people around 4 holidays



# ANNUAL REPORT

## Yahav & Ben

### YE 2024 - 2025



#### WORKING WITH OUR YOUTH AND TEENS

- Jewish community high school
- BBYO events
- Junior Youth Group

#### RELIGIOUS SCHOOLS AND SYNAGOGUES

- Ahavath Achim - Colchester
- Ahavath Chesed - New London
- Beth Jacob Synagogue - Norwich
- Sharah Zedek - Westerly
- Congregation Beth-El - Waterford
- Congregation B'nai Shalom - Putnam
- Temple Bnai Israel/Religious School - Willimantic
- Temple Emanu-El/Religious School - Waterford
- Congregation Beth Shalom Rodfe Zedek - Chester

#### BUILDING BRIDGES

- Israeli Chef
- Hebrew Cafe
- Senior Lunches/Events
- Rotary Club
- Senior centers
- Public Middle Schools
- Public High Schools
- Connecticut College
- UConn Hillel

#### EVENTS

- October 7<sup>th</sup> Commemoration
- Yom Ha'Atzmaut and Israel's Memorial Day
- State Capital in Hartford for Yom HaShoah

#### HOST FAMILIES

This year we had the opportunity to stay with the most wonderful host families who opened their homes and hearts to us, all on a voluntary basis

Ben was hosted by  
The Goldblatts (Norwich)  
The Shapiros (Old Lyme)  
And the Selkes (East Lyme)

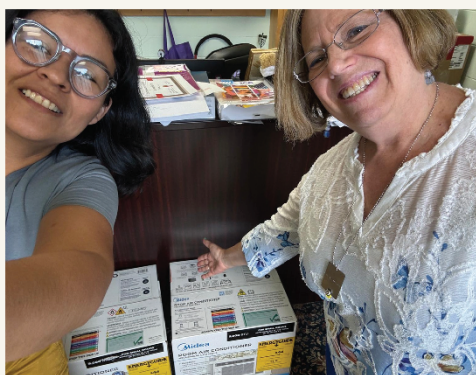
Yahav was hosted by  
The Pascals (Norwich)  
Libbie Duskin & Blake Schembri (Ledyard)  
Randee Siegal & Charlotte Frank (Niantic)



---

# COMMUNITY OUTREACH

---



## Operation Cool Down

- Provides air conditioners to seniors, families, and individuals who have a medical need
- This program is generously supported by individual donors as well as the Felcorn Endowment Fund
- Last year we distributed almost 20 air conditioners to people in need



## Refugee Crisis Support

### **Yvette Senat - Refugee Community Case Manager**

- Provides clients with financial supports and services designed to promote economic self-sufficiency
- Aided multiple clients in the process of being able to get married
- Helps clients with translation for documents, phone calls, and applications
- Received \$47,500 from Department of Social Services to support new immigrants



## Regional Crisis Support

### **Ivelisse Gonzalez - Case Manager**

- Servicing the community for three years in English and Spanish
- Funded by United Way grant of \$10,000 for Case Management
- Provides crisis intervention in emergencies around shelter, food, clothing, and other basic needs through the provision of information and referrals, advocacy, and access to benefits and resources

## Jewish FilmFest

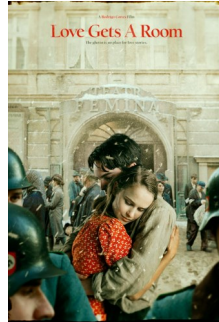
- All 6 films screened in person in Norwich, Waterford, & Westerly
- Raised \$6,000
- Over 140 people attended



Keep the Change



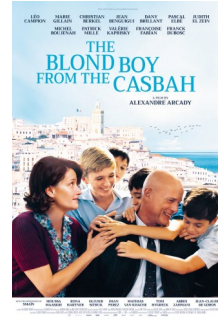
Neither Day Nor  
Night



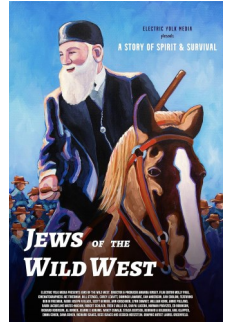
Love Gets A  
Room



Pink Lady



The Blond Boy  
From the Casbah



Jews of the Wild  
West

## Committee Chair

Jerry Schwell

## Committee Members

Arlene Dressler  
Barry Feldman  
Myra Gipsten  
Rick Gipstein  
Steve Kaufman

Gail Leiser  
Ron Leiser  
Loretta Levy  
Stephen Panikoff  
Aaron Rosenberg

## Thank you to our 2025 Jewish FilmFest Sponsors!

### Executive Producer

~Leiser Family Foundation

### Directors

~Carol Curland  
~Daren Philanthropic Fund  
~Martin & Millie Shapiro  
~Valenti Family of Dealerships

### Leading Actors

~Attorney Bart Sayet  
~Attorney Richard J. Pascal, LLC  
~Kim & Kenn Fischburg

### Supporting Cast

~Cecile & Barry Feldman  
~Rabbi Aaron & Karen Rosenberg  
~Rick & Myra Gipstein  
~Karen & Stan Bloustine



# JEWISH LEADER

Serving The Jewish Communities of Eastern Connecticut & Western RI

VOL. 90 NO.4 PUBLISHED MONTHLY APRIL 8, 2024 APRIL 11, 2024 NEXT DEADLINE MAY 3, 2024 10 PAGES

HOW TO REACH US: PHONE 860-442-8062 • FAX 860-442-1475 • EMAIL: MIMI@JFEC.COM • BY MAIL: 400 NEW LONDON TURNPIKE, NEW LONDON, CT 06460

## Wishing you a joyous & kosher Passover!

First Seder, Monday, April 22, 2024

### Campaign is near goal thanks to you!

If you can't attend this year's Seder, please contribute to the campaign. You can do so by sending a check to the Jewish Federation of Eastern Connecticut & Western Rhode Island, 400 New London Turnpike, New London, CT 06460, or by calling 860-442-8062. Your contribution will help us reach our goal of \$100,000.

### 'A Million Stars' raises awareness

The Jewish Federation of Eastern Connecticut & Western Rhode Island is proud to announce the success of its "A Million Stars" campaign. This year, we raised over \$10,000 to support the construction of a new Jewish Community Center in New London, CT. The campaign was a huge success, thanks to the support of our members and the community.

### Annual community Yom Hashoah program

Sunday, May 5, 2024  
Temple Emanuel, Waterford  
The Jewish Federation of Eastern Connecticut & Western Rhode Island is proud to announce the success of its annual Yom Hashoah program. This year, we held a special service at Temple Emanuel in Waterford, CT. The service was a moving and inspiring event, and we are grateful for the support of our members and the community.

### HLA Scholarships applications available

The Jewish Federation of Eastern Connecticut & Western Rhode Island is proud to announce the availability of HLA Scholarships. These scholarships are available to Jewish students who are currently attending college or university. Applications are available until June 1, 2024.

# JEWISH LEADER

Serving The Jewish Communities of Eastern Connecticut & Western RI

VOL. 90 NO.7 PUBLISHED MONTHLY FEBRUARY 26, 2024 FEBRUARY 29, 2024 NEXT DEADLINE MARCH 3, 2024 10 PAGES

HOW TO REACH US: PHONE 860-442-8062 • FAX 860-442-1475 • EMAIL: MIMI@JFEC.COM • BY MAIL: 400 NEW LONDON TURNPIKE, NEW LONDON, CT 06460

## Jewish FilmFest kicks off March 21

The Jewish Federation of Eastern Connecticut (JFEC) will present the 33rd annual Jewish FilmFest from March 21 through April 28, 2024. Celebrating 33 years of showcasing Jewish-themed films, the festival will feature a variety of films, including documentaries, feature films, and animated films. The festival will be held at the Temple Emanuel in Waterford, CT.

## Solidarity Mission to Israel March 31-April 9, 2024

Our community from the most of Jewish families and individuals now has a chance to experience the Holy Land and the modern State of Israel. The mission will be led by Rabbi David Saperstein, President of the American Jewish Archives Foundation. The mission will include a visit to the Knesset, the Israeli Parliament, and a tour of the West Bank.

## The Faces of October Seventh - Jenny Svidlitz's story

By Rachel Levy  
JFEC's new documentary, "The Faces of October Seventh," tells the story of Jenny Svidlitz, a young woman who was killed in the October 7th attacks in Israel. The film is a powerful and moving portrait of a young woman who was a member of the Jewish community in Israel.

## Encountering programs -- sharing stories

By Eliza Saperstein  
Last month, JFEC's new encounter program, "Encountering Differences," was a huge success. The program brought together members of the Jewish community and members of other faith communities to share their stories and experiences. The program was a great way to build bridges and foster understanding between different faith communities.

- Mailed to over 1200 households in Eastern CT, Western RI, MA, FL, and several additional states
- 287 households contributed \$19,084 for an average gift of \$66 during the 2024 Annual Appeal
- To advertise in the Leader or to make a donation contact Mimi Perl at [mimi@jfec.com](mailto:mimi@jfec.com) or 860.442.8062

## WHY THE LEADER IS PUBLISHED

The Jewish Leader's goal is to publish local Jewish news monthly to make it a community newspaper for all the Jews in Eastern CT & Western RI.

Thank you to...

- Volunteers who labeled the Leader in 2024: Dave & Donna Armstrong, Peter Lacy, Kim Fischburg, and Sheri Pascal
- Regular columnists Artie Dean and Teddy Weinberger
- Leader Communications Committee for their input and suggestions

# JEWISH LEADER

Serving The Jewish Communities of Eastern Connecticut & Western RI

VOL. 90 NO.10 PUBLISHED MONTHLY NOVEMBER 8, 2024 NOVEMBER 11, 2024 NEXT DEADLINE DEC. 4, 2024 10 PAGES

HOW TO REACH US: PHONE 860-442-8062 • FAX 860-442-1475 • EMAIL: MIMI@JFEC.COM • BY MAIL: 400 NEW LONDON TURNPIKE, NEW LONDON, CT 06460

## Share your chanukiah

The Jewish Federation of Eastern Connecticut & Western Rhode Island is proud to announce the success of its annual Chanukiah campaign. This year, we received over 100 Chanukiahs from our members and the community. The Chanukiahs were a beautiful and inspiring display of Jewish pride and tradition.

## Ben and Yehav meet the community

The Jewish Federation of Eastern Connecticut & Western Rhode Island is proud to announce the success of its annual Ben and Yehav campaign. This year, we received over 100 Ben and Yehav gifts from our members and the community. The Ben and Yehav gifts were a beautiful and inspiring display of Jewish pride and tradition.

## Community celebration of Veterans Day

The Jewish Federation of Eastern Connecticut & Western Rhode Island is proud to announce the success of its annual Veterans Day celebration. This year, we held a special service at Temple Emanuel in Waterford, CT. The service was a moving and inspiring event, and we are grateful for the support of our members and the community.

## Hebrew Café off to strong start

The Jewish Federation of Eastern Connecticut & Western Rhode Island is proud to announce the success of its annual Hebrew Café. This year, we held a special service at Temple Emanuel in Waterford, CT. The service was a moving and inspiring event, and we are grateful for the support of our members and the community.



# The Jewish Federation OF EASTERN CONNECTICUT

THE **STRENGTH** OF A PEOPLE | THE **POWER** OF COMMUNITY

## 2024-25 Jewish Federation of Eastern CT Officers & Trustees

### ***Officers***

***President*** - Scott Wolfe

***Campaign Chair*** - Sema Stein

***Endowment Chair*** - Helen Elperina

***Secretary*** - Rosa Goldblatt

***Treasurer*** - Barbara Sahagan

### ***Trustees***

Daniel Bendor  
Carol Curland  
Steven Daren  
Sandra Davidson  
Roslyn Etra  
Evert Gawendo  
Daniel Gezari

Jenn Kronick  
Elyse Landesberg  
Louis Lasko  
Ron Leaser  
Peter Lewiss  
Peter Malinow  
Ben Miller

Romana Strochlitz  
Primus  
Sarah Rogovin  
Martin Rutchik  
Jerome Schwell  
Gabe Stern  
Cindy Weiner

## MISSION STATEMENT

The Jewish Federation of Eastern Connecticut is the community's convener, the umbrella, the hub. Federation connects you to everything available in our community, in Israel, and throughout the Jewish world.

We flourish as a community due to collaboration among all parties, including the Jewish Federation, synagogues, agencies, and others to collectively strengthen our community. Strong financial support ensures the sustainability of our community and that those who are struggling, both locally and abroad, have the resources to survive and thrive. Federation employs change and innovation to creatively meet the evolving needs of a diverse and multigenerational population.

>> You can reach JFEC Staff by phone or email <<

Jewish Federation of Eastern CT | 400 New London Tpke, Norwich, CT 06360  
860-442-8062 | [www.JFEC.com](http://www.JFEC.com) | [office@jfec.com](mailto:office@jfec.com)





The Jewish Federation  
OF EASTERN CONNECTICUT

*Extends a Heartfelt Thank You  
to our Generous Contributors*

## *Scroll of Honor*

*(This list reflects Total FRD from January 1, 2024, through  
December 31, 2024, which includes all donations including Endowment,  
Jewish Leader, gifts in kind, Israel Relief, and the Emissary Fund)*

### **\$7,500 and up**

The Jewish Agency for Israel  
Jewish Federation Association of CT  
Carol Curland  
Selma Daren z”l  
Sandra Davidson  
The Community Foundation of Eastern CT  
Kim & Kenn Fischburg  
Hendel Foundation  
Lori & Bruce Goldstein  
Patricia Hendel  
Leiser Family Foundation  
Kathleen McFadden & Gabriel Stern  
Romana Strochlitz Primus & Charles Primus  
Barbara & Scott Wolfe  
Wireless Zone

### **\$5,000 to \$7,499**

Anonymous  
Joann Chapel & Robert Kaufman  
Daren Family Philanthropic Fund  
Lauren & Patrick Doherty  
Lisa & Evert Gawendo  
Peter Lewiss  
Barbara Sahagan

### **\$2,500 to \$4,999**

Karla & Daniel Bendor  
Charter Oak FCU  
Chelsea Groton Foundation  
Christine & Jerome Fischer  
Rosa & Michael Goldblatt  
Harold Grinspoon Foundation

Florence & Matthew Lewiss

Lori Lindfors & Bart Sayet

Jewish Federations of North America

Deborah & Jerome Schwell

Millie & Martin Shapiro

Sema Stein

Kenneth Sunshine

Schania Zelvin

**\$1,000 to \$2,499**

Jamie & Mark Block

Helen Burke

Temple Bnai Israel

Cathy & Steven Bokoff

Ellen & Salvador DeLeon

Millie Devine

Karen Dinsfriend

Chamber of Commerce Eastern CT  
Foundation

Maier Fein

Gail & Jack Feinberg

Barbara & Marc Ginsberg

David Golden

Peter Greenwald

Linda Heist

Rivka Horowitz

Lily Indrawati

Harriet Juli

Barbara & Jerry Kil

Dana & Martin Kline

Bernice Krantz

Jennifer Kronick & Jason Shapiro

Patti & Jim Kronick

Bob Linden – In memory of Caren Linden z”l

Anne & Paul Luner

Sheri & Richard Pascal

Valerie Popkin

Lise & Robert Reardon

Sarah Rogovin

Karen & Rabbi Aaron Rosenberg

Rona & Martin Rutchik

Yelena & Eugene Sapozhnikov

Jewett City Savings Bank

Ana & Jeffrey Schneider

Joanne B. Shor Levy & Kenneth P. Levy

Gail & Joel Wildstein

Julie & Mark Wolman

**\$500 to \$999**

Anonymous

Florence & Michael Betten

Karen & Stanley Bloustine

Marcia & Howard Brensilver

Linda & Leonard Cohen

Helen Elperina & Michael Rabinovich

Bella Fiore Restaurant

Julie & David Fryburg

Daniel Gezari



Myra & Richard Gipstein

Gertrude & Seebert Goldowsky Fund

Miriam & Alan Greenwald

Marcy Kaplan

Hali & Girard Keeler

Renee Kohanski

Hennie Kurzman & Peter Lacy

Gail & Ronald Leaser

Jay Levin

Monica & Mark Levin

Loretta & Marshall Levy

Rachel Levy

Pfizer Matching Program

Adrienne & Andrew Parad

Mary & Edward Perl

David Pushner

Marcia & Michael Reinhard

Rabbi Susan Schein

Susan & Charles Seeman

Irene & Tom Smith

Louise & Richard Steinberg

MJ Sullivan

Jessica & Steven Tedisky

Jessica & Michael Tripicco

Valenti Family of Dealerships

Iris & Melvin Yoselevsky

Congregation Sarah Zedek

**\$250 to \$499**

Rabbi Ken Alter

Sharon & Rabbi Carl Astor

Cheryl & Peter Auerbach

Sherry Barnes

Randee & Martin Berliner

George Burton

Lenore & Donald Campbell

Bella Chernovitsky & Aleksandr Kamenetsky

Lisa & Michael Cohen

Sondra & Louis Cohen

Sandra Crawford & Jeffrey Dubins

Roslyn Etra

Cecile & Barry Feldman

Marilyn Fishbone

Whaling City Ford

Florence Frank

Joshua Friedman

Libby Friedman

Allison Glickman

Ronald Goldstein

Pepi Kahn & Steven Green

Patricia & Alan Gruber

Linda Hershman

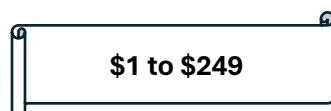
Old Saybrook High School

Sheila & Victor Horvitz

Edward Kleinman

Trudy & Sol Klioze

Andy Levine  
 Rachel & Eric Levine  
 Ellen & Ivan Lissauer  
 Stephanie & Peter Malinow  
 Debra Miller & Keith Kriet  
 Juner & Mark Patnode  
 Amy Perry  
 Janice & Richard Pullman  
 Ruth & Laurence Radin  
 Barbara & Richard Richmond  
 Faye Ringel  
 Tracy & Sam Schaperow  
 Jane & Marvin Schnur  
 Stuart Schwartzstein  
 Barbara Senges & John Murphy  
 Michael Sherb  
 Rachel Sherman  
 Janine & Ira Sitko  
 Michele & Harvey Snitkin  
 Judith & Robert Strick  
 Sherry Turner  
 Gail & Steven Weber  
 Cindy & Barry Weiner  
 Irene & Mickey Weiss  
 Rebecca Woodward & Adam Kaufman  
 Diane & John Zaccaro



Ella Agranovich & Sam Elperin

Linda & Paul Agranovitch  
 Robbin & Brian Alpert  
 Larisa & Danil Anisimov  
 Donna & David Armstrong  
 Svetlana & Alexander Atamanuk  
 Sally & Lewis Baker  
 Tanya Ballestrini  
 Minerva Beard  
 Lori Bendett & William Struzinski  
 Sean Bendick  
 Deborah Benik & Edward Shapiro  
 Deborah & Gregg Benson  
 Rabbis Polly Berg & Marc Ekstrand  
 Sonia & Hyman Biber  
 Lucy & Kingsley Blatter  
 Temple Bnai Shalom Sisterhood  
 Jane & Neal Bobruff  
 Arlene & Gary Bohn  
 Roz & Marc Bokoff  
 Karen & Gregory Boluch  
 Gail Boms  
 Luba Boyko  
 Nancy Brand  
 Martha Briggs  
 Dianne & Paul Brody  
 Rebecca & Isaac Brody  
 Marjorie Brown  
 Nancy Butler  
 Amy & Scott Camassar



Beth & Garon Camassar  
Jeanette Carolson  
Mindy Carson  
Theresa & Delmar Carter  
Cheryl Champ-Kapelner  
Eila & Ira Cohen  
Eileen Cohen  
Toby Coit & Richard Wolak  
Reva & Melvin Coleman  
Elizabeth Connolly  
Betty & Norman Cooper  
Kristi & Bruce Cooper  
Lori Corah  
Naomi Daina  
Richard DelRusso  
Michelle Dempsey  
Judith Dessel & Bernard Giserman  
Susan Detz  
Synthia Diaz  
Gail Dickinson  
Arlene Dressler  
Elizabeth-Ann & Martin Drobiarz  
Libbie Duskin  
Bertrand Duval-Arnould  
Judith & Michael Egan  
Marcy Einhorn  
Mark Faiola  
Wendy Faul  
Andrea & Fred Fenton

Jo-el Fernandez & Sanford Greenhouse  
Dean Festa  
Sandra & Abraham z”l Fisher  
Lucretia Flamming  
Irma Flitt  
Michele Flowers  
Olivia Flowers  
Susan & Chris Fornara  
Edie & Richard Freeman  
Iris & Gary Freeman  
Joanne & Franklin Friedman  
Ian Frommer  
Laura Frommer  
Wendy & Christopher Gamble  
David Geligoff  
James Gentry  
Jay Ginsberg  
Judith Glickstein  
Edward Goldberg  
Judi & Ed Goldberg  
Seth Goldberg  
Rachel Goldblatt  
Andrew Goldman  
Phyllis Goldstein  
Jonatha & Lester Gorin  
Joan & Michael Gordon  
Ellen Gottfried  
Lynne Grand  
Amy Greenberg & Kenneth Green

Ellie & David Greenberg  
Eunice Greenberg  
Barry Greenhalgh  
Melanie Greenhouse  
Marjorie Guerin  
Sue Hainline  
Patricia & Jay Hans  
Rebecca & Michael Haynes  
Shirley Hazler  
Frances & Martin Hirschowitz  
Phyllis Holtzman & Richard Simonson  
Linda & Jerry Holzschlag  
Dan Horgan  
Julia Israelski  
Doreen Janssen  
Jacob Johnson  
Elena Kabanova & Igor Roytfeld  
Jennifer Kaplan  
Kathy z"l & Marc Kashar  
Tammy & Rick Kaye  
Safrat & Isidore z"l Katz  
Jane & Norman Katsoff  
Lisa & Rabbi Earl Kideckel  
Hinda & Elliot Kimmel  
Ellen Kleckner  
Eleanor Koss-Glater  
Andrea & Robert Lobb  
Elyse Landesberg  
Kristin & Louis Lasko

Sandra Laub  
Gerald Leibowitz  
Harriet Lesko  
Cynthia Lesser  
Anita Levine  
Rachel Levine  
Barbara & Joel Levitt  
Michael Lewis  
Pamela Lewis  
Kathryn Liebman  
Nadine & Mark Lipman  
Joan Lipson-Lewis  
Melanie & Gideon Loewenstein  
Alla Londinski & Boris Nalibotski  
Lorin & Susan Lorinsky  
Barbara Luftglass-Morea & Gregory Morea  
Elaine & Daniel Malchman  
Judy & Steve Mann  
Diane & Gene Maran  
Pamela Matzdorff  
Merrill Mazzella  
Erica & Richard McCaffrey  
Jill & Richard Mehlman  
Jo Michaelson  
Leigh Mhlrad  
Sue & Stuart Miller  
Lynne & David Miner  
Judith & Alan Morrison  
Phyllis & Gary Motin



Andrew Nollman  
Amy Orce  
Susan Orenstein  
Emilia & Valery Osovesky  
Lois & Stephen Panikoff  
David Patton  
Dolly Peress  
Carol Persky  
Dana Peters & Martin Manley  
Stefanie Peterson  
Frederick Phelps  
Judy Polinsky  
Sharon Portnoff  
Merle Potchinsky & Rav Jeremy Schwartz  
Rebecca Reinhard  
Celena Reiser  
Roberta Reisner-Winograd & Samuel Winograd  
Anna & Mike Reiter  
Carol & Peter Revicki  
Katherine Rosen  
Sharon Rosen & Marshall Katz  
Alexandra & Mark Rosenthal  
Harriet Rosenthal  
Maira Ross  
Armi & Jonathan Rowe  
Nathaniel Rowe  
Marillyn & Gerald Rubin  
Ella Sackett

Lorie Sagin  
Susan & Jesse Samuels  
Janet Sauvageau  
Henry Savin  
Irene Schienberg  
Gail Schor  
Stanley Schwartz  
Melvin Scott  
James Seger  
Sarah & Gregg Selke  
Jeremy Serwer  
Florence & Raphael Shafner Charitable Fund  
Eileen Shapiro  
Inna & Alexander Shapiro  
Sandra Sharr  
Jennifer & Russell Sheikowitz  
Alisa & Milton Sheriff  
Aline & Mathew Shulman  
Amy Sieczkowski  
Marlene Siegel  
Rande Siegal  
Karen & Craig Silver  
Wayne Silver  
Elaine & Howard Smith  
Gayle Smith  
Blyse Soby  
Margaret Soussloff  
Leslie Spees  
Jamie & John Stavropoulos

Susan Steady

Beverly Steinman

Lois & Don Steinman

Hillary Stern & Marc Kronish

Maryashi & Rabbi Avrohom Sternberg

Debbie & David Stoloff

Amy & Sheldon Stricker

Lois Taylor

Mona & Jeremy Teitelbaum

Jennifer & Wes Thompson

Stephanie & Barry Thorp

Tracy Todd Savageaux

Svetlana Trebukhova

Nancy & Robert Trostler

William Turner

Nancy & Russell Tuthill

Kirsten Tuzzo

Patricia Ulery

Michelle Vitale

Claire Warren

Corinne & David Weber

Lawrence Webman

Jane & Henry Weinberg

Shoshanna Weiss & Mark Newall

Hannah Winograd

Sherry Wolfe

Marlene Yahalom

Theresa & Jerome Zabiski

Liora Zeevi

Scott Zelken

Marlene Terry Ziegler

Joel Zuckerbraun

We tried to do our best, but if there are any mistakes, please let us know so we can make the correction.

To make your donation and add your name to the Scroll of Honor, please call the Federation office at (860) 442-8062, or donate online at [www.jfec.com](http://www.jfec.com)