



# Jewish Federation of Southern New Jersey & OUR FAMILY OF AGENCIES

THE **STRENGTH** OF A PEOPLE.  
THE **POWER** OF COMMUNITY.



2023

COMMUNITY

**IMPACT**

**REPORT**



# OUR MISSION

The Jewish Federation of Southern New Jersey cares for those in need, enhances Jewish life, and ensures the continuity of a vibrant Jewish community locally, in Israel, and around the world.

## Contents

Accessibility & Inclusivity For All	2-3	Grants & Scholarships	9
Advocating Beyond Our Borders	4	Financials	10-13
Protecting Our Jewish Communities	5	Thank You	13
Bring people together through Jewish Culture & Education	6-7	2023 Federation Donors	13-15
Investing In Our Staff	8	Board of Directors	16
		JFSNJ Staff	17

# From our President & CEO

For over 100 years now, the Jewish Federation of Southern New Jersey has stood as a pillar in our community. We've added more milestone moments to our organization's timeline, celebrated our accomplishments and built on the work and success of our past.

As Israel's judicial reform continues to forge a deep divide amongst its citizens, we are unwavering in our support of our beloved homeland and all it stands for - freedom, democracy and a free Jewish state. Traveling to Israel for a 48 hour fly-in was a core memory for us both in our respective roles here at Federation. Yet during a dark time in the country's history, in collaboration with the Katz JCC, we honored Israel's 75th anniversary here at home this year with a festive community celebration that brought so many together.

We've always placed an emphasis on our staff, who are the spokes and gears that keep raising the bar on our system's deliverables every day. By investing in The JFed Way, we have enhanced our community of an extraordinary culture, and we're continuing to lead our staff to great accomplishments. These 30 fundamentals guide our teamwork and ultimate success and we're excited to already see the results of this work taking place. We are taking new approaches in how we can listen more generously, invest in relationships, embrace diverse perspectives and find a way, no matter what the obstacle.

Innovation and reimagining our future is woven into the fibers of our being, as evidenced in the incredible work happening in our system and across each agency; the Katz Jewish Community Center, Jewish Family & Children's Service, Jewish Community Relations Council, Jewish Senior Housing and Healthcare Service, Jewish Community Foundation, Inc., Jewish Community Properties and JFed Security, LLC.

We are thankful to each and every one of you who supports our mission, new initiatives, and partnerships. We truly are stronger together, and we look forward to a continuous, bright and prosperous future as a community.

With gratitude,  
Ed & Jen



A handwritten signature in black ink, reading "Ed Rivkin".

**Ed Rivkin, President**



A handwritten signature in black ink, reading "Jennifer Dubrow Weiss".

**Jennifer Dubrow Weiss, CEO**

לְמַדּוּ הַיָּטֵב דְּרָשׁוּ מִשְׁפָּט, אֲשֶׁרוּ חֲמוּץ; שִׁפְטוּ יְתוֹם, רִבּוֹ אֶלְמָנָה

**Learn to do good. Devote yourselves to justice; Aid the wronged.**

**Uphold the rights of the orphan; Defend the cause of the widow.**

*Isaiah 1:17*





# Accessibility & Inclusivity For All

We believe that everyone has the right to be included in community.

This is especially, but not only, made evident by programs and services the Jewish Federation and our families of agencies provide within our Older Adults and Special Needs Areas of Impact.

This year we launched Older Adults Resource Connections (OARC), a hotline that has everything for older adults – programs, services, events, health care information, activities, and resources for older adults in South Jersey. Developed in collaboration with Aleph Home

Care and Samaritan, OARC is only a call or an email away to receive knowledge and support from our team.

Our JFed Rides program, in partnership with Envoy America offering transportation for older adults living in Burlington, Camden, and Gloucester counties, continues to thrive. We have escorted 243 enrolled participants on 1,213 rides and counting with highly-trained drivers to their destinations, from doctors' appointments to the grocery store and everything in between so our older adults don't miss important

life moments. Thanks to a grant from the Raymond & Gertrude R. Saltzman Foundation, subsidies are available to those that qualify.

Aleph Home Care, an award-winning department of the Jewish Federation, continues to help older adults maintain their independence and feel safe with quality care from skilled certified home health aides. The Aleph Adult Day Center expanded its hours to increase flexibility for families as well as the variety of activities offered, which are available for older adults with and without cognitive impairments.

## Older Adults

**150%**

increase of participation at the Aleph Adult Day Center

**1,213**

JFed Rides provided from December 2022 - August 2023

**430**

older adults each month, on average, participated in the Katz JCC's Life Long Learning Program

**150,000**

hours spent with clients during 22,000 visits by Aleph Home Care staff





Weinberg Commons, our affordable housing community for older adults (age 55+) and adults with special needs in Cherry Hill, NJ, has increased engagement efforts with residents for both the older adult and special needs communities.

One fan favorite activity is Shabbat celebrations at Weinberg Commons. Federation staff and lay leaders show their love for residents by coming together at the complex to welcome Shabbat. Together we recite the Shabbat blessings, sing songs, and have a healthy snack.

Through programs like the ACHaD (Achieving Community Hopes and Dreams) Squadron, a basketball team for individuals with special needs and the JCC Camps at Medford's Open Hearts/Open Doors (OH/OD) program, which provides children with disabilities the opportunity to fully participate with age-appropriate peers at camp, the Jewish Federation works to ensure that no person living with special needs is left behind. We also launched the "Jewish Disability Services - Together We Make An Impact" Podcast with

co-hosts Adam Roth, M.B.A. M.Ed., JFSNJ's Director of Special Needs and Rose Greenblatt OTD, OTR/L, specifically related to community health and advocacy.

Our work to create an inclusive environment for all reaches beyond the older adult and special needs communities. Our agencies are providing safe spaces and support for teens with mental health issues, victims of domestic abuse, and LGBTQ+ youth and their allies. We're coordinating and providing financial assistance for parents in need to be able to give their children access to camp and to early childhood centers, thanks to partnerships with Foundation for Jewish Camp and the Raymond & Gertrude R. Saltzman Foundation. These are just a few of the opportunities our system offers and continues to develop.

We ensure everyone feels that they have a place in our amazing South Jersey community – together we are stronger.

## Special Needs

**500+**

listeners follow the new "Jewish Disability Services - Together, We Make An Impact" Podcast, which exposes and explores real issues facing the disabled community

**88**

children participated in the JCC Camps at Medford's Open Hearts/Open Doors inclusion program

**337**

adults with disabilities were helped to reach their full potential and pursue independent, fulfilling lives through services provided by JFCS

**44**

individuals participated with 25 volunteers in this year's ACHaD Squadron Basketball season

# Advocating Beyond Our Borders



This year, the Jewish Federation worked diligently to ensure the well-being of Jewish communities globally by providing financial assistance through our Global Connections Area of Impact, supporting special projects in the Former Soviet Union, Ethiopia, Israel, and beyond.

We are staunch advocates for justice for Jews everywhere, whether it is one individual or groups in a country.

Since the wrongful imprisonment of reporter Evan Gershkovich—the son of Jewish refugees who escaped the Soviet Union and now live in the South Jersey community—who was arrested by Russian security services and charged with espionage in 2023, our Jewish Federation leaders have had a seat at the table with government officials and the Jewish Federations of North America (JFNA) to help bring Evan home. We collaborated with JFNA to send Evan over 3,000 letters with words of encouragement, thoughts and prayers ahead of the Jewish High Holidays.

When possible, our leaders are on the ground abroad working to bring positive change.

In March, JFSNJ President Ed Rivkin and Chief Executive Officer Jennifer Dubrow Weiss participated in a 48-hour fly-in

to Israel, coordinated by JFNA, alongside 30 Jewish Federation CEOs and board presidents from across North America. During this unprecedented meeting with Israel's senior government leaders on both sides of the Judicial Reform issue and other influential people, Rivkin and Dubrow Weiss engaged in open dialogue on concerns relating to the proposed reforms and to convey issues of the North American Jewish community. A month later, Dubrow Weiss and fellow JFSNJ leaders returned to Israel and attended JFNA's General Assembly honoring Israel's 75th anniversary of Independence. During that trip, they visited Sheba Medical Center in Ramat Gan to see how one of the programs our Global Connections Area of Impact supports—SASA Setton, a social-educational organization partnering to advance education for hospitalized children in Israel—really makes an impact.

We recognize the importance of developing a love for, and connection with, Israel at a young age to cultivate the next generation of strong Jewish leaders in our community. We recently donated \$50,000 to all local synagogues and schools to take students to Israel, as well as to the Katz JCC for teens to go to Israel for the JCC Maccabi Games, so our young community members can experience Israel first-hand.

We will continue to look within and beyond our South Jersey borders to advocate for Jewish communities and democracy, and to overcome any adversity our people face globally, together.

## Global Connections

### \$50,000

was allocated by JFSNJ and the Saltzman Foundation to subsidize teen trips to Israel

### \$100,000

directed to special projects specifically focused on helping at-risk children in Israel, elderly Jews in the Former Soviet Union, Israel's victims of terror, and more

### 3,000

letters sent to Evan Gershkovich and his family, in collaboration with JFNA, to share thoughts and prayers for the High Holidays

### \$15,000

was allocated to JAFI's Ethiopian Aliyah program



# Protecting Our Jewish Communities

Keeping our community safe has always been of the utmost priority, and how we do so has evolved as our world continues to change. The ADL's Audit of Antisemitic Incidents for 2022 showed a 36% increase from the prior year, and the highest number on record since ADL began tracking antisemitic incidents in 1979.\* Over the past several years, an emphasis on securing our Jewish communal buildings and houses of worship has been ignited and together, our community has evolved to meet the needs of our world.

The establishment of JFed Security, LLC this past year, a new agency of the Jewish Federation of Southern New Jersey, has created meaningful, actionable strides in how the community approaches the vital need for security. It serves 12 counties in New Jersey and the entire state of Delaware with training,

emergency operations planning, guard assignments for our local synagogues and agencies and access to intelligence. This community security initiative has changed the norm in how the Jewish community across the country approaches its safety and security and, thanks to grant funding from Jewish Federations of North America's LiveSecure program, the State of New Jersey and the Saltzman Foundation, this forward-thinking work continues.

While JFed Security's work is often behind the scenes, they've partnered with our Jewish Community Relations Council (JCRC) on its Jewish & Proud campaign. This initiative encourages the community to anonymously report threats, incidents or suspicious activity related to Jewish organizations, facilities or community members. Using this reporting method, we're working together to make our community safer. Additional layers of education and awareness continue to strengthen thanks to partnerships with local school districts, particularly with teacher training sessions on antisemitism and Holocaust education, offering Holocaust speaking engagements for students to ignite dialogue, and coordinating trips for teachers and students to visit the US Holocaust Memorial Museum.



The security needs of our community, coupled with an awareness of rising antisemitism and all forms of hate will continue to exist. Together, we will continue to be vigilant, be prepared, and collaborate to educate and evolve.

\*Source: [adl.org/resources/report/audit-antisemitic-incidents-2022](https://adl.org/resources/report/audit-antisemitic-incidents-2022)

## Community Engagement

Facilitated security training for

**1,500**

employees at five JCC summer day camps in New Jersey and Delaware

**2,689**

2,689 counseling sessions fostered clients' mental health and emotional wellness

**14,518**

bags of food distributed weighing 145,186 pounds to help nourish our neighbors in need through JFCS

**35**

new security guards hired to protect the community





# Bringing People Together Through Jewish Culture & Education



At the Jewish Federation, our staff and volunteers work tirelessly to bring the community together, promote Jewish life and learning, and connect to our culture and heritage in various ways.

Our Jewish Community Relations Council (JCRC) welcomed two ShinShinim, Israeli high school graduates who defer their military service for a year to spend it in the U.S. sharing their love and knowledge of Israel throughout the synagogues, religious schools,

Jewish day schools, JCC Camps at Medford, and other local Jewish organizations in the South Jersey community. They made Israel accessible to our community members and deepened our connections.

We also collaborated with the Katz JCC and all of our agencies to host a family-friendly Israel 75 event commemorating the 75th anniversary of Israel's independence. Through an immersive virtual reality tour of

the streets of Tel Aviv, an exclusive art exhibit, a variety of family activities, live music, food, and more, our community members grew closer to one another as they celebrated Israel and their Jewish heritage.

Our ongoing support to local Jewish day schools Kellman Brown Academy (KBA) and Politz Day School through funding, tools, and resources allows them to give our community's children an exceptional education while



instilling Jewish traditions and values. Recognizing that summer camp can similarly provide transformative experiences for Jewish campers, we donated more than \$11K to One Happy Camper, an incentive program through Foundation for Jewish Camp, that gives up to \$1,000 for a child to attend a non-profit Jewish overnight camp for the first time.

Additionally, our program, PJ Library – a program that sends free books to Jewish families, co-hosted a variety of events – including Superheroes in the Sukkah with KBA, Grandparent's Corner with the Katz JCC, and more—for children to embrace their Jewish culture. We also released our first ever Holiday Celebration Craft Kit with local business, That Little Extra Design,

for young kids to enhance their creativity skills while getting excited for the Jewish High Holidays.

We remain committed to teaching the next generation of Jewish and non-Jewish students about the Holocaust, making sure our community never forgets. We partnered with the Esther Raab Holocaust Museum & Goodwin Education Center to produce a series of Holocaust Survivor Testimony videos and host screenings, open to the community, at various synagogues.

Through our programs, we will continue to inspire the next



generation to embrace Jewish life and carry on our Jewish community's legacy.



## Family & Youth

**600**

JCC Camps at Medford counselors and staff members were hired to care for 1,593 campers

**3,920**

tweens and teens engaged in JFCS youth outreach programs on addiction, depression and suicide, stress and anxiety, and healthy relationships

**175**

programs were facilitated with schools, synagogues, churches, and community members, reaching over 25,000 people, through Esther Raab Holocaust Museum & Goodwin Education Center

**11,124**

PJ Library books mailed to 927 children this past year



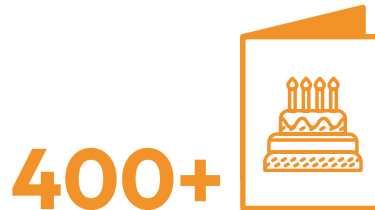
# Investing In Our Staff

## IS INVESTING IN OUR COMMUNITY



50+

professional development classes and opportunities offered to staff this past year



400+

handwritten birthday, work anniversary, and staff appreciation cards given out in the past year to staff



5,177

resumes reviewed leading to 317 new hires



268 hours

were dedicated by the Human Resources department to onboard 592 JCC Camps at Medford employees, of which 266 were new hires

## We celebrate, learn, and grow

- Monthly Mixed Media Educational Sessions
- Staff Seder
- Holiday Celebration
- Monthly Birthday Celebrations
- Mr. Softee Treats
- Staff Advance (Because we don't retreat!)

## CULTURE

### The JFed Way

JFSNJ and our family of agencies adopted **The JFed Way** this past year, a foundation for a thriving community of extraordinary culture. It includes **30 fundamentals** that guide our teamwork and ultimate success including

- *Find A Way*
- *Deliver Legendary Service*
- *Walk In Others' Shoes*
- *Invest in Relationships*
- *Practice Blameless Problem Solving*

600+

employees received The JFed Way insight email each week

342

staff members attended one of our live rollout sessions for the new JFed Way initiative in March 2023

800+

responses to our JFed Way "Lesson of the Week"





# Grants & Scholarships

JFSNJ staff members apply for grants and scholarships that fund numerous programs and services across our Areas of Impact. We also provide financial assistance to individuals and organizations in our community.



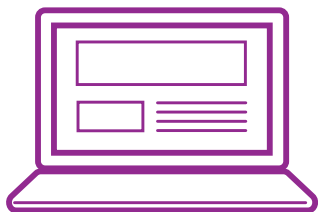
## \$3 million

granted to JFSNJ, including JCC, JFCS, JCRC, and JFed Security, LLC, by the Raymond & Gertrude R. Saltzman Foundation to help support Jewish programs and services in our community



## \$1 million

received from JFNA's LiveSecure grant and the State of New Jersey to support JFed Security, LLC



## \$104,000

awarded to JFSNJ, to support our technology infrastructure, from the Nonprofit Technology Enterprise Network (NTEN) as a result of participation in a program funded by The Harry and Jeanette Weinberg Foundation

## \$112,245

provided by JCF in grants and scholarship awards to benefit individuals and organizations in our tri-county area

## \$46,839

provided by JFSNJ via JFund and One Happy Camper for Jewish overnight camp and teen Israel experiences

## \$35,395

awarded in grants by the Jewish Women's Foundation of Southern New Jersey to support organizations locally and abroad

# 2023 ANNUAL TOTAL SUPPORT

*Benefiting local, national, and overseas programs and services*

# \$12,616,678

**\$10,868,774** Local Support to Agencies,  
Services, & Jewish Education

**\$570,582**

Global Connections

**\$1,033,008**

Capital & Other Reserve Funds

**\$144,314**

National Agencies & Services

# 2023 ANNUAL TOTAL SUPPORT DETAILS

	ALLOCATED UNRESTRICTED FUNDS	ALLOCATED DIRECTED SUPPORT	IN-KIND SUPPORT & DONATIONS	AWARDED ERC & OBTAINED FORGIVENESS OF PPP ROUND 2 LOAN	TOTAL JFSNJ SUPPORT
<b>TOTAL JFSNJ SUPPORT</b>	<b>\$3,270,259</b>	<b>\$2,294,513</b>	<b>\$1,625,814</b>	<b>\$5,426,092</b>	<b>\$12,616,678</b>
Total Local Support to Agencies, Services, & Jewish Education*					<b>\$10,868,774</b>
JCC	\$165,624	-	\$367,997	\$1,712,790	<b>\$2,246,411</b>
JFCS	\$207,399	-	\$205,069	\$155,453	<b>\$567,921</b>
JCRC	\$127,200	-	\$94,990	\$13,264	<b>\$235,454</b>
The Voice	\$32,578	-	\$98,308	\$129,498	<b>\$260,384</b>
Systemwide Security		\$679,686	\$91,989	-	<b>\$771,675</b>
Aleph Home Care & Adult Day Center		\$1,000,000	\$283,917	-	<b>\$1,283,917</b>
Weinberg Commons Residential Services		-	\$258,240	-	<b>\$258,240</b>
Day Schools (KBA, Politz, and Foxman Torah)	\$43,290	\$131,000	\$52,393	-	<b>\$226,683</b>
Area Synagogues		\$119,000	-	-	<b>\$119,000</b>
JCF		-	\$86,441	-	<b>\$86,441</b>
JFSNJ Administrative Services	\$861,453	\$100,000	-	\$815,918	<b>\$1,777,371</b>
JFSNJ Funds Development/Marketing	\$534,476	\$213,470	-	-	<b>\$747,946</b>
JFSNJ Center for Impact & Innovation (CII) (Grants)	\$172,600	\$51,357	-	-	<b>\$223,957</b>
Future Allocations	\$743	-	-	\$2,062,631	<b>\$2,063,374</b>
Global Connections	\$570,582				<b>\$570,582</b>
Capital & Other Reserve Funds	\$410,000		\$86,470	\$536,538	<b>\$1,033,008</b>
National Agencies & Services	\$144,314				<b>\$144,314</b>

\*Total Local Support to Departments, Agencies, & Local Education includes \$2,912,332 of funding provided by the Rayond & Gertrude R. Saltzman Foundation



## 2023 ANNUAL SOURCES OF REVENUE

TOTAL REVENUE  
**\$41,370,437**

INTERNAL AGENCIES			INCLUDES JCF, JCP, JFED SECURITY & JSHHS	
Tuition, Fees, and Dues	\$17,273,942	42%	49,775,221	67%
Donations	\$5,172,803	13%	5,952,108	8%
Pandemic Grants	\$5,410,000	13%	5,410,000	7%
Aleph Home Care Services	\$4,155,865	10%	4,155,865	5%
Weinberg Commons Residential Care Services	\$2,678,901	6%	2,678,901	4%
Other Grants (Includes JCF)	\$2,594,531	6%	3,183,531	4%
Raymond & Gertrude R. Saltzman Foundation (Awarded to Internal Agencies)	\$2,569,683	6%	2,912,332	4%
Government Grants	\$772,375	2%	772,375	1%
Advertising	\$472,204	1%	472,204	1%
Security Services	-	-	387,334	1%
Investment Earnings	\$270,133	1%	(1,516,533)	-2%
<b>TOTAL JFED &amp; AGENCIES</b>	<b>\$41,370,437</b>	<b>100%</b>	<b>\$74,183,338</b>	<b>100%</b>

## 2023 ANNUAL EXPENSES

TOTAL EXPENSES  
**\$36,614,219**

INTERNAL AGENCIES			INCLUDES JCF, JCP, JFED SECURITY & JSHHS	
Katz Jewish Community Center	\$16,457,858	44%		22%
Jewish Family & Children's Service	\$7,595,171	21%		10%
JFED - Aleph Home Care	\$3,731,040	10%		5%
JFED - Weinberg Commons Residential	\$2,774,172	8%		4%
JFED - Administrative Services	\$2,195,237	6%		3%
JFED - Development & Marketing	\$1,465,217	4%		2%
JFED - Center for Impact & Innovation	\$1,163,501	3%		2%
Jewish Community Relations Council	\$635,450	2%		1%
Jewish Community Voice	\$596,573	2%		1%
<b>TOTAL JFED &amp; AGENCIES</b>	<b>\$36,614,219</b>	<b>100%</b>		
			JSHHS	\$35,414,938 46%
			JFed Security	1,465,186 2%
			JCP	\$781,465 1%
			JCF	\$457,650 1%
			<b>\$74,733,458</b>	<b>100%</b>

# Thank You

The Jewish Federation of Southern New Jersey fulfills its important mission through generous donations and funding. JFSNJ is grateful for the profound generosity of the Raymond & Gertrude R. Saltzman Foundation. The Foundation was established in 1978 by Gertrude R. (Ruth) Saltzman, who was fiercely passionate about providing the “plus dimension” to support critical community needs. This special endowment fund operates as a supporting organization of JFSNJ and our family of agencies, and also funds JFSNJ mission-aligned needs locally and in Israel and overseas.

JFSNJ is thankful that the Foundation, in accordance with Ruth's wishes, makes grants each year to fund new and innovative programs, or to expand existing programs essential to the priorities of our community.

## OFFICERS

Arthur Abramowitz, President  
Betty Adler, Vice President  
Richard Goldstein, Vice President  
Robert Schwartz, Vice President  
Harvey Shapiro, Treasurer  
Vicki J. Zell, Secretary

## TRUSTEES

Arthur Abramowitz  
Betty Adler  
David Butler  
Glenn Fuhrman  
Jeffrey Gottlieb  
Andi Levin  
Harvey Shapiro

## EXECUTIVE DIRECTOR

Vicki J. Zell

Raymond & Gertrude R.  
**Saltzman**  
F o u n d a t i o n

# Thank You To Our Donors

The Jewish Federation of Southern New Jersey would like to thank our Partners in Philanthropy for their generous support. These donors have given gifts of \$1,000 or more in fiscal year 2023 to the Jewish Federation and our family of agencies.

### \$100,000+

#### Prime Minister Council

Claims Conference  
Davis Charitable Foundation  
Jane Davis  
Carolyn & Mitchell Davis  
Patricia & Randall Lahn  
FEMA  
Jewish Community Foundation, Inc.  
Judy Love<sup>^</sup>  
Marvin Samson Foundation  
Marvin Samson  
Joanna Samson-Greenfield  
Ros & Stan Middleman  
New Jersey Division of Family Development  
NTEN - Non-Profit Technology  
The Raymond\* & Gertrude R.\* Saltzman Foundation  
ResinTech, Inc.  
Laura & Jeffrey Gottlieb<sup>^</sup>  
Kelly & Larry Gottlieb<sup>^</sup>  
Lynne & Michael Gottlieb  
State of New Jersey

Continental Materials, Inc.  
Betsy & Peter Fischer  
The David\* & Marilyn\* Krupnick Foundation, Inc.  
Holman Automotive Group, Inc.  
Mindy Holman  
Hyland Levin Shapiro LLP  
Gail & Harvey Shapiro<sup>^</sup>  
Alison & Mark Shapiro<sup>^</sup>  
MHS Lift  
Stacy & Andy Levin<sup>^</sup>  
Platt Memorial Chapels, Inc.  
Judith & Bernie Platt<sup>^</sup>  
Hilary & Harry Platt<sup>^</sup>  
Estate of Ruth Saltzman<sup>^</sup>  
Gail & Howard Schaevitz  
ACE Fund of Louis Silverman<sup>^</sup>

### \$25,000+

#### Golda Meir Society

Bank of America  
Donna & Richard Bell<sup>^</sup>  
Maxine & Robert Bluth  
Brodsky Foundation  
Lois & Julian Brodsky  
Tanya & Bucky Buchman<sup>^</sup>  
Canada Dry Delaware Valley  
Margie & Jeff Honickman  
Rhona & Sandy Cohen  
DEL Motorized Solutions  
Dennis Lister

Dollinger Foundation  
Marsha Dollinger<sup>^</sup>  
ACE Fund of H. Richard Dollinger<sup>^</sup>  
Miriam & Alan Feldman<sup>^</sup>  
Emily & Milt Gottschalk<sup>^</sup>  
Levy Foundation  
Jewish Federation of Cumberland, Gloucester & Salem Counties  
Leon L. Levy & Associates  
Fran & Leon L. Levy<sup>^</sup>  
Suzanne Melissa & Victor Levy<sup>^</sup>  
Jaimi & David & Levy  
M. Rosenblatt Roofing  
Eric Meller  
Stephen Meller  
Manger Family Foundation  
Elyse & Andrew Mulberg  
NFI Industries  
Tracy & Jeff Brown  
Sandy & Sidney Brown<sup>^</sup>  
Shop Rite of The Garden State Pavilion / Ravitz Family Foundation  
Jason Ravitz  
Debbie & Shawn Ravitz  
Lauren & Brett Ravitz  
Stacey & Ed Rivkin<sup>^</sup>  
Stacie & Todd Sage  
Loretta & Kenneth Schatz

Gigi & Brad Schwartz  
Sephardic Home for the Aged Foundation, Inc.  
Shane Charitable Foundation  
Gail\* & William Shane  
The David Tepper Charitable Foundation Inc.  
TGG Direct, LLC  
United Way of Greater Philadelphia & Southern New Jersey  
Walk 4 Family & Friends With Cancer  
Vicki & Brian Zell<sup>^</sup>

### \$18,000+

#### Tree of Life Society

Anonymous  
Elkins Chevrolet  
Nikki & Jason Elkins  
Foundation For Jewish Camps  
ACE Fund of Jewish Federation of Southern New Jersey<sup>^</sup>  
Hope & Keith Morgan  
Zev Rose<sup>^</sup>  
ACE Fund of Mildred Sbar<sup>^</sup>  
Elaine Waxman  
Jen & Jim Weiss<sup>^</sup>  
Natalie & Warren Werbit

Wolf Commercial Real Estate, LLC (WCER)  
Leah & Jason Wolf<sup>^</sup>

### \$10,000+

#### Joshua Society

Anonymous (2)  
Roberta & Art Abramowitz  
Caroline & Scott Austin  
The Bennett Group  
Judy & Barry Bennett  
Alysa & Scott Bennett  
Debbi & Michael Bass  
Abby & Bob Belafsky<sup>^</sup>  
Helene & Alan Blumenfeld<sup>^</sup>  
Stephanie & Chuck Cahn<sup>^</sup>  
Barbara & Elliot Coleman  
Columbia Bank  
Connelly Foundation  
Cupersmith, Wilensky, Stempler & Company, LLP  
Fran & Neal Cupersmith<sup>^</sup>  
Dashing Designs, Inc.  
Marcy Dash Friedman & Brian Friedman<sup>^</sup>  
Ecosave  
Ruth & Ed Feldman  
Caren Fendrick<sup>^</sup>  
Food Bank of South Jersey Inc.  
Forman Family Foundation  
Donna & Rick Forman

### \$50,000+

#### King David Society

Anonymous  
Aleph Home Care  
Camden County Board of Commissioners

Fox Rothschild LLP  
Judy Franken<sup>^</sup>  
Michael Freedman  
Freedom Mortgage Corp.  
Friends of Israel  
Gladfelter Family Endowment Funds<sup>^</sup>  
Stacey & Jon Gelman  
Gerald B. Shreiber Foundation  
Lori & Rick Goldstein<sup>^</sup>  
Joyce & H. William Greenberg  
Sara-ellen & Alan Greenberg<sup>^</sup>  
Joan Grossberg  
Harold Grinspoon Foundation  
Healthcare Quality Strategies Foundation  
HQSI  
Jewish Women's Foundation Endowment Fund<sup>^</sup>  
Joseph & Esther Milgrim Endowment Fund<sup>^</sup>  
Kaminer Financial Group, Ltd.  
Sandra & Arnold Kaminer<sup>^</sup>  
Amanda & Adam Kaminer<sup>^</sup>  
Amy & Barney Kaplan<sup>^</sup>  
Alison Bell Keim & Andrew Keim<sup>^</sup>  
Kramer Beverage  
Heather & Mark Kramer<sup>^</sup>  
Nicole & Adam Landau  
Ellen & Michael Lowenberger  
Marlton Pediatrics  
Morgan Law LLC  
Suzanne & Ken Morgan  
Howard Needleman  
The Novak Family Fund  
OceanFirst Foundation  
Odell Studner Group  
Robert Odell  
Lisa & Brett Studner  
Office of Faith Based Initiatives  
Emily & Howard Orel  
Parkinson's Foundation  
Marsha & Marvin Raab<sup>^</sup>  
Rothkoff Law Group  
Erica & Jerold Rothkoff  
Joachim & Gerrie Rudoler  
Sharon & Adam Sackstein<sup>^</sup>  
Nora & Marty Salzman  
Samaritan Healthcare & Hospice  
Sydria & Scott Schaffer<sup>^</sup>  
Arlene & Norman Silvers<sup>^</sup>  
Allison & David Snyder<sup>^</sup>  
South Jersey Radiology Association  
Tami & Morris Starkman  
TD Bank  
Team Builders Plus  
The Horizon Foundation for New Jersey  
The Martin & Nora Salzman Foundation  
The Miller Family Foundation  
Ann & Bernie Miller  
Townsend Press, Inc.  
John Langan & Judith Nadell  
BB&T Bank  
Valerie Gladfelter JFCS Family Case Manager Endowment Fund<sup>^</sup>  
Judy & Leonard Wizmur<sup>^</sup>  
Andrew & Rebecca Wynne  
Valerie & Michael Yasner

**\$5,000+**  
**Menorah/Lion of Judah**  
215 Marketing  
Ruth & Jeffrey Abrams  
Adler's Pharmacy LTC, Inc.  
Pamela & Mark Adler  
Advocate Marlton Pediatrics  
Linda & Steve Angstreich<sup>^</sup>  
Janice & Jerry Apple  
Apple Physical Therapy, LLC  
Nikki & Adam David<sup>^</sup>  
Applegreen  
Auto Lenders Liquidation Center, Inc.  
Sue & Eric Baelen  
Beacon Food for the Hungry<sup>^</sup>  
Gail & Robert Belfer  
Pam & Bob Benedon<sup>^</sup>  
Berkadia  
Liz Baim & Sam Bierig  
Kimberly & Jeffrey Blackman  
Ilene & Richard Bomze  
Ronit & Chris Boyd<sup>^</sup>  
Caryn & David Bross<sup>^</sup>  
Cherry Hill Motors  
Roma Bank Community Foundation  
Amy & Eric Clayman<sup>^</sup>  
Anat & Adam Cohen  
Harv Cohen<sup>^</sup>  
Marcia & Arnie Cohen  
Kim & Jacob Cohn  
Congregation Beth El<sup>^</sup>  
Jodi Kaufman Cooper & Stanley Cooper<sup>^</sup>  
Margie & Mark Dannenbaum<sup>^</sup>  
Amy & Rob Darefsky  
DeSimone Construction  
Ceil & Kolman Diamond<sup>^</sup>  
Scott Dorfner  
June & Steve Eisner<sup>^</sup>  
Joan Feinberg  
Jennifer & David Fleisher  
Phyllis & Neal Flomenberg  
Bonnie Friedman<sup>^</sup>  
Gold Gerstein Group  
Arlene & Ed Plasky<sup>^</sup>  
Friedman Realty Group Inc.  
Glenn Fuhrman<sup>^</sup>  
Elaine & Barry Galman  
Nancy & Fredric Ginsberg  
Valerie & David Gladfelter<sup>^</sup>  
ACE fund of Richard Goodwin<sup>^</sup>  
H. Barton Greenspan  
Ilene & Harry Grossman  
Myra & David Gutin<sup>^</sup>  
Raechel & Michael Hammer  
Lil & Joe Hassman  
Robyn & Michael Hirsch  
Beth & K.C. Isdane<sup>^</sup>  
Barbara & Mark Jacobs  
Jewish Federation of North America  
ACE Fund of Jfed SNJ (AJA Fund)<sup>^</sup>  
Jerome Katz<sup>^</sup>  
The Katz Foundation  
Harriet Kleiman  
Kobolak Custom Cabinetry  
Kosher Mart Sales  
Jane Kramer  
Stephanie & Aaron Krause  
The Landenberger Family Foundation  
Olga & Scott Lerner<sup>^</sup>  
Andi & Neil Levin<sup>^</sup>  
Jodi & Neil Levine<sup>^</sup>

Becky & Warren Levy  
Lexie Kardon & Ron Lieberman  
Carol Lupo & Jon Beyer<sup>^</sup>  
M & T Bank  
Martine, Katz Scanlon & Schimmel Family Law  
Shira & Brian Scanlon<sup>^^</sup>  
Susan & Ian Meklinsky<sup>^</sup>  
Carol & Don Meltzer  
Meridian Counseling Services, LLC  
Judie & Harry Morrow<sup>^</sup>  
The Morrow Foundation  
New Jersey Commission on Holocaust Education  
ACE Fund of Robert & Marjorie Paul<sup>^</sup>  
PCM Bakeware Coating Systems  
Nancy & Robert Perilstein  
Sandy & Jack Piccininni  
Barbara & Bob Pick  
Rita & Alan Polonsky  
Prime Electrical Services  
Abbey & David Gancz  
Princeton Hosted Solutions  
Brad Bono  
Frani & Don Rebhun<sup>^</sup>  
Redstone American Grill  
Bonnie Rosenberg  
Lauren & Robert Rosenfeld  
Gerri & Art Rudner<sup>^</sup>  
Ivan Rudolph<sup>^</sup>  
Judy Ruffenberg  
Marcy Sanders<sup>^</sup>  
Scholler Foundation  
Betsy & Bob Schwartz  
Segal & Iyer Orthodontics  
Elana & Ross Segal  
Steven Shapiro  
Sidney Kimmel Cancer Center  
Geraldine & Ira Smith  
Janine & Mark Sobel<sup>^</sup>  
Sodexo  
Barbara & Jake Spigelman  
Florence & Thomas Stein  
Stevens International  
Surety Title Corporation  
Taylor Made Custom Cabinetry, Inc.  
Temple Beth Shalom Sisterhood  
D Olier Foundation  
The Funplex  
Cardiovascular Associates  
The Philanthropic-Klein-Schaffer Fund<sup>^</sup>  
Truist  
Universal Technical Resource Services, Inc.  
Rehab Connection  
Joanne & Gary Wachman  
WAWA  
JoAnn & Howard Waxman  
Laura & Alan Wechsler<sup>^</sup>  
Cookie & Allan Weinberg  
Lori & Jonathan Winter  
Beth & Craig Wynne  
Sally & Andrew Zeiberg<sup>^</sup>  
Joann Mower & Sandy Zeller  
ACE Fund of Julius & Rosetta Zinman<sup>^</sup>

**\$3,600+**  
**Star of David**  
Anonymous (3)  
Jennifer & Jeffrey Apell  
Amy & Andrew Blackstone  
Lisa & Scott Braunstein  
Rosanne & Howard Cetel

Joy & Andy Cohen<sup>^</sup>  
Congregation Kol Ami<sup>^</sup>  
Gail & Richard Donner<sup>^</sup>  
Barbara & Albert Dragon  
Eileen & Robert Elias<sup>^</sup>  
Elite Landscaping  
Dave Feast  
Fannie & Meyer Adleman Family Endowment<sup>^</sup>  
Focus HVAC  
Holly & Howard Friedman<sup>^</sup>  
Fran & Marc Gelman  
Ann-Linn Glaser  
Michele & Curt Golkow<sup>^</sup>  
Michael Greenspun  
Melissa & Kevin Harris  
Jamie Dollinger & Robert Hirsch<sup>^</sup>  
Debbie & Edward Hochberg<sup>^</sup>  
Carolyn Jacobs<sup>^</sup>  
Jerome R. Schwartz Donor Advised Fund  
Lindsey & Michael Klein  
Christine & Richard Kuball  
Rachel & Stephen Miller<sup>^</sup>  
David Ostrum  
Alise & Ken Panitch<sup>^</sup>  
Marcy & Michael Partnow<sup>^</sup>  
Nancy Pearl  
Reconstructive Orthopedics  
Jamie & Jesse Richman<sup>^</sup>  
ACE Fund of Marguerite Rosner<sup>^</sup>  
Anita Rothstein  
Ivy & Eric Rovner  
Sharon & Jay Ruder  
Susan & David Rush  
Safety Bus  
Jim Dugan  
Sandra Feldman Lion of Judah Endowment Fund<sup>^</sup>  
Naomi & Barry Schimmer<sup>^</sup>  
Clara & Larry Schreiber<sup>^</sup>  
Allison & Scott Schulman  
Scrub Daddy, Inc.  
Seed The Dream Foundation  
Meri & Scott Seligman  
Jennifer & Brett Sholder<sup>^</sup>  
Michele & Peter Sloane  
Tema Steele<sup>^</sup>  
Christine & Lewis Steiner  
Barbara & Howard Strosberg  
Wegman's Supermarket

**\$1,800+**  
**Chai Society/Pomegranate**  
Anonymous (7)  
Barbara & Stew Abrams  
Suzi & JD Abrams  
Jane & Rabbi Richard Address<sup>^</sup>  
Betty Adler<sup>^</sup>  
Shelley Adler  
Marylee & Stuart Alperin<sup>^</sup>  
Annette & Ira Fine Foundation  
Susan & Jonathan Anolik  
Samuel Asbell  
Evelyn & Eugene Bass JFCS Endowment Fund<sup>^</sup>  
Barbara & Mark Barrish  
Jacqueline & Steven Baumgarten  
Jennifer & Andy Bender  
Celestine & Jeffrey Berg<sup>^</sup>  
Arielle & Adrian Berger-Ettenson  
Evelyn & Alan Berkowitz  
Gail & Mark Berman  
Bobbi & Larry Bernstein<sup>^</sup>  
ACE Fund of Irene Bobis<sup>^</sup>  
Hazzan Alisa Pomerantz-Boro & Stephen Boro<sup>^</sup>

Bowman & Company LLP  
Ruth & Jeff Brenner  
Helene & Saul Bresalier  
Sherri & Alan Breslow  
Michelle & David Brill  
Linda Burkett  
Maxine & David Butler  
Capital Developers, LLC  
Karen & Rusty Cassway  
Cherry Hill B'rith Shalom Lodge 966  
Citrin Cooperman Advisors, LLC  
Cantor Jen Cohen<sup>^</sup>  
Janis & Roy Cohen  
Myrna & Larry Cohen  
Stefanie & Steven Cohen<sup>^</sup>  
The Creative Print Group, Inc.  
Peggy & Rabbi Jerome David  
Jody & Lee Dembo  
Ina & Herbert Deutsch  
Dovlin Enterprises Inc.  
Dana & David Dunkelmann  
Susan & Bruce Eisenberg  
Karin Elks & Steve Weinstein  
Lisa & Jeff Enda  
Envoy Business Advocate  
Nanci & Michael Epstein  
Michele & Joel Ettlinger  
Stacy Lewin Farber & Dan Farber  
Reva & Jeff Farenback-Brateman  
Shirley & Jim Feigenbaum<sup>^</sup>  
Nikki\* & Leonard Feldman  
Fuzzy Fendrick  
Caryn & Howard Fienman  
Annette Fine  
Debbie & Allen Fineberg  
Harvey Flaxman  
Carol & Joel Fleisher  
Fox Rehabilitation  
Ashley Freedman  
Susan & Steven Freiberg  
Cora & Mitchell Fuhrman  
Robert Gatenby  
Jana Caras Gelernt & Mark Gelernt  
Robyn Greenberg-Gelernt & William Gelernt  
Jennifer & Michael Gerstein  
Debra & Sanford Gips  
Glenmede Trust Company, N.A.  
Michele Goldstein  
Samuel Goldstein  
Sharon & Charles Goldstein  
Barbara Goodfriend<sup>^</sup>  
Donna & Gary Green  
Kimberly Kalitan-Greenberg & Adam Greenberg  
Marlene & Robert Greenberg<sup>^</sup>  
Jane & Robert Gumnit  
Jill & Geoffrey Hammel  
Hangley Aronchick Segal & Pudlin  
Lori & Rick Goldstein<sup>^</sup>  
Marci & Jason Levine<sup>^</sup>  
Judy & Steven Herzberg  
Leni & Murray Honig  
Jill & David Hulnick  
Shari & Carl Hyder  
Dawnna & Marc Isdane  
Linda & Leonard Jacobs  
Marlene & Bernard Jacobs  
Jewish Federation of Greater MetroWest NJ  
Carol & Richard Josselson  
Susan & Joel Kaber  
Suzanne & Richard Kahn  
Sharla & Mort Kanovsky<sup>^</sup>  
Gloria & Sheldon Kerner



Cheryl & John Kirby  
 Adeline Schultz & James Klein  
 Rachel & Steven Klein  
 Deborah Shore^ &  
 Jonathan Korn  
 Jacqueline & Phillip Koren  
 ACE Fund of Harry Krotman^  
 Rachel & Fred Kurz^  
 Robin Sue & Bill Landsburg^  
 Nina Cohen & Karl Lane^  
 Rice Elder Law  
 Legacy Advisors, LLC  
 Helena & Norman Lehrer  
 Benjamin Levin  
 Lynne & Andy Levin  
 Julie & Scott Levine  
 Marci & Jason Levine^  
 Lichtman Assoc Real Estate  
 Sandi & Joe Lichtman^  
 Life Force Caregivers for  
 the Elderly  
 Jane & Rabbi Steven  
 Lindemann^  
 Gail Lipsky  
 Louis N. Cassett Foundation  
 Suzanne & Allan Magaziner^  
 Andi & Jay Malamut  
 Brenda & Richard Mandel  
 Mona & Scott Marcus  
 Linda & Hank Maurer^  
 Margery & Kenneth Maurer  
 McKesson  
 Janet & Howard Mendel  
 Faye & Barry Mertz  
 Marci & Nick Meyers  
 Ellen & Brad Molotsky^  
 Morgan Stanley Smith Barney, LLC  
 Renee & Jim Nachbar^  
 NJM Insurance Group  
 Jackie & Charles Nusbbaum  
 Margo & Alan Orlin  
 Rachel Zivic &  
 Rabbi Micah Peltz^  
 Katherine & Michael Perloff  
 Roberta & Joel Porter  
 Ernest Post  
 Jocelyn Perkin Price & Alec Price  
 Proforma Mackay Print &  
 Promotions  
 Tiffany & Victor Mogell  
 Beth & Joseph Reichman  
 Stacy & Michael Reiter  
 Richard B. Charny JCC Camps  
 Endowment Fund^  
 Samantha & Ian Richman  
 Robert & Marjorie Paul Family  
 Endowment Fund^  
 Karen & Joel Rosen  
 Caryn & Leon Rosenberg  
 Mindy & Ben Rosenblum^  
 Ilene Rosen & Todd Rowan^  
 Sandra Dezenhall Memorial  
 Fund^  
 Mindy & Michael Schorr  
 Harriet Schulman^  
 Sharon & Richard Schwab  
 Lew Schwarz  
 Amy & Dave Sclarsky  
 Sheila & Stephen Shaw  
 Rachel & Robert Shmuts  
 Kelly & Eric Shore  
 Wendy & Todd Silverberg  
 Mashi Simon  
 Sir Lancelott Courier & Delivery  
 Sis Levy Katz JCC Early  
 Childhood Center Scholarship  
 Endowment Fund^

Lauren & Jonathan Soll^  
 Special Needs Housing  
 Endowment Fund^  
 Fredda Sacharow &  
 Steve Stern^  
 Melanie & Eric Stoopler  
 Terri & Bruce Teitelbaum  
 Jeannie & Larry Teller  
 The Hughes Center for  
 Aesthetic Medicine  
 The Mansion  
 Staci & Craig Tinkelman  
 Miriam & Myles Turtz  
 USI Insurance Services, LLC  
 Marla & Mark Wander  
 Lynne & Diego Warszawski  
 Judy & Stuart Wasserlauf^  
 Ilene & Michael Weinberg  
 Marie & Andrew Weiner  
 Rabbi Nathan Weiner &  
 Samuel Warren^  
 Julie & Jason Whitney^  
 Ann & Daniel Wolf^  
 Liza & Danny Wolf  
 Stanley R. Wolfe Foundation  
 K.C. & Eli Wolfe  
 Cindy Yellin^  
 Young Adjustment Company  
 Karen & Allan Zarembski^  
 Zenith Insurance Company  
 Jodi & Mitchell Ziets  
 Lenard Zimmerman

#### **\$1,000+ Pacesetter**

Anonymous (8)  
 Akman Family Charity  
 MD Anderson  
 Pamela Anderson  
 Anthony Coffina Family  
 Memorial Fund  
 Lois Asbell  
 Atlas Wallpaper & Paint Co.  
 Amy & Seth Auerbach  
 Ann & Donald Auerbach  
 Iris & Steven Auerbach  
 Lori & Carl Bagell  
 Bancroft  
 Julie & Gregg Bannett  
 Debby Baratz  
 Vivian & Andrew Barnett^  
 Nancy & Robert Barsky  
 Ellen Bass  
 Jodi Berman & Yaniv Ben-Natan  
 Rebecca & Richard Berman  
 Tara & Michael Berman  
 Beth Israel Congregation  
 Jayne Feld Bloom &  
 Craig Bloom^  
 Ruth & Dick Bogutz^  
 Andrew Bondy  
 Barbara Borger  
 Jocelyn Borowsky^  
 Yvonne & Samuel Brand  
 Brendan J. Giblin Memorial  
 Fund  
 Randi & Howard Bresalier  
 Lois & David Bromberg  
 Jennifer & Ari Brooks  
 Byron Home, Inc.  
 Debbie Lisker &  
 Edward Chernoff  
 Cheri & Matthew Cohen  
 Donna & Douglas Cohen  
 Susan & Harvey Cohen  
 Comcast  
 Congregation Beth Tikvah^

Lisa & Mitchell Conn  
 Cecilia & Nicholas Connor  
 Cooper University Health Care  
 Lilly Cowan^  
 Leila & Adam Cupersmith^  
 Fay & Stanley David  
 Brenda & Marvin Delfiner  
 Grace Denbo  
 Marc Diamondstein  
 Fran & Alan Domers  
 Brenda & Chuck Driben  
 Rande Dubrow  
 Debi & Rabbi Ephraim Epstein^  
 Gail Trachtenberg &  
 Rabbi Lewis Eron  
 Justin Ettelson  
 Faith in Food  
 Joyce Feder  
 Stephanie & Jeffrey Fendrick  
 Floor Coverings International  
 Beth & Benjamin Folkman  
 Foundation Title  
 Jennifer & Michael Frankel  
 Judy Freedman  
 Linda Friedman^  
 Ellen Garber  
 Joel Gardner  
 Ron Gerson  
 Randi & Rich Gerstein  
 Elissa & Allan Ginsburg  
 Felice Ginsburg  
 Rose Glassberg  
 Linda & Jerry Goldkrantz  
 Jackie & Stuart Goldstein  
 Suzanne Goldstein  
 Goldsteins' Rosenberg's  
 Raphael Sacks  
 Arlene & Norman Goodman  
 Edith Green  
 Lauren & Phillip Green  
 Gloria Greenberg  
 Susan & Sidney Greenwald  
 Cindi & Yakir Hasit^  
 Ruth & Paul Herron  
 Linda Hofman  
 Simone & Lew Holtzman  
 Dana Ovadia & Ben Honig  
 Susan & Harry Horwitz  
 Huntington Learning Center  
 Rosie Hymerling  
 Ilkem Marble & Granite, Inc.  
 Isaac & Sofia Greenberg  
 Memorial Endowment Fund^  
 Kathy & Michael Jacobs  
 JAG ONE PT Administrative  
 Services  
 Jewish Community Center of  
 Staten Island, Inc.  
 Zelda Joffe  
 Sherri & Howard Jonas  
 Eric Jones  
 Barbara Kanalstein  
 Carol & Howard Katz  
 Joann Kay  
 Erica & Richard King  
 Kitchen & Associates  
 Donna & Joseph Kornbleuth  
 Debra & Daniel Kramer^  
 Jill & Jeffrey Kraus  
 Gladys & Stephen Krulik  
 Maxine & Edwin Ladov  
 Cheryl & David Lebowitz  
 Ryan Lehrfeld  
 Jamie & Adam Levine  
 Sue & Howard Levine^  
 ACE Fund of Sis Levy^  
 Marlene Levy

Renee Rudolph &  
 David Lieberman  
 Allison & Jeremy Lindemann  
 Shelly & Charles Lobel  
 Andi Loew  
 Lonnie Cohen Memorial  
 Scholarship Fund  
 Dinie & Rabbi Mendel Mangel  
 The Manny & Ruthy Cohen  
 Foundation  
 Joan Martin  
 Wendy Martinez  
 Bruce Matez^  
 Shoshana & Edward Melman  
 Joseph Meltzer  
 Jeremy Messler Photography, LLC  
 Robert Meyer  
 Microsoft Matching Gifts  
 Program  
 David Milberg  
 Andrea & Marc Millstein  
 Pnina & Mark Mintz^  
 Janet & Jay Mintzer  
 Randee & Alan Moldoff  
 Monroe Township Board of  
 Education  
 Multi Housing Depot  
 Donna & Ehud Nahum  
 Krista & Jeffrey Nash  
 Libby Neuman  
 Phyllis Odessey  
 Susan & David Olinsky^  
 Eveline & Herbert Panitch  
 Jackie & William Pearson  
 Pennrose  
 Eileen & Sal Perice  
 Shirley & Richard Perkins  
 Lori & Michael Phillips  
 Politz Day School  
 Laurel & David Portnoe^  
 Hope & Michael Proper  
 Prosthodontics at Marlton  
 Crossing  
 PSE&G Foundation  
 Cheryl & Alan Raskas  
 Raymond James Commercial &  
 Industrial Building Services of  
 South Jersey, LLC  
 Minna Recht^  
 Erica & Josh Reisman^  
 Revive Spine & Pain Center  
 Ron Lapides Interiors  
 Jan & Steven Rood-Ojalvo  
 Nancy & Fred Rosen  
 Pam & Scott Rosenberg  
 Carol & Jeff Roth^  
 Rabbi Bernard Rothman  
 Shirley & Mort Rubinstein  
 Leslie & Steve Sacharow  
 Sage Financial Group  
 Melanie & David Samuels  
 Tracy & Rick Schwartz  
 Schwartz Financial Associates  
 Pauline & David Schwarz  
 Cheryl & Chuck Scott  
 SEI Investments Company  
 Robin & Jeff Shacket  
 Faye & Gary Shapiro^  
 Carole Siegel  
 Michael Silver^  
 Heidi & Danny Silverberg  
 Richard Simon^  
 Dotti & Aaron Singer  
 Sharon & Alan Singer  
 Sis Levy Katz JCC ACHaD  
 Endowment Fund^

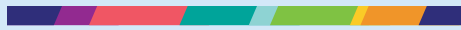
Jessica & Justin Skolnick  
 Adrienne Hollander &  
 Brian Smith  
 Jim Soffer^  
 Joyce & David Soowal  
 South Jersey Men's Club  
 Ellen & Dean Spear  
 Spiezle Architectural Group, Inc.  
 Judith & Ted Spivak  
 Sarah Kaplan & Jason Springer^  
 State Street Bank  
 Lisa & Scott Stegall  
 Judy & Edgar Stein  
 Vicki & Albert Stein  
 Renee & Saul Steinberg^  
 Miriam Stern & Beth Taubman  
 Cindy & Eric Stevens^  
 Patti & Randy Stilman  
 Gretchen & Paul Stolpen^  
 Ronda Stonick  
 Randi & Craig Stoopler^  
 Susquehanna International  
 Group  
 Michele & Barry Susson  
 Risa Swell  
 Sharon & Ely Swerdlin  
 Michele Reiss-Taylor &  
 Alan Taylor  
 The Drew A. Katz Foundation  
 Sydney & Carl Tinkelman  
 Eva Vlesing  
 Barbara & Joseph Walkes  
 Barbara & Marvin Waxman  
 Missy & Adam Wayne^  
 Denise & Stephen Weinberg  
 Sheila & Herb Weiner  
 Richard Weiss  
 Janice & Martin Wilensky  
 Dina Wismur  
 Women's Group for OB/GYN  
 Deena & Dave Worrell  
 Susan Yermish  
 Marsha & Len Yorinks^  
 Shari & Seth Young  
 Sarah & David Zalcman  
 Sarah & Ron Zanger^  
 Leslie & Mark Zaontz  
 Jeff Zeiger^  
 Jennifer & Ralph Zonies  
 Suzy & Jeff Zucker

^ JCF Life & Legacy® /  
 Endowment Fund  
 Holder

\* Of blessed memory

List as of 10/4/23

Fiscal year is  
 10/01/22 - 9/30/23



2022 – 2023

# Board of Directors

## OFFICERS

Edward Rivkin  
*President*

Ivy Brown Rovner  
*Vice President & President-Elect*

Missy Wayne  
*Vice President*

Harry Platt  
*Immediate Past President*

Shira Katz Scanlon  
*Vice President*

Jennifer Dubrow Weiss  
*Secretary &  
Chief Executive Officer*

Caroline Austin  
*Vice President*

Scott Schulman  
*Vice President*

## MEMBERS

Arthur Abramowitz

Betty S. Adler

Jeffrey Apell

Josh Aronovitch

Robert M. Benedon

Jodi Berman

Harv Cohen

Jamie Dollinger

Robert Elias

Karin Elkis

Stacy Lewin Farber

Glenn Fuhrman

Richard J. Goldstein

Michele Golkow

Jeffrey Gottlieb

Harry Horwitz

David Hulnick

K.C. Isdaner

Rabbi Yitzchok Kahan

Adam Kaminer

Rachel Snyder Klein

Dan Kukainis

Andi Levin

Andy Levin

Neil Levin

Stacy Asbell Levin

Jason Levine

Rabbi Steven Lindemann

David Ostrum

Barbara W. Pick

Scott Raskas

Jeffrey Resnick

Mark R. Rosen

Barbara Rothberg

Harriet Schulman

Robert E. Schwartz

Harvey Shapiro

Mark Shapiro

Alison Platt-Tarnopol

Brian Zell

## INVITEES

Scott Seligman

Vicki Zell

## SOLICITOR

Robert E. Schwartz, Esq.



# JFSNJ Staff

## CHIEF EXECUTIVE OFFICER, JFSNJ & JCF

Jennifer Dubrow Weiss

## SENIOR MANAGEMENT

Ronit Boyd  
Chief Impact & Innovation Officer

Robyn Kaplan  
Executive Director of Older Adults

Maribell Osnayo-Lytle  
Chief Human Resources Officer

Karen Bray-Pollak  
Chief Culture & People Officer

Rob Kiewe  
Chief Operating Officer &  
JCP Executive Director

Sarah Rowland  
Director of Administration

Amy Clayman  
Chief Financial Officer

William “Bud” Monaghan  
Executive Director  
of JFed Security, LLC

David Snyder  
Chief Advancement Officer  
& JCF Director

Stephanie Dworkin  
Chief Marketing Officer

## STAFF

Xiomara Alicea  
LaSerena Anderson  
Maria Andrianos  
Morgen-Ashlee Backus  
Moriah Benjoseph Nassau  
David Bielli  
Kristina Bowen  
Julie Calem  
Nancy Caporusso  
Chimene DeJesus  
Barbara Dillenschneider  
Mackenzie DiVite  
Rodney Dixon  
Jamie Driggers  
Rabbi Ephraim Epstein  
Nanci Epstein  
Rachel Gaitan  
Gina Galiano  
Brandy Gauthier  
Andi Goldman

Jennifer Goodman  
Sathya Gopalakrishnan  
Christine Gray  
Kristen Gunderson  
Janet Harmelin  
Trish Henrich  
Kameelah Holden  
Stephanie Hoskins  
Cindy Jacobson  
Christian Javier-Jimenez  
Doris Jones  
Kayla Jones  
Susan Josephson  
Sarah Kaplan  
LaKeya King  
Stephen Kofsky  
Elizabeth LeBron  
Ashley Lees  
Melissa Leibowitz  
Heaven Listman

Maritza Mannino  
Alina Mayo  
Elizabeth McKibben  
Amanda Michelson  
John Moyer  
Shereeta Nelson  
Dana Nitulescu  
Michael Ostermueller  
Sean Redmond  
Adam Roth  
Marnie Rubenstein  
Lauren Robinson  
Janet Santo  
Jonathan Sinay  
Iris Snyder  
Elizabeth Spahr  
Judith Spillane  
Michael Staff  
Lana Sudakova  
Judy Szymczak

Ronni Trainor  
Stacey Unterlack  
Dana Vann  
Pamela Vannoni  
Anna Wachspress  
Rabbi Nathan Weiner  
David Weir  
Marcy Weitz  
Colleen Wikiera  
Barbra Wilen  
Sheraune Witcher  
Leah Wolf  
Maddie Wolf  
Avital Zeffren  
Len Zimmerman

*As of 10/1/23*



# Jewish Federation of Southern New Jersey

& OUR FAMILY OF AGENCIES

THE **STRENGTH** OF A PEOPLE.  
THE **POWER** OF COMMUNITY.



## Katz Jewish Community Center (JCC)

Promotes and enriches Jewish culture, heritage, values, and lives by providing outstanding educational, social, and health and wellness programs and experiences to the community.



## Jewish Community Relations Council (JCRC)

The voice of the Jewish Federation on issues of public policy, social advocacy, and community outreach.



## Jewish Community Voice (JCV)

Informs and educates the South Jersey community about events locally, in Israel, and around the world.



## Samost Jewish Family & Children's Service (JFCS)

Brings help and hope to those in need through a comprehensive array of social services – services for seniors and individuals with special needs and their families, counseling, family assistance, and food pantries.



## Jewish Senior Housing and Healthcare Service (JSHHS)

Provides the benefits of quality housing and compassionate healthcare services to senior residents and their families.



## Jewish Community Foundation, Inc. (JCF)

A supporting organization of the Jewish Federation, providing planned giving and endowment funds, donor advised funds, and legacy giving services, as well as financial scholarship awards and grants for organizations serving the community.



## Jewish Community Properties (JCP)

Acquires, owns, operates, and manages real estate on behalf of the Jewish Federation.



## JFed Security, LLC

A community security initiative which provides tailored security services and expertise to ensure the safety of the Jewish community throughout New Jersey and Delaware.

## NATIONAL & OVERSEAS PARTNERS

The American Jewish  
Joint Distribution  
Committee (JDC)

The Jewish Agency  
for Israel (JAFI)

The Jewish Federations  
of North America (JFNA)

World ORT

856.751.9500 | [jewishsouthjersey.org](http://jewishsouthjersey.org)

Main Office  
Harold R. Isdaner Building | Weinberg Jewish Community Campus  
1301 Springdale Road, Suite 200 | Cherry Hill, NJ 08003

Weinberg Commons  
1711 Springdale Road | Cherry Hill, NJ 08003