

**Your Federation annual campaign contribution helps make all of this possible.**

## PROVIDING *Crisis Relief* HELP WHERE IT'S NEEDED

### Ukraine

Thanks to you, Jewish Federations has raised over \$85M for Ukraine to deliver humanitarian aid and help those who are fleeing to other countries.

### Hurricanes, Tsunamis, Tornadoes & Earthquakes

Turkey, Syria, Mexico City, Haiti, Florida, Texas, New York

When disaster hits, JFNA (Jewish Federations of North America), local Federations, and overseas partners Jewish Agency for Israel and JDC mobilize to provide food, clothing, shelter, rescue, food, medicine and volunteer mobilization.

### Community Security

Pittsburgh, Poway, Colleyville & Jewish communities across the US

When antisemitism threatens, SCN (Secure Community Network), a partner organization of JFNA, is on the ground serving as liaison between local law enforcement and also serves as the resource to Federation for community security-related issues every day.

### Covid

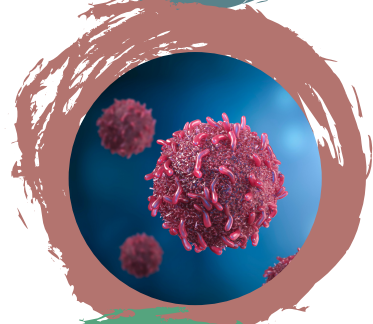
Jewish Federations of North America launched a \$54M Human Services Relief Fund to support Jewish communities affected by the coronavirus epidemic.

### Ethiopia

97,000 Ethiopian Jews and their families made Aliyah to Israel over decades – starting with Operation Moses in the 1980s and Operation Solomon in the 1990's. In 2020 and 2021, Operation Tzur Israel brought 2,150 Ethiopian Jews to Israel, followed in 2022 by 3,000. There are nearly 160,000 Ethiopian Israelis.

*"What you are doing . . . makes a big difference in people's lives. Real people like my father and me. Real people like thousands of Ukrainians whose lives you are saving. Real people like in Turkey or anywhere in the world whose lives you touch."*

- Tatyana Elliott, Peoria, IL, speaker at 2022 Federation campaign event, whose father Mykailo Sultanov, an 87-year-old Holocaust survivor, was rescued from Ukraine by Federation through JFNA overseas partner, JDC.



---

# MESSAGE

## From the President



It's March, it's Adar, it's Purim. That Holiday where we are commanded to celebrate until we can't tell the difference between Mordecai and Haman. It's a day of costumes, masks, noisemakers, and parades. A Jewish Mardi Gras and Halloween rolled into one. All we're missing are the beads.

We all remember the basic story. A tale of a heroine and a villain, with appropriate supporting cast. The Hebrew word for hero is "gee-bor," usually translated as "mighty." The Collins English Dictionary defines "hero" as a "person of distinguished courage or ability, admired for brave deeds and noble qualities." That certainly defines the heroine of our story, Esther (or if you prefer Hadassah). She details the plot planned by Haman to destroy the Jewish population of Persia, pleading for her life and the lives of her people. It

certainly took a great deal of courage to go unannounced and uninvited to the chambers of King Ahashverosh. And, as we know, Haman and his sons suffer the fate he planned for the Jewish people.

The Hebrew word for villain is "rasha," it's the word applied to Haman in the Purim story. According to the Collins English Dictionary, "villain" is defined as a "wicked or unprincipled character who opposes the hero." That's Haman. According to tradition, Haman is descended from the Amalekites, the ancient enemies of Israel.

Did this story occur, we can never know. However, there must have been some basis for it to be included in the final organization of the Bible, especially since there is no reference to God.

Can anything about the Purim tale relate to today? Yes, because each of us, in our own way is a hero. When you write a check or make a pledge to Federation, Hadassah, B'nai Brith, ORT, HIAS, ADL, JDC or another worthy organization, you are fighting hunger, aiding refugees, helping to educate a child, or fighting ignorance and hate, you are adding your name to the Pantheon of Jewish Heroes.

And finally, remember the old saying, "They tried to kill us, we won, Let's Eat!

Chag Semach, have a Happy and Joyous Purim.

P.S. One final note, for the past few months you've been reading my thoughts, now, it's turn-around time. Passover is next month. We'd love to hear your favorite Holiday memories, Seder dinners, favorite foods, or what the Holiday means to you. Send us a brief note.

Springfield's recurring social and educational series for active retirees .

# Knosh & Knowledge

---

March 29, 2023 9:30-10:30 AM

## Tour of Illinois State Military Museum

1301 N. MacArthur Blvd.  
Springfield, Illinois



RSVP by Mon., March 27,  
to (217) 787-7223 x 18  
or [rsvp@shalomspringfield.org](mailto:rsvp@shalomspringfield.org)

# *Save the Date*

## GALA WINE TASTING

APRIL 29, 2023

6 pm

MALDANER'S

More Info to Follow.

If the Federation can assist you in any way, if you have questions or concerns, or are in need of financial or social service assistance, please contact Nancy Sage, Executive Director, at (217)787-7223, ext. 12. All calls are confidential, and your privacy will be respected.



# A YEAR OF IMPACT IN UKRAINE

**\$85 million raised**  
**\$250,000 a day**

While bombs fly overhead in one part of the world, Jews nearly 5,000 miles away began advocating and raising tens of millions of dollars within weeks to support the Ukrainian community.

It's moments like this that we are reminded of the power of our community.

## OUR WORK IN NUMBERS

**500,000** People received humanitarian assistance, relief or support

**4,000** Medical and mental health professionals trained

**700,000** Meals distributed

**130,000** Received medical care

**65,000** People supported in making aliyah

**180,000** Ukrainian newcomers supported by our advocacy

**WE DIDN'T SPRING INTO ACTION THE DAY THE WAR IN UKRAINE BROKE OUT ...**

# **WE'VE ALWAYS BEEN THERE.**


We work year round building community in more than 70 countries so in moments of calm we see Jewish life flourish, and in moments of crisis we are ready to mobilize. And while we know there is more to do, in this moment we look back and thank you.

# You save lives and change lives.

WHAT IF YOU COULD REACH across the world and touch a life? Well, you can. Right now, through your gift to the Jewish Federation of Springfield.

- You can reach out from your kitchen into the all but empty kitchen of an elderly couple, trapped in their home, in Ukraine. You can bring Jews from Ethiopia to Israel.
- You can support victims of terror in Israel as they rebuild their homes and their lives. In Eastern Europe you can help a new generation to rebuild Jewish communities that were all decimated by the Holocaust and Soviet rule.
- You can support our Senior program and all that it provides, JCRC endeavors like Healthy Food Distributions, Education and Culture programs including the film series.
- You can provide support for those in need in our Jewish community in Springfield.
- You can secure our community through our partnership with the Secure Community Network.
- You can help Federation serve our Jewish community.

If you haven't already, please make your pledge today to the 2022 Jewish Federation of Springfield Annual Campaign. If you have already pledged, thank you.

		<b>2022 Annual Campaign</b>	
I hereby pledge to support the Annual Campaign with a gift of \$_____			
_____ Signature		_____ E-mail (please print clearly)	
_____ Date	_____ Cell phone #	_____ Solicitor	
I will pay by check ____ by credit card ____			
Online at <a href="http://www.shalomspringfield.org">www.shalomspringfield.org</a> ____			
Monthly ____ Quarterly ____ Semi-Annually ____ Annually ____			
<input type="text"/>	<input type="text"/>	<input type="text"/>	
Gift 1 year ago	Gift 2 years ago	Gift 3 years ago	

# MARCH 2023

			1	2	3	4
			12 pm TBS Lunch 'N Learn <b>7:30 pm Fed Bd Mtg</b>	5:30 pm TBS Intro to Judaism	5:30 pm TBS Shabbat Service 6 pm TI Zoom Shabbat Service	9:30 am TI Service 10 am TBS Torah Study 10:30 am Chabad Service
5	6	7	8	9	10	11
9:30 am Religious School 9:30 am Chabad Tefillin Club 2 pm Chabad Women's Torah Class	TBS Purim TI Purim	5 pm Chabad Purim party <b>Purim</b>	12 pm TBS Lunch 'N Learn 4:30 pm TI S'Hd @ Erin's Pavillion 7 pm Hadassah Bd Mtg	5:30 pm TBS Intro to Judaism 7 pm TI Bd Mtg	5:30 pm TBS Shabbat Service & Dinner 6 pm TI Shabbat Service	9:30 am TI Service 10 am TBS Torah Study 10:30 am Chabad Service
12	13	14	15	16	17	18
9:30 am Religious School <b>10 am Fed PJ Library Get Together</b> 12 pm TBS S'Hd Mtg 2 pm TBS Exec Bd Mtg		1 pm TI S'Hd Book Club 2 pm TI S'Hd Exec Mtg	12 pm TBS Lunch 'N Learn	5:30 pm TBS Intro to Judaism <b>7:30 pm Fed JCRC Mtg</b>	6 pm TI Shabbat Service 6 pm TBS Shabbat Service	9:30 am TI Service 10 am TBS Torah Study 10:30 am Chabad Service
19	20	21	22	23	24	25
9:30 am Religious School 2 pm Chabad Women's Torah Study	7 pm Joint Temples Learn Together Holocaust Museum Speaker	6:30 pm SBJE Bd Mtg	12 pm TBS Lunch 'N Learn 7 pm Hadassah Gen Mtg.	5:30 pm TBS Intro to Judaism	6 pm TI Shabbat Service 6 pm TBS Shabbat Service	9:30 am TI Service 10 am TBS Torah Study 10:30 am Chabad Service
26	27	28	29	30	31	
9:30 am Religious School 2 pm Chabad Women's Torah Study		7 pm TBS Bd Mtg	<b>9:30 am Fed Knosh &amp; Knowledge</b> 12 pm TBS Lunch 'N Learn <b>12:10 pm Fed Exec. Committee Mtg.</b>	5:30 pm TBS Intro to Judaism	<b>11 am Fed JCRC Healthy Foods Distribution</b> 6 pm TI Shabbat Service 6 pm TBS Rabin Twins Shabbat Service	

# Partnership2GETHER

---

By a nice coincidence, on February 16, 2023, JFNA presented a webinar on efforts to build a shared society in Israel. I'd say it's a nice coincidence because we in Springfield were exposed to such an effort last November through the visit of the Women Leading Dialogue delegation. As you recall, the delegation consisted of four Jewish women and four Muslim women from the Western Galilee region. These women had been meeting together for over a year before their visit to the United States. In their meetings they got to know each other as people whose backgrounds were different but who ultimately found that they had more in common than they could have imagined at the outset. Most importantly, was what we learned of their deep commitment to creating a shared society.

The webinar put our encounter with the Partnership2Gether's Women Leading Dialogue group into the context of organizations throughout Israel dedicated to the vision of fuller integration of Israeli Arabs into Israel's economy and culture. After all, according to background materials from the webinar, the Arab population of Israel constitutes 21% of Israeli society. Many organizations are involved in the efforts to achieve fuller integration of this group into Israeli society, and some have been at this work for many years. It's worth noting that over the years, much progress has been made, especially in terms of the development of a Arab middle class. For example, currently 25% of Israel's physicians, 24% of its nurses, and 47% of its pharmacists are Arabs. That said, as in the United States, economic inequality is a persistent problem.

It was heartening to learn that building a shared society in Israel is a core value of JFNA and that the 40 Partnerships throughout the world play a significant role in advancing that work. For those who would like to learn more about the study commissioned by JFNA to explore this issue, the webinar can be viewed at: <https://www.youtube.com/watch?v=yju5UmJLVaU>.

Harry Berman, *Partnership2GETHER chair*



**November 6-9, 2023**

Partnership2GETHER is celebrating our 25th anniversary in the Western Galilee.  
Contact Nancy Sage for Partnership Missions (travel) information.





Please Join us - Volunteer to Help  
Jewish Community Relations Council  
Healthy Foods Distributions

Interested? Please email [sjf@shalomspringfield.org](mailto:sjf@shalomspringfield.org)

JCRC sponsors several distributions throughout the year. Volunteer hours generally run from 10:30 am to 1:30 pm on Fridays.

The first of several distributions this year  
Friday, March 31st at 11:30 am at  
Temple Israel.

# GOLD SPONSOR

OUR LOCAL EXPERTS ARE YOUR  
LOCAL ADVANTAGE.



Member  
FDIC

**BOS**

[bankwithBOS.com](http://bankwithBOS.com)



# Time to think about camp!

## CAMPERSHIPS AVAILABLE

Camperships are now available for Jewish overnight camps through the Joni A. Wolfson Campership Fund. Please contact Nancy Sage at [nsage@shalomspringfield.org](mailto:nsage@shalomspringfield.org) to request an application today!



**About Camp Ben Frankel** Providing Lifelong Memories Since 1949  
FOR EVERY JEWISH CHILD, A PLACE TO BELONG.

Camp Ben Frankel's mission is to build a lifelong camp family for Jewish children from all backgrounds to explore their identities in an inclusive and welcoming environment, one amazing summer at a time.

**A REPUTATION FOR QUALITY.** At CBF we combine the wisdom of industry best-practices, decades of experienced leadership, strategic partnerships, and an open-minded approach to develop programs and activities that meet or exceed the high expectations of our campers, parents, and camp staff. Safety comes first and Camp Ben Frankel is proudly accredited by the American Camp Association (ACA).

In 2021 we reopened our in-person summer camp and ran successfully with zero cases of Covid.  
[www.campbenfrankel.org](http://www.campbenfrankel.org)



**A CAMP FOR EVERYONE!** Olin-Sang-Ruby Union Institute (OSRUI) is an open and safe Jewish community dedicated to welcoming and valuing every individual. Since 1952, we have welcomed tens of thousands of

campers to our community, creating memories and friendships that last a lifetime. Once you've spent a summer at OSRUI, you are a part of our camp family forever.

We recommit ourselves daily to growing this intentional camp community and tending to its roots: openness, inclusivity, sensitivity, Jewish tradition, and the belief that we are all B'tzelem Elohim – created in God's image. OSRUI is a place where each community member is safe, able to enjoy all that we have to offer, and have the opportunity to become the best versions of themselves.

[www.osrui.org](http://www.osrui.org)



With so many summer programs for kids available nowadays, we are committed to ensuring that Camp Chi is always exceptional. This starts with a strong foundation that distinguishes the Chi experience and is mindful about how to provide the best possible summer filled with outrageous fun and measurable growth for kids.

We believe everything that happens at Camp Chi, whether it is a big success or a seemingly small moment in time, presents an opportunity to provide exceptional care for campers. It's this philosophy that propels us to create an environment where each child can thrive socially and benefit from individualized support and attention. Our entire staff is committed to ensuring the physical safety, emotional stability and social well-being of all campers. This approach to Camper Care truly sets Camp Chi apart from other camps and children's programs. [www.campchi.jccchicago.org](http://www.campchi.jccchicago.org)

# SAGE NOTES



Nancy Sage  
Executive Director

As the saying goes, "Pictures are worth a 1,000 words." I hope that this month's Federation newsletter's front page illustrates the impact of your support, caring and ongoing generosity. Jewish Federation of Springfield, IL, albeit a small Federation, is part of the larger collective that includes Federations across North America and our overseas partners Jewish Agency for Israel, JDC, and ORT.

You build and power the underlying connections, infrastructure, and local emergency response capability in life threatening situations, whether war in Ukraine, earthquakes in Turkey and Syria, antisemitic incidents here and abroad, or tornadoes, floods, or other natural disasters. Your annual campaign contribution makes it possible to respond immediately to crisis situations. Your additional generosity to special requests for disaster relief helps fund the resources so necessary to save lives and provide food and shelter.

So, how does this emergency response work? The call to action begins in anticipation of or at the start of an unforeseen crisis situation. If in the US, the local Federation's role is to centralize communications for the Jewish community and to work with lead local organizations, so that the response is swift, accurate, and appropriate to the situation. In other words, Federation's role is to facilitate, to work together with Jewish organizational and local community leadership and to ensure the welfare and safety of those affected by mustering resources and expertise. In these situations, we would rely on Jewish Federations of North America (JFNA) and appropriate affiliated organizations such as SCN (Secure Community Network), the Jewish national security agency.

JFNA standard operating procedure is to contact the Executive Director for an assessment of the situation and a determination of how JFNA could help and support the community. For example, this could include opening a special emergency response mailbox for financial support, asking for volunteers to assist the community in crisis, or requesting the Israel Trauma Coalition to provide crisis counseling intervention and training services, and, if needed asking Israid for life saving search and rescue operations. SCN, in addition to providing information, training and consultation on a day-to-day basis, is present on the ground whenever there is a local incident, such as Pittsburgh, Poway, or Colleyville and serves as the liaison between law enforcement and the Jewish community. Ultimately, through JFNA's LiveSECURE program, we will share a regional Security Director with small Federations throughout the state to take charge of local Jewish security situations.

If the crisis occurs overseas, JFNA relies on Federations' overseas partners, JDC and Jewish Agency, to respond. JDC and Jewish Agency maintain an infrastructure that provides lifesaving food, medications, social services, and rebuilds and strengthens community life in 70 countries throughout the world. Our local Federation campaign supports JDC and Jewish Agency through our overseas dollars, appropriately termed our "core" overseas allocations. It is your support for the annual campaign that allows us, through our partners, to build flourishing Jewish communities on a day-to-day basis and to spring into action in crisis situations. We are grateful.

# Notes

## Pics From PJ Play Date



### MAZEL TOV

TO:

**Harry Berman**, for being honored by the UIS Alumni Association and presented with the 2023 Distinguished Service Award for 35 years of extraordinary commitment, dedication, and service.

### THANK YOU

**PJ Library:** Regan Marks and Kayla Morrison

### CONDOLENCES

WE MOURN THE PASSING OF:

Judith "Judy" Foster

May her memory endure as a blessing.

Shalom Springfield is generously underwritten with support from the following community partners:

#### GOLD SPONSOR

**Bank of Springfield, [www.bankofspringfield.com](http://www.bankofspringfield.com)**

**(217) 529-5555**

Bisch & Sons Funeral Home, [www.dignitymemorial.com](http://www.dignitymemorial.com) (217)544-5424

Feuer-Brozgold Legacy Fund





1045 Outer Park Drive, Suite 320  
Springfield, IL 62704

Phone: 217.787-7223  
Website: [www.shalomspringfield.org](http://www.shalomspringfield.org)  
Email: [sjf@shalomspringfield.org](mailto:sjf@shalomspringfield.org)

Non-Profit  
U.S. Postage  
Springfield  
Permit No. 800

## ADDRESS SERVICE REQUESTED

# LEGACY GIFTS

### Hexter Fund

*In Memory of:*

**Pearl Davis**, from Harry & Deborah Berman  
**Pearl Davis**, from Alan & Harriet Josephson  
**Barry Roth**, from Alan & Harriet Josephson

*In Honor of:*

**Harry Berman**, from Ted & Pam LeBlang  
**Harry Berman**, from Jeffrey & Annette Chesky

### Les and Linda Eastep Fund

A contribution has been received from Rita  
Salemme.

*The mission of the Jewish Federation of Springfield, Illinois, is to serve the Jewish people locally, in Israel and throughout the world through coordinated fund raising, community-wide programming, social services and educational activities.*