

# Poverty & Older Adults in South Jersey

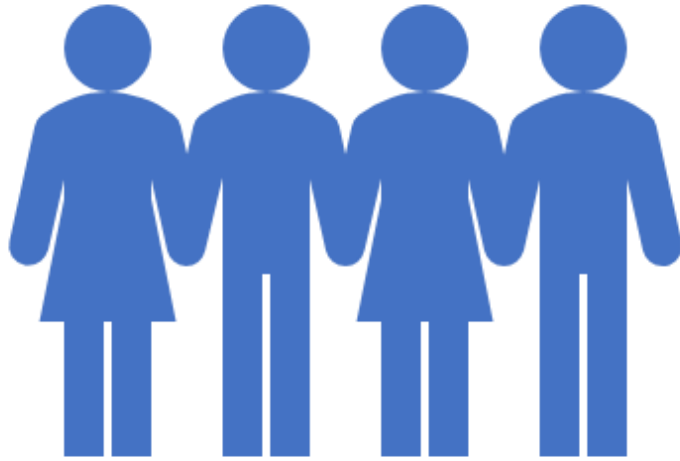
Jewish Federation of Southern NJ



**Jewish Federation**<sup>®</sup>  
OF SOUTHERN NEW JERSEY  
AND OUR FAMILY OF AGENCIES

## Statistics

- Total of 60,000 Jewish individuals in the community
- 18.2% of people over age 65
- Average income is \$50,000– \$65,000
- 12–18% live in poverty
- We spend \$6,501,054 on older adult subsidies & services out of a \$30,000,000 22% of total budget.
- <https://www.jewishvirtuallibrary.org/vineland>
- <http://www.phoenixdocumentary.com>



# Housing Due to Poverty

Existing subsidized housing/affordable

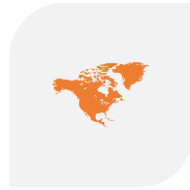
housing:

3 buildings with wait lists of 2+  
years each

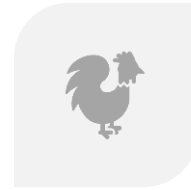
New construction:

160 units with tax credits for  
older adults and adults with  
special needs

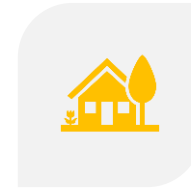
# Holocaust Survivors in Southern NJ



Vineland, NJ was the 3rd largest population of Survivors anywhere in the world



Survivors were given chicken farms and the industry in Vineland became kosher chickens



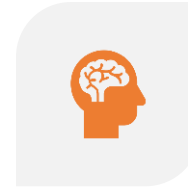
Many Survivors still reside in Vineland, which is a rural area with very few services for them to age in place



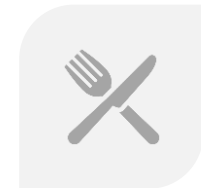
Survivors who reside in this community have few family members nearby and are socially isolated



Many have their original homes which are dilapidated and in need of repair or new heating and cooling systems



Many experience post traumatic stress disorder; psychological and emotional scars from their experiences in the Holocaust which manifest in anxiety and depression



Survivors in Vineland require 2 meals a day from our Kosher meals on wheels program due to the lack of resources in the area and to fight food insecurity

# Hope & Healing



JFNA provided a grant, and our Jewish Federation matched the grant, to create a program providing trauma-informed workshops that focus on wellness and person-centered, trauma-informed care (PCTI)



Monthly sessions for Survivors are offered and include things such as: pet therapy, horticultural therapy, massage therapy, baking, music therapy, chair yoga



We partnered with a synagogue in Vineland to provide the space



Year 2 of this program will expand to include Survivors from the Former Soviet Union

# Hope & Healing Workshop

---



We give hope.  
We give help.

## Hope & Healing Workshop

Luncheon, Social Gathering,  
and Music Therapy

**Tuesday, November 26, 2019**  
11:30am - 1:30pm  
Beth Israel Congregation  
1015 East Park Avenue  
Vineland, NJ 08360

RSVP by November 18, 2019 to Ronda Manders at  
(856) 424-1333 Ext. 3055 or [rmanders@jfedsnj.org](mailto:rmanders@jfedsnj.org)  
and indicate if transportation is needed.



 The Jewish Federations®  
 Center for Advancing Holocaust Survivor Care  
This program was made possible by a grant from  
The JFNA Center for Advancing Holocaust Survivor Care.

 ועידת התביעות  
Confederation of Jewish Material Claims Against Germany  
Social services for Nazi victims have been supported by a grant  
from the Conference on Jewish Material Claims Against Germany

 Jewish Federation®  
THE CONFEDERATION OF JEWISH  
MATERIAL CLAIMS AGAINST GERMANY

# Home Care & Support Services

- Many of those in our community who are aging in place require financial assistance for home care (home health aides, personal care, companions, nurses, etc.)
- We currently subsidize \$3 million each year in this type of care for older adults and Survivors
- Dollars are raised through fundraising efforts, grants from public and private foundations, and allocations from JFED
- In 2019, over 786 older adults have received food so far from our food pantry or free meals from partnerships with our synagogue volunteer programs

# Ideas for Dollars

Grants from private family foundations; get to know the ones in your community

Leverage partnerships and food drives with community partners

Fundraise/crowdsourcing  
“Bubbies Brisket”



Questions?

Contact:

Jennifer Dubrow Weiss, CEO

Jewish Federation  
of Southern New Jersey

Email: [jweiss@jfedsnj.org](mailto:jweiss@jfedsnj.org)

Phone: 856.751.9500 x1172

Website:

<https://jewishsouthjersey.org>



**Jewish Federation<sup>®</sup>**  
OF SOUTHERN NEW JERSEY  
AND OUR FAMILY OF AGENCIES

THE **STRENGTH** OF A PEOPLE.  
THE **POWER** OF COMMUNITY.