

Don't Miss the Fun, the Songs, the Dancing...and the Hair!!!

The Harrisburg Jewish Community Center's Drama Department is excited to present the Broadway hit musical Hairspray on December 6, 8 & 9 in the Mary Sachs Auditorium of the JCC. The cast of 35 and orchestra of 7 will perform the production. The Director/Choreographer is Angela Wise, and the Musical Director is Marina Cherepinsky.

Hairspray is presented through special arrangements with and all authorized performance materials supplied by Music Theatre International out of New York.

In Hairspray, plus-sized, big-haired and boisterous teenager, Tracy Turnblad dreams of dancing on the hit television program, "The Corny Collins Show," and falling in love with the dreamy Link Larkin. When Tracy wins a role on the show, she becomes an overnight celebrity, which allows her to

launch a campaign to integrate the show. In Hairspray, it's 1962, the '50s are out, and change is in the air. Welcome to the '60s!

This show would not be possible if it wasn't for the generosity of the Lois Lehrman Grass Foundation. "We are very fortunate and grateful to have this support, which enables us to produce a show with fine acting, dancing and singing, as well as first-rate sound, lighting, costumes and live music."

"We have been waiting for several years for the amateur rights to become available for this show," said Terry Fisher, who has been involved in the Drama Department since she was in high school. "This is one of those shows that, by the end, if you're in the audience, you just can't help but get up on your feet and dance along with the actors on stage. I love it!"

This comedy is rated PG

and perfect for all members of the family.

It's time to let your hair down and dance the night away! The community will

be swept away to 1960s Baltimore in this international smash-hit musical, piled bouffant-high with laughter and romance – and enough

deliriously tuneful songs to fill a nonstop platter party.

All seating is reserved. Tickets are \$10.00. To purchase tickets call 717-236-9555, ext. 0.

The Jewish Community Center 2012 Drama Department Presents

hairspray

Thursday, December 6 at 7:30 pm

Saturday, December 8 at 7:30 pm

Sunday, December 9 at 2:00 pm

Tickets: \$10

To purchase tickets please call the JCC at 236-9555, ext. 0.
All seating is reserved.

Harrisburg JCC | 3301 N Front Street | Harrisburg PA

Big Musical!

Big Comedy!

Big Hair!

Funding provided by the Lois Lehrman Grass Foundation

Hairspray is presented through special arrangements with and all authorized performance materials are supplied by Music Theatre International, 421 West 54th Street, New York, NY 10019



**JCC Senior Adult Club
Thanksgiving Membership Luncheon**

**Join us for a delicious and delightful afternoon
Tuesday, November 20, 2012
At 12:00 Noon**

**\$10.00 Per Person for Members
\$20.00 Per Person for Non-Members**

**A Traditional Turkey Dinner Catered
By Norman Gras**

Entertainment By :

“Donna and The Daytimers”

Donna and the Daytimers is an instrumental combo that plays a variety of music from marches and Big Band standards to Broadway and Movie themes and novelty tunes. The leader of the band, Donna Deaven, is conductor and music director of the Keystone Concert Band as is many of the performers in the group.

Don't forget we start signing up for our 2013 Dinner Theatre and cultural trips at this Luncheon.

**Reservations are a must!!! DEADLINE NOV.13, 2012
Call: Cheryl at 236-9555 ext.3115
Don't be left out of this one, you'll love it!!**



Community Review

**Vol. 86 No. 23
November 17, 2012
(ISSN 1047-9996)
(USPS 126-860)
Published bi-weekly
by the Jewish Federation of
Greater Harrisburg,
3301 N. Front Street,
Harrisburg, Pa., 17110.
Subscription rate: \$50 per year.
Periodicals postage paid at
Harrisburg, Pa., and
additional entry office.**

Editorial Board Chairman
Bruce Bagley

Editorial Board Members
Bruce Bagley
Barbara Trainin Blank
Esther Boldes
Rabbi Carl Choper
Aaron Dym
Rita Gordon
Jeanette Krebs

**STAFF
Editor**
Patti Bromley
p.bromley@jewishfedhbg.org

Sales Director
Marty Lamonoff
717 232-6279
717-877-5973
lammie@aol.com

Design and Layout
Benchmark Group Media

Graphic Designer
Shawn Skvarna

Postmaster:
Send address changes
to Community Review,
3301 N. Front Street,
Harrisburg, Pa., 17110.

**Mission Statement of
The Community Review:**
Inform readers about local,
national and international
events of interest to Jews.
Promote Jewish values,
Jewish identity and a
sense of Jewish community
in central Pennsylvania.

The opinions expressed in the *Community Review* do not necessarily reflect the position of the Jewish Federation of Greater Harrisburg. *The Federation does not endorse any candidate or political party for any elected office.*

Shalom Neighbor Directory JCC Membership List

We are aware that the JCC membership list in the 2012-13 *Shalom Neighbor* directory is incorrect. Benchmark Group Media will be printing and mailing out a corrected list to those individuals on the *Shalom Neighbor* mailing list.

Foundation of the Foundation

Pledge Week

By Howard Ross | Executive Director | Jewish Community Foundation of Central Pennsylvania



Every time I get into the car this week, I am reminded that this is pledge week and without “me”, National Public Radio cannot provide “the programs I rely upon”.

Sometimes I get a bit tired of the two weeks every year when NPR spends more time raising money than offering me the programming I want to hear while in my car or when working at home at my desk or when the Texaco Opera is offering Carmen or Madame Butterfly. But then I think about what they are saying, “we cannot bring you these programs without your support”.

When I came through the door of the JCC this morning, I joined students of the Silver Academy on their way to school, a group of young moms arriving for a fitness class and moms and dads bringing their young children to the Brenner Early Learning Center for day care/pre-school. And I thought to myself, “we cannot bring you these programs without your support”.

Just like National Public Radio, each of our Jewish institutions relies upon each and every one of us to provide the funding to assure these programs.

When you are asked by The Jewish Federation, the Silver Academy and your synagogue to help support the programs, remember, without you, it cannot be done.

But how do you support everyone? How do you budget your support? That is where the Jewish Community Foundation can help.

The Foundation does not ask for donations to support itself. The Foundation’s only program is helping you with your charitable goals. We you to support YOUR charitable organizations and we offer PLANNED ways to accomplish your charitable goals.

One of the PLANNED ways to support the JCC, your synagogue, Silver Academy, etc., while staying within your budget is through a donor advised fund.

Determine what you are going to give to charity this coming year. Set up a donor advised fund with the Foundation and place that amount in the fund (use appreciated stock and really take advantage of planned tax strategies!). Then, throughout the year (or for years to come, when you add dollars), you recommend and the Foundation distributes, IN YOUR NAME, the amount you want. It is just like your personal foundation (kind of classy!).

A side benefit is that you do not have to secure and maintain substantiation letters or cancelled checks from each of the charities to which you donate; you can file one letter, provided by the Foundation, for the amount you place in your donor advised fund, with your tax return. It makes your year-end tax filing easier, cheaper and far more efficient, besides saving on documents you need to keep for the next seven years.

You can even support National Public Radio through your donor advised fund; any non-profit charity can be recommended so you can receive all of the programs you rely upon and I can continue listening to Car Talk, the Texaco Opera and the daily news.

Call me at 236-9555 Ext.3202 to discuss how you can benefit by establishing a donor advised fund.

Dave Bright

All Around Handyman:

Painting (Int./Ext.) • Power Washing
Home Organization • Cleaning • Household Repairs
Window Washing • Deck Staining • Picture Hanging
Car Detailing • Lawn Maintenance

REFERENCES FURNISHED UPON REQUEST
NO JOB TOO SMALL

717.525.0858

aew1981@hotmail.com



LAW OFFICES OF
AVIV S. BLIWASS, LLC

FAMILY LAW, ELDER LAW, AND ESTATE PLANNING

FAMILY LAW

ELDER LAW

ESTATE PLANNING /
ADMINISTRATION

Divorce

Custody

Guardianship

Medicare/Medicaid

Social Security
Benefits

Veteran's Benefits

Guardianship

Wills / Trusts

Powers of Attorney

Advance Directives

Probate

28 N. 32ND STREET / CAMP HILL, PA 17011 / (717) 440-7640

WWW.BLIWASS.COM / AVIV@BLIWASS.COM

FOR SALE
\$148,900



4007 NORTH 2ND STREET
HARRISBURG, PA 17110

VISIT
realtor.com
FOR A
PHOTO
TOUR

- Recently Updated Stainless Appliances.
- Open Kitchen With Hugh Counter.
- Large Level Lot., 1st Floor Laundry
- Open Foor Plan!
- 3% Seller help make this home a true value
- Home Warranty

STRUAB & ASSOCIATES REAL ESTATE

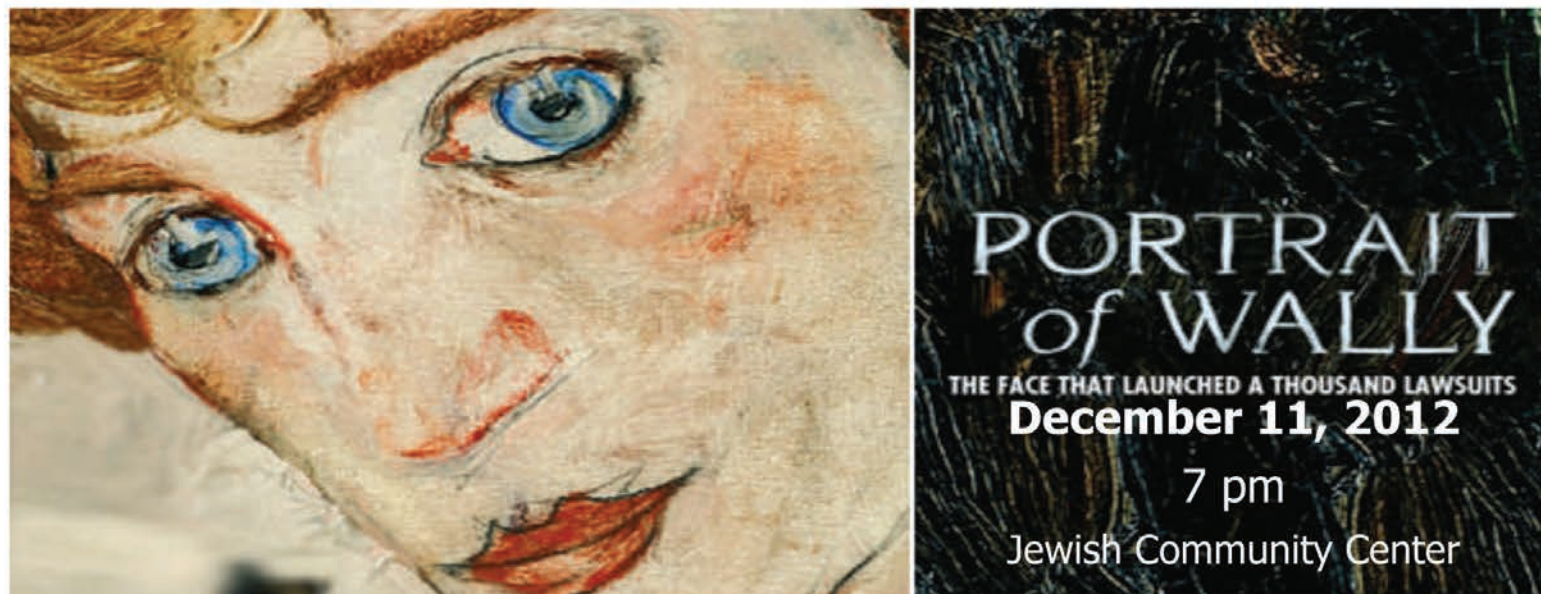
Office: (717) 612-9901

MICHAEL S. LEONZO

Phone: (717) 350-4781

(Owners are PA Realtors)

**The Cardozo Society of the Jewish Federation of Greater Harrisburg and
the Linda Schwab Holocaust Education Fund
of the Jewish Community Foundation of Central Pennsylvania
Present**



Presenter: Howard N. Spiegler, J.D.,
co-chair of Herrick, Feinstein's International Art Law Group in NYC

In 1939, Egon Schiele's celebrated painting, "Portrait of Wally" (1912), a beguiling portrait of the Austrian artist's red-haired mistress, Walburga ("Wally") Neuzil, was seized by a Nazi from Lea Bondi, a Viennese gallery owner. Nearly sixty years later, the painting surfaced on the walls of the Museum of Modern Art, triggering a historic court case that pitted the Manhattan District Attorney, the United States Government and the heirs of Lea Bondi against a major Austrian Museum and MoMA.

CLE program precedes film beginning at 5:30 PM (1 Ethics & 2 Substantive CLE credits)
Pre-registration necessary for CLE program.

Fees:

Dinner, film, and CLE credit application fee:

Cardozo Society member *: \$60 *2013 JFGH Annual Campaign Pledge Required

Non-Cardozo Society member: \$90

Law Students: \$20 - dinner, film

Film only: \$10 - does not include CLE credits

Due to the format of the educational component of this event, the 3 CLE credits can be earned only by attending the entire event and not only the film.

Additional Support from the Following Sponsors



Burton D. Morris and Marian E. Frankston | Saul Ewing LLP | Dan Schulder—Cozen O'Connor
Julia Frankston-Morris and Stuart Gasner

* For information, contact Francine Feinerman, Campaign Consultant,
f.feinerman@jewishfedhbg.org or 236-9555 Ext. 3299 or to register go to
www.jewishharrisburg.org



HELP US NURTURE AND SUSTAIN OUR JEWISH COMMUNITY TODAY AND FOR FUTURE GENERATIONS

TOGETHER



WE



DO EXTRAORDINARY THINGS

SUPPORT THE 2013 ANNUAL CAMPAIGN
OF THE JEWISH FEDERATION OF GREATER HARRISBURG



THE **STRENGTH** OF A PEOPLE
THE **POWER** OF COMMUNITY

(717) 236—9555 ext. 3204
www.jewishharrisburg.org

MAH JONGG CARDS

The Harrisburg JCC Senior Adult Club is once again selling the National Mah Jongg League's card for 2013.

The price of the 2013 card is \$7.00 for a standard card and \$8.00 for a large print card.

Please make your checks payable to the Harrisburg JCC Senior Adult Club and mail them to:

Cheryl Yablon
Harrisburg JCC
3301 N. Front St.
Harrisburg, PA 17110

By January 24, 2013. The Mah Jongg League will mail your card to you in the spring. Thank you. Cheryl

Bowl-a-Palooza



*Join us for a fun evening of bowling,
ice cream, friends and lots of fun!*

Wednesday, November 21

6:00 – 9:30 p.m.

Kindergarten and older

Fee: \$50/Regular Rate, \$25/JCC Members

(JCC Members—Receive \$5 off second sibling registered)

Drop off & pick up at the JCC

To register call the JCC at 236-9555, ext. 0.
Questions?? Contact Terry at 236-9555, ext. 3121,
t.fisher@jewishfedhbg.org.

Registration Deadline: November 15

AMERICAN RED CROSS BLOOD DRIVE WEDNESDAY, DECEMBER 19 at the JCC PLEASE DONATE!!!

The JCC will be having another American Red Cross Blood Drive on Wednesday, December 19, 2012 from 1 to 6 p.m. in the Mary Sachs Auditorium at the JCC.

The Red Cross provides over 40% of the blood needs in the United States; responds to disasters both large and small; helps members of the military, veterans and their families; and teaches lifesaving skills. Maintaining sufficient blood to meet patient needs is a delicate balance between supply and demand. In addition to disaster-related blood needs, the Red Cross must collect enough blood each and every day to help accident victims, cancer patients, surgical candidates, children with blood disorders and others.

The Northeastern Pennsylvania region is responsible for collecting 102,000 units of life saving blood in the coming fiscal year. To meet the needs of patients in hospitals that the region serves, over 400 units of blood must be collected daily. "Critical type" blood needed are O, A negative and B negative donors, whose blood is frequently in high demand by hospitals, but oftentimes is in short supply. There is a particular need for type O negative blood. All blood types can receive type O negative red blood cells. That's why it's used in emergencies when there is no time to determine the blood type of the patient.

Please help by donating blood if you can. For a specific time to come in, call Cheryl Yablon, 236-9555, ext. 3115. Drop-ins are welcome.



Hanukkah Helper

FREE Holiday Prep Class

WHERE WHEN WHAT WHO

Moms of other religious backgrounds raising Jewish children

A one-time class to learn how to create a meaningful Hanukkah for the whole family

Sunday, November 18, 2012 3:00pm

BABYSITTING WILL BE PROVIDED

Jewish Community Center

3301 N. Front Street Harrisburg, PA 17110


RSVP Leslie Wiener
717-236-9555 x3106
l.wiener@jewishfedhbg.org

*Can't make it? Let us know!
Another class may be forming.

Sponsored by Created by



Hanukkah Candle Lighting 

Origins of the Holiday 

Festive Traditional Foods 

Hanukkah Music 

Playing the Game of Dreidel 

Chanu Concert

A COMMUNITY CHANUKAH CELEBRATION

Sunday, December 16, 2012

9:30 am – noon | Mary Sachs Auditorium, JCC

9:30 – 11:00 am

Activities for children in kindergarten – 7th grades

9:30 – 11:00 am

PJ Library Program – adult supervision is required for this program

9:30 – 11:00 am

Parent Schmooze – enjoy friendly conversation, coffee & a donut

11:00 am

Interactive family concert featuring Sheldon Low

This free family program is open to the entire community.

In lieu of admission, please donate a hat, gloves, scarf or socks.

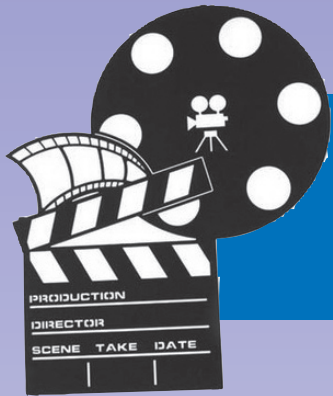
Please RSVP to Andrea at a.weikert@jewishfedhbg.org or to your Religious School Principal.



Presented by: Beth El Temple, Chisuk Emuna Congregation, Jewish Federation of Greater Harrisburg,
Keshet Israel Congregation, Silver Academy, Temple Beth Shalom, Temple Ohev Sholom.

WINTER BREAK KICKOFF CAMP

Kick off the winter time blues by attending the JCC holiday mini camp.
For: Kindergarten – 5th grade



MONDAY, DECEMBER 24 - MOVIE AND GROOVY DAY

Join us as the JCC is turned into a private movie theater.
Enjoy popcorn and other treats during this fun day at the movies.
Pack a lunch, bathing suit and towel.

WEDNESDAY, DECEMBER 26 - SURVIVOR

Think you have the skills to outlast others.
Spend the morning competing against other teams in various challenges,
including capture the flag, dodge ball and many other activities.
Pack a lunch, bathing suit and towel.

THURSDAY, DECEMBER 27 - MAD SCIENCE DAY

Gear up for a fun morning of crazy science experiments.
We will have fun with the mad scientist from camp.
Pack a lunch, bathing suit and towel.

FRIDAY, DECEMBER 28 - SPORTS AND ART EXTRAVAGANZA DAY

This day is perfect for all art and sport lovers.
Sample activities include sports with Terri, beads and gimp, edible crafts and more!
Pack a lunch, bathing suit and towel.

MONDAY, DECEMBER 31- CHOCOLATE WORLD AND ICE CREAM

We will go to Chocolate World, enjoy the 3D show and have an ice-cream treat.
Please pack a lunch, bathing suit and towel.

WEDNESDAY, JANUARY 2 - WINTER WONDERLAND

Make an edible snowman, chocolate chip cookies and hot chocolate,
enjoy a wintery movie and camper's choice activities in the gym.
Pack a lunch, bathing suit and towel.

Cost: \$80/a day/Regular Rate; \$40/a day/JCC members

Monday, December 31 - \$50/JCC Members

Program will run from 8:00AM-6:00PM (Friday close at 5:30 PM)

Early Care available from 7:30 am – 8:00 am at an additional \$5 a morning.

10% discount for those enrolled full time in the after school program.

Registration deadline is December 13. Enrollment is limited

*To register please contact the front office at 236-9555, ext. 0.
Questions? Contact Terry at 236-9555 ext. 3121 or t.fisher@jewishfedhbg.org.*



Ladies Open Play Pickleball

Come learn about the game that is sweeping the nation.
Women of all experience levels are welcome.
No experience...no problem...we will help teach you the rules
and get you playing.

Participants should wear comfortable clothes and sneakers.
We will have equipment for those in attendance to use.
Pickleball is a game for any age and has seen popularity
in the active senior population to those who are young.

Month of November: Free to everybody
December: JCC Members: Free
Non-Members: \$3 a week or \$10 for 4 visit punch card
For more information contact t.travers@jewishfedhbg.org
or 236-9555 ext. 3110

Thursdays 9-11am
Starting November 1

HBG JCC
3301 N. Front Street
Harrisburg PA 17110



Open Play Pickleball

Come learn about the game that is sweeping the nation.
All experience levels are welcome.
No experience, no problem: we will help teach you
the rules and get you playing.

Participants should wear comfortable clothes and sneakers.
We will have equipment for those in attendance to use.
Pickleball is a game for any age.

Month of November: Free to everybody
December: JCC Members: Free
Non-Members: \$3 a day or \$10 for 4 visit punch card
For more information contact
t.travers@jewishfedhbg.org
or 236-9555 ext. 3110

Mondays & Wednesdays
1:30-3:30 pm
Starting November 5

HBG JCC
3301 N. Front Street
Harrisburg PA 17110



JFNA Disburses Emergency Relief to Victims of Hurricane Sandy

November 5, 2012

A week after Hurricane Sandy devastated the East Coast; Jewish Federations continue to respond in force and have begun to distribute funds to offer immediate relief to storm victims. The Jewish Federations of North America (JFNA) Emergency Committee today authorized \$500,000 for immediate humanitarian needs of Hurricane Sandy victims in the New York metropolitan area and New Jersey. The funds will be used for cash disbursements, food,

shelter, clean-up kits and other basic necessities.

This afternoon, \$250,000 was distributed to UJA-Federation of New York and \$250,000 was distributed to the 10 Federations in New Jersey. The funds come from both the JFNA Hurricane Sandy Relief Fund, which has raised over \$245,000 in donations in less than a week, as well as from the JFNA Emergency Committee Reserve Fund. Other Federations across North America have raised hundreds of thousands of

additional dollars through individual relief funds.

"These relief funds – raised through the incredible generosity of the Jewish community – are an important step toward rebuilding our communities," said Cheryl Fishbein, chair of JFNA's Emergency Committee. "In working with the Federations and leadership, we will continue to assess and help address the evolving needs of those recovering from Sandy."

As the scope of Sandy's impact becomes clearer, the



The Jewish Federations
OF NORTH AMERICA

JFNA Emergency Committee, in consultation with Federation and JFNA leadership, will allocate additional funds to meet other short-, medium- and long-term needs of storm victims, communal agencies and others.

Jewish Federations in the affected areas are quickly responding to the needs of hurricane victims through allocations to local agencies. Earlier today, UJA-Federation of New York committed up to \$10 million to its Hurricane Sandy Relief Fund for immediate assistance to organizations and people harmed by the record-breaking storm. It is the organization's largest relief effort to date for a natural disaster. UJA-Federation of New York has already allocated \$200,000 to the Metropolitan Council on Jewish Poverty for immediate food and security needs for its clients and Jewish community councils.

Since Hurricane Sandy pummeled the East Coast on Oct. 29, there have been at least 110 deaths reported and more than \$50 billion in estimated damages. As temperatures drop in areas hard-hit by the storm, many remain without power, heat or gas, and in need of basic supplies and amenities.

The large Jewish community in the New York

metropolitan area continues to suffer as well. Reports indicate that flood damage to the downtown Manhattan location of the Jewish Daily Forward and several other Jewish organizations may keep the building closed for several months. Elsewhere in the area, synagogues, Jewish day schools and other Jewish organizations are coping with serious flood damage and loss of electricity.

Funds are still needed for recovery and rebuilding efforts. Donors should contribute to their local Federation's Hurricane Relief Fund or directly to the JFNA Hurricane Relief Fund at <http://jfeds.org/SandyRelief>. In addition, donors may text RELIEF to 51818 on a mobile device to pledge a donation or send checks to our national mailbox at The Jewish Federations of North America, Wall Street Station, PO Box 148, New York, NY 10268. Please indicate "JFNA Hurricane Relief Fund" on all checks or in the designation box online.

www.JewishFederations.org

The Jewish Federations of North America
Wall Street Station
P.O. Box 157
New York, NY 10268

GiantFoodStores.com

Quality. Selection. Savings. Every Day.

We carry a full line of all your favorite kosher products!

<h3 style="margin: 0;">Empire Ready to Roast Seasoned Chicken</h3> <p style="font-size: small; margin: 0;">Microwavable, 3 lb. pkg.</p>		<h1 style="margin: 0;">\$12.49</h1> <p style="font-size: small; margin: 0;">/ea.</p>	
<h3 style="margin: 0;">Echo Falls Alaskan Sockeye Salmon</h3> <p style="font-size: small; margin: 0;">Smoked</p>		<h1 style="margin: 0;">\$5.99</h1> <p style="font-size: small; margin: 0;">/ea.</p>	
<h3 style="margin: 0;">Empire Kosher Turkey or Chicken Franks</h3> <p style="font-size: small; margin: 0;">16 oz. pkg.</p>		<h1 style="margin: 0;">\$2.69</h1> <p style="font-size: small; margin: 0;">/ea.</p>	
<h3 style="margin: 0;">Bake-at-Home Artisan Breads & Rolls</h3> <p style="font-size: small; margin: 0;">Assorted all natural & trans-fat free varieties. 11-16 oz pkg., Kosher Pareve</p>			

2300 Linglestown Rd., Harrisburg • 5074 Jonestown Rd., Harrisburg
32nd St. & Trindle Rd., Camp Hill

Open 24 Hours/7 days a week for your convenience! Prices effective 11/16–11/29/12

Not all items available in all locations

Food Drive...Just a Reminder

We'd like to continue our food drive all year. People need food all year long, so why not donate all year long? Once again, we remind you that there is a large Central Pennsylvania Food Bank barrel in the lobby of the JCC. Let's keep filling it! Whenever you come to the JCC, remember to bring in a non-perishable item or two. This is such an easy Mitzvah!

Jewish Family Service Rachel Simon Event Great Success



Sunday, October 14th was a beautiful day in many ways. The weather was warm and sunny and the JFS event featuring bestselling author Rachel Simon, author of *Story of a Beautiful Girl*, was also warm and bright for the community. Ms. Simon's presentation conveyed a message of hope and determination for dignity in the world of special needs.

The raffles and silent auction had wonderful prizes and brought brisk business from the attendees. The \$5,000 raffle was won by David Bazelon of Glendale California. Needless to say, he was delighted. Only one prize has not been distributed, as the winner left before claiming the prize and didn't put his or her name on the winning ticket #113558. If you are holding the ticket

and read this article please call JFS, 233-1681, to claim your prize of a beautiful handmade child's poncho and Hershey Kisses beanie baby bear.

JFS thanks also attendees and supporters of this event. The money raised from the Rachel Simon event supports many services and programs of Jewish Family Service. The agency earmarked some of the funds raised for its new A Day Away program for caregivers and their loved ones with Alzheimer's or Dementia and towards a Four Seasons Room for the Second Street Jewish Group Home. The Jewish Group Home Advisory Committee and Keystone Human Services worked on raffle sales and corporate sponsorships to help raise funds.

JFS continues to bring speakers to the community who educate and raise awareness on issues important to the community and reflect the mission of Jewish Family Service. The funds raised from these programs support the many ongoing programs and services of the agency and provide seed money for new programs for the benefit the community.



IT'S NOT TOO EARLY TO START THINKING ABOUT YOUR CHANUKAH HOLIDAY GREETING!



DEADLINE IS NOVEMBER 16TH FOR NOVEMBER 30TH ISSUE

**ACTUAL AD
1" X 2"
\$25**

CHANUKAH GREETING
GREETING SIZE _____ MESSAGE _____ ISSUE DATE **NOVEMBER 30TH**

**ACTUAL AD
2" X 2"
\$55**

- A. A HAPPY CHANUKAH • B. A JOYOUS CHANUKAH TO ALL**
- C. WARM CHANUKAH WISHES • D. CHANUKAH GREETINGS FROM _____ (your name)**
- E. LOVE, LAUGHTER, HAPPINESS • F. CHANUKAH GREETINGS**
- G. WRITE YOUR OWN GREETING**

**ACTUAL AD
2" X 3"
\$75**

NAME AS YOU WOULD LIKE IT TO APPEAR ON GREETING

NAME _____

ADDRESS _____

PHONE _____ E-MAIL _____

TOTAL \$ _____ I WILL SEND \$ _____ BILL _____

MADE CHECK PAYABLE TO COMMUNITY REVIEW, & MAIL TO P.O. BOX 61556, HARRISBURG, PA 17106

**IF YOU HAVE ANY QUESTIONS, PLEASE CONTACT MARTY LAMONOFF
AT: 717-232-6279 CELL: 717-877-5973, FAX: 717-232-2177,
OR E-MAIL: lammie@aol.com**

B'nai Tzedek Manicure for a Cure Event a Success



On Sunday, October 28th, B'nai Tzedek hosted its second Manicure for a Cure event. Over 40 people showed up for manicure appointments with all proceeds benefiting Sharsheret, an organization that helps Jewish women combat breast cancer. Each participant was greeted with some hot chocolate, pink lemonade, pink cookies and Hershey kisses. After their professional manicure, they were sent off with a "swag" bag which included OPI Pink Shatter nail polish, a pink breast cancer bracelet, a pink nail file and candy.

We cannot thank our professional manicurists enough, who donated their time to Manicure for a Cure, Staci Adams from Salon Noelle, Nicole Spitz from Outlooks and Mike Bentz. The event raised close to \$700, and we are still accepting donations. You can mail in your donation to the Jewish Community Foundation of Central PA- attention B'nai Tzedek. Great job to B'nai Tzedek members for organizing and running the event!

For more information about how your teens can join B'nai Tzedek, contact Stuart Gasner Stuartgasner@gmail.com.

BETH EL TEMPLE WELCOMES AIPAC LEADERS

Special Community Program on December 5

Beth El Temple is pleased to welcome AIPAC National Board member Jeffrey Snyder and AIPAC Assistant Area Director Seth Mirowitz as featured speakers on Wednesday, December 5. This program will take place at 7:30 p.m. in the Beth El Temple Sanctuary. This special presentation by representatives of the American Israel Public Affairs Committee is open to the entire community and all are welcome to attend. The presentation is entitled: "A Look Inside: What Lies Ahead for the U.S.-Israel Relationship After the Election."

This is a complex and historic moment for Israel and for the U.S.—Israel relationship. Israel's safety and security is being challenged in new ways from Palestinian statehood efforts in the United Nations to Iran's pursuit of nuclear weapons capability, unrest in the Sinai and a new government in Egypt, and political turmoil throughout the region.

In the United States, a new Congress will be sworn in in January and they will have an impact on America's Middle East foreign policy, including vital foreign aid for Israel.

How can we ensure the strength of the U.S—Israel relationship?

Join us for an exclusive, off-the-record look into recent developments in Washington, Jerusalem, and the Middle East, and the role we can play to help ensure Israel's safety and security at this moment of uncertainty.

Jewish Federation of Greater Harrisburg Snowbird Winter Change of Address Form

Name: _____

Permanent Address:

Phone: _____

Email: _____

Winter Address:

Winter Phone: _____

We're Leaving (date): _____

We're Back (date): _____

Forward the *Community Review* only

Forward all Federation mail

Please return this completed form to:
Beth Romano, Jewish Federation of Greater Harrisburg,
3301 N Front Street
Harrisburg, PA 17110
or email at b.romano@jewishfedhbg.org or call 717-236-9555 ext. 3204



HOLOCAUST DOCUMENTARY PREMIERES AT BETH EL TEMPLE

The Beth El Temple Adult Education Committee is delighted to welcome Jessica Blank as guest presenter at Breakfast 'n Learn on Sunday morning, December 2. This new Sunday morning education series showcases members of our congregation who share their expertise in an informal setting, following minyan and a light breakfast.

A 2012 graduate of Duquesne University with a degree in Digital Media Arts, Jessica had the unique opportunity in her junior year of interviewing a Holocaust survivor in Toronto and, together with one of her professors, accompanying him and members of his family on a journey back to his boyhood home in Poland. The result is a unique documentary entitled "Memory: A Holocaust Survivor's Story," which focuses on one survivor's experience, following his footsteps from childhood before the War to his survival struggle during the War, up to his life today. The film was shown last spring at a Human Rights Film Festival on the Duquesne campus in Pittsburgh and has won an International Telly Award.

At Beth El Temple's Breakfast 'n Learn on December 2, the 45-minute documentary will be shown followed by Q & A and discussion. Please join us for minyan at 9:00 a.m., refreshments at 9:30 a.m. and program at 10:00 a.m. A five-dollar donation from participants is requested to help cover the cost of refreshments.



1302 N 3rd St., Harrisburg
MidtownScholar.com • 236-1680
NEW HOURS! Sun 12pm-7pm
Mon-Thu 8am-9pm, Fri-Sat 8am-10pm



"Simply the Best" Independent
Bookstore for Nine Years Running.
Now Harrisburg's Best Urban
Folk Coffeehouse!

Great Used Books ☞ Fair-Trade Coffees & Teas ☞ Art Gallery ☞ Acoustic Music



**Singer-Songwriter
ELLIS PAUL**
Sunday 11/18
1p matinee, \$5/10
7p full show, \$20



We'll buy your
unwanted, broken
Karat Gold Jewelry

**Platinum and
Silver also**

Come to someone
you can trust...

**No Appointment
Necessary!**

540-9040 Mollie B
Distinctively Different Fine Jewelry and Giftware
2017 Linglestown Rd Harrisburg, PA Beaufort Farms Plaza

Choose The Very Best...

Hospice
OF CENTRAL PENNSYLVANIA

732-1000



David J. Rimmel, P.E., SIOR
President

717-731-1990 Office
717-514-9469 Cell
remmeld@landmarkcr.com

20 Erford Road, Suite 215
Lemoyne, PA 17043
www.landmarkcr.com

ONCOR INTERNATIONAL

COMMUNITY REVIEW AD DEADLINES
NOVEMBER 30, 2012 ISSUE

(CHANUKAH ISSUE)

DEADLINE NOVEMBER 16, 2012

DECEMBER 14, 2012 - Deadline NOVEMBER 30, 2012

CALL MARTY LAMONOFF TO RESERVE YOUR
AD SPACE OR TO OBTAIN A CONTRACT

717-232-6279 - CELL: 717-877-5973

FAX: 717-232-2177

E-MAIL: lammie@aol.com

community calendar

THURSDAY, NOVEMBER 15

Senior Adult Program – 10 a.m., JCC
Program: Program: “The Jewish Perspective”
with Bob Axelrod,, 12:30 p.m.
Beth El Temple Book Club Event with
Author Jonathan Tropper, 7:30 p.m., Beth El

SATURDAY, NOVEMBER 17

Dancing with the Community Stars,
6:45 p.m., JCC

TUESDAY, NOVEMBER 20

Senior Adult Program –
Thanksgiving Membership
Luncheon, 12 Noon, Entertainment by
“Donna And the Daytimers” – JCC

WEDNESDAY, NOVEMBER 21

Bowl-a-Palooza, 6 – 9:30 p.m., JCC

THURSDAY, NOVEMBER 22 - THANKSGIVING DAY

Fitness Center Open 7 a.m. – 2 p.m.
Pool Open 7 a.m. - Noon
ALL OTHER FACILITIES CLOSED

FRIDAY, NOVEMBER 23 - BLACK FRIDAY

Fitness Center Open 6 a.m. – 5 p.m.
Pool Open 7 a.m. – 3 p.m.
ALL OTHER FACILITIES CLOSED

MONDAY, NOVEMBER 26

Silver Academy Book Fair, 8 a.m. – 8 p.m., JCC

TUESDAY, NOVEMBER 27

Senior Adult Lunch Program – 10 a.m., JCC
Program “Lunch N Learn”
with Rabbi Peter Kessler, 12:30 p.m.

THURSDAY, NOVEMBER 29

Senior Adult Lunch Program – 10 a.m., JCC
Program: “Harrisburg and the Civil War” with
Dr. Lawrence E. Keener-Farley, 12:30 p.m.

SATURDAY, DECEMBER 1

Chisuk Emuna Cash and Cocktails,
6:30-10 p.m., JCC

BETH EL TEMPLE

232-0556 | www.betheltemplehbg.org

Minyan 7 a.m. daily and 5:30 p.m. Sunday morning at 9 a.m.
PUBLIC SERVICE ANNOUNCEMENT

CHISUK EMUNA CONGREGATION

232-4851 | www.chisukemuna.org | chisukemuna@comcast.net

Minyan times: Monday, Thursday mornings, 6:50 a.m.
Sunday through Thursday evenings, 7:15 p.m.
Tuesday, Wednesday and Friday mornings, 7 a.m.
Friday evening services at 7 p.m., Saturday evening at same time as Friday evening candle-lighting time. Saturday morning services at 9:15 a.m.
For more information about Chisuk Emuna programs and services, please call our office at 232-4851.

CONGREGATION BETH ISRAEL

Lebanon | 273-2669

Visit the Congregation Beth Israel Web Site at www.congregation-beth-israel.org
All are welcome to our egalitarian services: Sundays at 9 a.m., Mondays and Thursdays at 7:30 a.m. Our Shabbat services, lead by Rabbi Paula Reimers, are at 8 p.m. on Friday evenings and on Shabbat morning at 9:30 a.m. followed by Kiddush.
PUBLIC SERVICE ANNOUNCEMENT

CONGREGATION BETH TIKVAH

Carlisle | 245-2811 | www.bethtikvah.org

PUBLIC SERVICE ANNOUNCEMENT

HISTORIC B'NAI JACOB

Middletown | 319-3014

Historic B'nai Jacob Synagogue, Water and Nissley Streets in Middletown, will conduct Chanukah services on Sunday, December 9th at 3:30 p.m. Latkes and Dreidels will follow. We are a Community Shul, all are welcome.
Visit Web Site for more information or call our Voice Mail at 717-319-3014
PUBLIC SERVICE ANNOUNCEMENT

KESHER ISRAEL CONGREGATION

238-0763 | www.kesherisrael.org

Participate in our daily Minyanim. Mornings: Sundays and Federal holidays at 8 a.m., Monday through Friday at 6:45 a.m. Rosh Chodesh and fast days at 6:30 a.m. Evening services begin at 20 minutes before sunset.
Please join us for our 9 a.m. Shabbat morning services - followed by kiddush
PUBLIC SERVICE ANNOUNCEMENT

TEMPLE BETH SHALOM

697-2662 | www.tbshalom.org

Join us for our contemporary Kabbalat Shabbat at 7:15 p.m. or our more traditional Shacharit Shabbat at 9 a.m. Temple Beth Shalom is proud to offer a range of programming for all ages.
To find out more about our programs and events, visit www.tbshalom.org or contact us at tbs.temple@verizon.net.
PUBLIC SERVICE ANNOUNCEMENT

TEMPLE OHEV SHOLOM

233-6459

Friday, November 16: Shabbat Family Service, 7:30 p.m., Sanctuary
Saturday, November 17: B'nai Mitzvah, 10:30 a.m., Sanctuary
Friday, November 23: College Shabbat Service, 6 p.m., Lehrman Chapel
Friday, November 30: New Member Shabbat Service, 7:30 p.m., Sanctuary

HANNAH EDITH JACOBS

Hannah Edith Jacobs passed away near the end of her ninety-fourth year on Saturday, October 27, 2012 at ManorCare in Carlisle, PA. Hannah was born in Harrisburg on November 8, 1917. She was the daughter of the late Albert and Rose (Lipman) Cohen and the older sister of Mason Cohen, now deceased. She attended Cameron Elementary School, Camp Curtin Junior High School and William Penn High School, class of 1935, all in Harrisburg. She was married in Atlantic City to the late Emanuel "Manny" Jacobs whom she met while horseback riding in Hershey, Pa. She was the mother of Joel Robert Jacobs of Carlisle, who is married to Dr. Deborah F. Jacobs, a professor of Social Work. In addition, she is survived by three grandchildren; Daniel James and Moshe Benjamin Bell-Jacobs and Cassie Rose Jacobs. She was a loving grandmother and in addition to providing them day care, when needed, she took the children out each year to buy an outfit for back-to-school. She is also survived by her nephew Barry Cohen and his son Zach.

Hannah was awarded a diploma from the Louie Miller School of Millinery in Chicago, IL in 1944 and created fine hats for all occasions in a studio constructed for her by her husband in a 2nd floor room of their house at 3157 N. 6th St in Harrisburg. She was a member of Keshet Israel Synagogue, Harrisburg Hadassah, and the Jewish Community Center where she frequented the Seniors Club. She belonged to the Blue Ridge Country Club for approximately 50 years. Her employment history includes stints at the Mary Sachs Department Store, the Junior Dress Shop, and the Jack and Jill children's store. She was an insurance adjuster for the former Pennsylvania Department of Highways during the Leader and Lawrence administrations. She retired from Irving Shoes Inc. where she was the buyer of handbags and accessories. She was a member of the Women's Guild of the Osteopathic Hospital, serving as local and state president and for many years was chairwoman of their Blossom Time Dance. In her younger years she enjoyed bowling and golf and was a weekly Mahjongg player. With her "Sweet Manny" she spent many Februaries in Marcos Island, FL. She had a lovely voice and sang with local bands in her teens and early twenties. She performed and danced with her husband in variety shows at the JCC.

Hannah was a very creative person. She made copper etchings, designed and constructed centerpieces for affairs, decorated with sea shells, painted with water colors, knitted Afghans and played the piano. She also solved the daily crossword puzzle and loved solitaire. In addition, she was a terrific cook of Jewish foods and anything else that could be produced in her kitchen. She was famous for her spaghetti sauce, chicken soup, tzimmiss, brisket, mashed potatoes, pie crusts and all sorts of baked goods.

Funeral services were held at the Keshet Israel Cemetery on Monday, October 29, 2012 with Rabbi Akiva Males officiating. Donations in Hannah's memory may be made to the Jewish Community Center of Greater Harrisburg, 3301 N. Front Street, Harrisburg, PA 17110.

SHAWN M. MISHKIN

Shawn M. Mishkin, 43, of Camp Hill passed away Tuesday, October 30, 2012 at Hershey Medical Center. He was the owner and manager of Plum Sport for many years, and was currently enrolled at Temple Pharmaceutical School. Shawn enjoyed motorcycles, his Scout car, the outdoors, and spending time with his family and friends. He is survived by his father Isaac M. Mishkin of Mechanicsburg, his mother Patricia Phillips of Camp Hill, his wife Holly A. Mishkin and daughter Nadia P. Mishkin both of Camp Hill, four sisters Kirsten I. Rettberg of Camp Hill, Jennifer M. Mishkin of Virginia, Michaela L. Mishkin of Mechanicsburg, and Molly C. Corcoran of Texas, one brother Harrison S. Mishkin of Mechanicsburg, two cousins Nathan Chernecke of Virginia Beach, and Marcus Chernecke of Texas, and several nieces and nephews. Funeral services were held on Friday, November 2nd at Beth El Cemetery, Harrisburg, PA. Arrangements were entrusted to Hetrick-Bitner Funeral Home Harrisburg, PA. To send condolences to the Mishkin family, please visit www.HetrickBitner.com.

COMFORTING IN-HOME CARE
WITH A TOUCH OF TECHNOLOGY.

For over a decade, Comfort Keepers® has been helping seniors maintain independent lives by providing in-home care and safety.



Like cooking, light housekeeping, bathing or grooming.

And our SafetyChoice® Personal Emergency

Response Systems mean help is always

available. Learn more by contacting us at:



717-920-9898

7A North Clover Lane
Harrisburg, PA 17112



Comfort
Keepers®

Each office independently owned and operated.
© 2011 CK Franchising, Inc.

www.comfortkeepers.com

We are honored to be selected as the funeral home for the Jewish Community.

We have served the greater Harrisburg community for over 70 years and are committed to helping families before, during and after their time of need.

If you have any questions or concerns during this time of transition, please call either Nathan Bitner or Graham Hetrick at 545-3774 and we will be happy to assist any of your needs.

**Hetrick-Bitner
Funeral Home, Inc**

3125 Walnut Street
Harrisburg, PA 17109
(717) 545-3774
Nathan Bitner, Supr



**BRACHENDORF
MEMORIALS, INC.**

REPRESENTATIVE: JOHN MCGINNESS

2131 HERR STREET • HARRISBURG, PA 17103

PHONE (717) 234-7909 • FAX (717) 234-7900

E-MAIL: BRACHENDORF@COMCAST.NET

ALL MAJOR CREDIT CARDS ACCEPTED

**Romberger
Memorials**

Contact

Charles Press • Residence
545-1081 or

Steve Bomgardner • Office
232-1147

visa and m/c accepted

www.rombergermemorials.com

The family of our Bob wishes to thank our family and friends for your thoughtfulness, contributions and visits at the time of his passing.

*Our heartfelt appreciation
The Sussman Family*

DRIVER SERVICES
NEW YORK, PHILADELPHIA
BALTIMORE, WASHINGTON
AND FLORIDA.
YOUR CAR OR MINE
HOWARD GALE
717-731-0556

CANDLELIGHTING

November 16.... 4:31 p.m.

November 23.... 4:27 p.m.

November 30.... 4:24 p.m.

**JUMP FOR JOY
FOR HANUKKAH
WITH PJ
LIBRARY
AT**



Make your own
Color Me Mine Calendar
from Shalom Sesame



**CAKE
DRINKS
HANUKKAH CRAFTS
AND BOUNCING FUN!!**

**JOIN YOUR
PJ LIBRARY
FRIENDS
SUNDAY
DECEMBER 2, 2012
3:00PM-5:00PM
MONKEY JOE'S
3608 HARTZDALE
DRIVE
CAMP HILL, PA**

**RSVP IS A MUST!!! BY NOV 26TH
CONTACT LESLIE WIENER
L.WIENER@JEWISHFEDHGB.ORG
OR 717-236-9555 X3106**



A gift of the Jewish Federation of Greater Harrisburg
Made possible by an Annual Campaign gift from Mimi Bernstein