

*The Jewish Federation of Grand Rapids  
Invites the Entire Community*



# PURIM CARNIVAL



The program is sponsored by Ahavas Israel, Chabad House,  
JFGR, Temple Emanuel, and UJS

**SUNDAY, MARCH 20**

**12:30 P.M. - 2:00 P.M.**

**TEMPLE EMANUEL**

1715 East Fulton

**FUN FOR ALL AGES!**

*Remember to wear a costume . . .*



**Lunch • Hamantashen • Games  
Cotton Candy • Arts & Crafts  
Face Painting • Moon Walk  
Costume Contest and  
a Lot of Surprises**



FREE Admission for UJS children and teachers

Children up to 18 years old FREE • ADULT LUNCH \$3.00

RSVP for lunch by March 17 to [sari@jfgr.org](mailto:sari@jfgr.org) or 942-5553



## Jewish Federation of Grand Rapids

2727 Michigan NE  
Grand Rapids, MI 49506  
p. 616-942-5553  
f. 616-942-5780  
info@jfgr.org  
www.jfgr.org

### Officers

#### Chair

Dan Hurwitz

#### Vice Chairs

David Alfonso  
Judith Joseph  
Greg Kaufman  
Andrew Samrick

#### Treasurer

Claude Titcher III

#### Past Chair

Karen Padnos

#### Interim Executive Director

Michael L. Present

### Board of Directors

Glenn Barkan  
Stuart Berman  
Davida Dennen  
Machelle Hammond  
Norm Kravitz  
Marisa Krishef  
Audrey Sundstrom  
Lanny Thodey  
Chad Zagel

### Ex-Officio Members

Congregation Ahavas Israel  
Rabbi David Krishef  
Marni Vyn, President  
Temple Emanuel  
Rabbi Michael Schadick  
David Fishman, President  
Chabad House  
of Western Michigan  
Rabbi Yosef Weingarten

## One Community

### Interim Executive Director's Letter March 2011

Dear Friends,

My wife Carol and I recently celebrated our 30th wedding anniversary in South America. While on vacation we had the opportunity to tour two Jewish communities in Montevideo, Uruguay and Buenos Aires, Argentina. I'd like to share with you some of what we learned during these fascinating tours.

Both communities peaked in their population during the 1960s. Montevideo, the smaller community, had 50,000 Jews a half century ago, though only 18,000 today. Buenos Aires had 500,000; that number has now shrunk to 280,000. The reasons are recognizable: difficult economic times, low birth rates, intermarriage, and emigration to Israel. Also familiar is that both community populations are mostly secular. Nevertheless, there was a spirit in both communities that left us with a sense of optimism for their future.

The Montevideo community has 11 synagogues, both Ashkenazi and Sephardic, all orthodox except for one conservative shul. There are three private Jewish day schools, described as secular, religious and Lubavitch. Every Jewish child is guaranteed to attend one of these schools (i.e. subsidies are available) if their parents so desire.

We visited two of the synagogues as well as a community center. A sign of the times - the buildings were well secured. We also stopped at a Holocaust memorial created nearly 20 years ago by both the local Jewish community and the Uruguayan government. It is located in a beautiful park on the Atlantic Ocean. In addition to railroad tracks and a stark chimney, the centerpiece of the memorial is a low wall. Its design is reminiscent of the Vietnam memorial in Washington, D.C., in that you walk down to the middle of the wall and then up as you leave it. There are no names on the wall; rather, there are various tombstones in front of it with quotes from Eli Wiesel, Maimonides, the Torah, etc. This memorial was both surprising to see and very moving.

The Buenos Aires community has more than 70 synagogues, mostly conservative. A significant percentage of the population decline noted previously occurred in the early 2000s caused by their well known economic problems. The result is that only slightly more than 50% of Argentinean Jews now consider themselves middle or upper class. Assimilation is also a major cause of the population decline. Of note, anti-Semitism is now considered not as significant a problem as it had been in the past.

We visited the 'great synagogue' of Buenos Aires, including its sanctuary that could easily be a cathedral in any European city. We also toured the AMIA, or the Israeli-Argentinean Mutual Association, the site of the 1994 terrorist attack that killed 85 people. While security is heavy, inside this community center is vibrant. The resilience of the community is evidenced by the beehive of activity at the center.

We also paid our respects at the site of the Israeli Embassy terrorist bombing in 1992. There are 22 trees organized in two rows in a small, street corner park, representing the memory of the people lost and, importantly, the renewal of life. I will never forget our 15 minute visit to that simple yet powerful memorial park.

Carol and I look back on these visits realizing that, except for our grandparents' and great-grandparents' decision to move to North rather than South America, the Jews we met there could have been us. Both cities' communities expanded significantly, as here, between the 1880s and 1940, due primarily to the European anti-Semitism of that period. Some of the funds we raise are directed to help these communities, our distant family, via the American Jewish Joint Distribution Committee, and the Jews we met in these distant communities were appreciative of our support through the 'Joint'. It was inspiring to see that, while smaller, they continue to survive – and thrive.

*Best wishes,*  
Mike Present



## In This Issue . . .

Federation News . . . . .	2-3
Senior Programming . . . . .	4
Community News . . . . .	5-10
Congregational News . . . . .	11
United Jewish School . . . . .	12, 13
International News . . . . .	14
Endowment News . . . . .	15

**Federation is now on Facebook!**  
Become a Fan of Jewish Federation of Grand Rapids

### OUR MISSION

*Jewish Federation of Grand Rapids supports cultural, social and financial needs of Jews locally, in the State of Israel, and around the world.*

*This mission is accomplished by providing services to the community and through fundraising and allocation efforts.*

## Make the Most of your Campaign 2010 Dollars Young Leadership Challenge Grant

If you are 40 years of age or younger, any new gift or increase over last year's gift will be matched dollar for dollar, up to \$5,000, thanks to the generosity of the Hurwitz and Thodey families through the Hy and Greta Berkowitz Foundation.

## The Louis and Helen Padnos Foundation Challenge Grant

Any new gift and any increase up to \$2,500 to last year's gift will be matched, dollar for dollar, up to \$20,000, thanks to the generosity of the Padnos Foundation.

Please help us meet our goals and raise this additional \$25,000 in challenge grants.

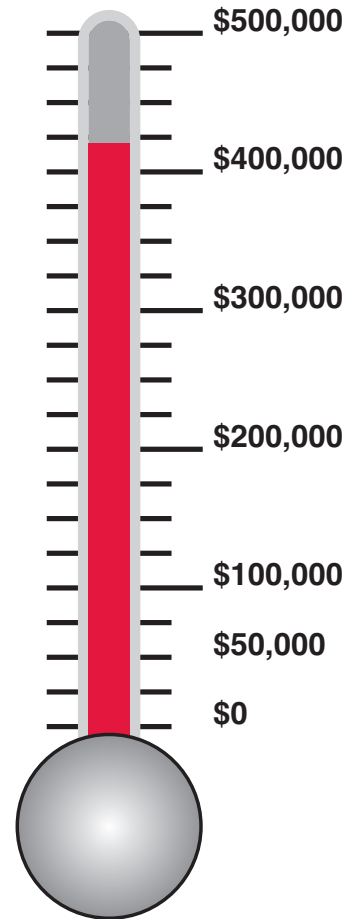
**The Jewish Federation now accepts Discover credit card along with Master Card and Visa**

**Please make your gift today!**

**Campaign Donations as of February 15, 2011**

**438 Gifts**

**\$423,400**



## ANNUAL CAMPAIGN

**Jewish Federation of Grand Rapids**  
2727 Michigan NE  
Grand Rapids, MI 49546  
(616) 942-5553 email: info@jfggr.org  
www.jfggr.org

### Live Generously.

Name \_\_\_\_\_

Address \_\_\_\_\_

**Please consider a 10% increase**

Please cut out this pledge card, fill it in and send it to the Federation office.

I HEREBY PLEDGE TO THE FEDERATION ANNUAL

CAMPAIGN THE SUM OF: \$ \_\_\_\_\_

\_\_\_\_\_  
Donor's Signature

Method of Payment:  Check  Stock

Please charge my:  Mastercard  Visa  Discover

\_\_\_\_\_  
Card Number

\_\_\_\_\_  
Exp. Date

# SENIOR PROGRAMMING . . .

## LUNCH BUNCH/ Purim Celebration!

Monday  
March 21



11:30 a.m. at

**First Wok**

6740 Old 28th Street, S.E.  
Grand Rapids, MI 49546

**Cost: \$8.00**

Please RSVP to Ann at **942-5553**  
by **Thursday, March 17**

*Transportation is available!*

~ *Save the Dates* ~  
**Lunch Bunch**

Monday,  
**April 11, 2011**  
Tuesday,  
**May 17, 2011**

*Locations to be announced.*  
*If you have a suggestion, please*  
*call Ann at 942-5553 or email*  
*them to [ann@jfgr.org](mailto:ann@jfgr.org)*

## Road Trip

Dear Seniors,

Back by popular demand, please plan a day to travel to Detroit for some Passover shopping. The plan is to go on Tuesday, April 5th.

I do not have all the details worked out but if you are interested in going, please call the office and get on the list. I can then keep you personally updated as I firm up the details.

If you have any suggestions regarding planning this trip, I would love to hear them. You can either call me at 942-5553 or email me at [ann@jfgr.org](mailto:ann@jfgr.org).

There will be a nominal fee of \$10 to go towards the cost of transportation. Lunch will be at your own expense.

**Please call 942-5553 ext. 206  
with questions or to RSVP.**

Sincerely,  
Ann

## Senior Mah Jongg

Anyone interested in learning and/or playing Mah Jongg, please contact Aleta Katonak, either by email – [alekatsr4u@juno.com](mailto:alekatsr4u@juno.com) (preferable) or by phone – 281-5917.

These are daytime lessons and games are at no cost. Then, of course, if there is anyone looking for a game, join the fun!

MahJ into the new year 2011!!!



Transportation is available.

## 2011 Community Scholar in Residence – March 25, 26 and 27, 2011

### RABBI NAOMI LEVY

Rabbi Levy was named one of the most influential rabbis in North America. In 1984 she was in the first class of women to enter The Jewish Theological Seminary's rabbinical school. In 1989, Rabbi Levy became the first female Conservative rabbi to head a pulpit on the West Coast. Since then, she has published three books, and founded Nashuva, a groundbreaking religious community in Los Angeles.

Rabbi Levy has appeared on NBC's Today Show and on Oprah, and has been featured in *Parade*, *Redbook*, *Self*, and *Los Angeles Magazine*. She serves on the faculty of the Wexner Heritage Foundation, and she lectures widely on topics of faith, strength, renewal, spirituality, healing and prayer.



## THE TOPIC OF THE WEEKEND: "HOPE WILL FIND YOU"

### FRIDAY, MARCH 25 – TEMPLE EMANUEL

6:15 p.m. Service followed by dinner at 7:00 and lecture at 8:00 p.m.

**Topic: "Life Under Construction: Repairing Ourselves, Repairing the World"**

### SATURDAY, MARCH 26 – AHAVAS ISRAEL

9:30 A.M. Service followed by light lunch and workshop at 1:00 p.m.

**Workshop Title: "Mentors in unlikely places: Learning from all people"**

### SUNDAY, MARCH 27 – TEMPLE EMANUEL

Light breakfast at 10:00 a.m. followed by Lecture at 10:30 a.m.

**Topic: "Finding Stability When Life Seems to be Spinning out of Control:  
The Power of Prayer to Center Our Lives"**

RSVP to the Jewish Federation – 942-5553 or [Sari@jfgr.org](mailto:Sari@jfgr.org)

YOUR CHECK IS YOUR RESERVATION

1 – Friday Italian Sabbath dinner catered by Marie Tulett . . .  
\$12 adult, \$6 child, maximum per family \$36

2 – Sunday breakfast (bagel & lox) . . . \$5 per person

*The weekend is sponsored by the Congregation Ahavas Israel, Temple Emanuel,  
and The Jewish Federation of Grand Rapids*



## JEWISH OVERNIGHT SUMMER CAMP SCHOLARSHIPS!

*Do you know a child who plans to attend a Jewish summer camp?*

They may qualify for a camp scholarship through the David and Susan Samrick Youth Scholarship Fund.

*Now is the time to apply for financial assistance!*

Applications are available upon request, and are due now.

Please contact the Jewish Federation at 942-5553.

\*\*All applications will be reviewed by a Scholarship Committee and held in the strictest confidence\*\*

## Butterfly Project



The Jewish Federation is partnering with the Grand Rapids Children's Museum in the Butterfly Project. The purpose of this project is to collect 1.5 million handmade butterflies to memorialize the number of Jewish children killed during the Holocaust.

This will become an exhibit in 2013 in The Holocaust Museum in Houston, TX.

Please check the Children's Museum website for information on requirements and ideas at [www.grcm.org](http://www.grcm.org) or the Holocaust Museum [www.hmh.org](http://www.hmh.org).

**There are drop off boxes at JFGR, UJS, Temple, Ahavas Israel, and the Chabad House.**

**For additional information contact Sari at 942-5553; Email: [sari@jfgr.org](mailto:sari@jfgr.org).**

## HADASSAH BOOK CLUB

*The next book club meeting:*  
**Wednesday, April 13, 2011, 7:15 pm**

**at Flory Silverstein's home**

2930 Bonnell Ave SE, East Grand Rapids

Please call Flory at 949-5766 to inform if you will be coming (a must)

Book to read:

*Wedding Song*

by Farideh Goldin



Facilitator: Susette Tauber

*Book Ends by choice. . .*

Flory Silverstein – 949-5766  
& Sue Remes – 949-3505

## NOTICE REGARDING THE NEW JEWISH COMMUNITY ROSTER FOR 2011-2012

We are having some problems with the binding on the new rosters. If you have purchased one, we will replace it. Please return your roster to us by March 31, 2011 if you want a replacement.

The rosters yet to be sold are being re-bound. We will have them available for sale very soon.

**Please contact Eileen Enoch (949-6444), Janice Anderson (676-8141) or Lanny Thodey (956-6161) to discuss replacing your roster or to order (available after re-binding).**

Once the rosters are redone, we will once again have them available at the Congregation Ahavas Israel and Temple Emanuel offices to save you the postage fees.

Thanks for your patience and understanding!

# CHICKENFAT KLEZMER ORCHESTRA

*A Jewish Cultural Council  
& The Grand River  
Folk Arts Society Event*

*Thank you to everyone for  
your participation on a cold  
and snowy evening*



# FILM FESTIVAL . . .



**PLEASE PLAN TO ARRIVE EARLY.** That means even if you are holding a flex pass ticket, seats are not guaranteed later than thirty minutes prior to movie time. **Flex pass tickets are only available until May 1st.**

The Film Festival also offers members of the community an opportunity to become an individual sponsor of the Jewish Film Festival. Please read about the benefits of becoming a financial supporter below.

### Individual Sponsors Get Great Benefits!

**Director: (\$500.00)** receive two flex passes (16 admissions), recognition in all publications, and four admissions to all private receptions, dinners and events.

**Producers: (\$250.00)** receive two flex passes (16 admissions), recognition in all publications and two admissions to all private receptions, dinners, and events.

**Actor: (\$100.00)** receive one season punch card (8 admissions) and recognition in the program booklet.

**Film Fan:** If you would like to financially support the Jewish Film Festival and do not see an amount that interests you, please feel free to send a contribution in any amount to the Federation office. You will be listed in the program booklet.

The 2011 Jewish Film Festival is once again bringing special movies to the Grand Rapids community (see next page). The committee has been pre-viewing movies and planning special programs. As in previous years, the Film Festival will be held at Celebration! North Cinemas. Watch for more details about the festival events in our community mailings.

The Film Festival is offering special rates through a **flex pass** (eight admissions); the flex pass is **\$36.00**. Flex pass ticket holders will have seats reserved until **THIRTY MINUTES** prior to the movie beginning. At that time, tickets will be sold for all seats.

---

### *I would like to be a Film Festival Sponsor*

NAME: \_\_\_\_\_ PHONE: \_\_\_\_\_

\_\_\_\_\_ **Film Festival Director (\$500.00)**

\_\_\_\_\_ **Film Festival Fan**

\_\_\_\_\_ **Film Festival Producer (\$250.00)**

\_\_\_\_\_ **Flex Pass (\$36.00)**

\_\_\_\_\_ **Film Festival Actor (\$100.00)**

Mail this form and your check to:  
**Jewish Federation of Grand Rapids**  
2727 Michigan NE, Grand Rapids, MI 49506



# FILM FESTIVAL . . .

## 13th Annual JEWISH FILM FESTIVAL OF GRAND RAPIDS

Sunday, May 1st – Thursday, May 5th, 2011

At  
Celebration!  
Cinema North

**Sunday, May 1st 4:30 p.m.**

### **LITTLE TRAITOR** (*Family Matinee!*)

The film takes place in 1947 Palestine, just a few months before Israel becomes a state. Proffy, a militant yet sensitive twelve year old, has grown up under British occupation and wants nothing more than for the occupying British to get out of his land. He and his two friends are always plotting ways to terrorize the British until one evening, while he's out after curfew and seized by Sergeant Dunlop. Instead of arresting him, the Sergeant escorts him back home and a friendship begins to develop in the following weeks.

**6:45 p.m.**

### **LA RAFFLE (THE ROUNDUP)**

Joseph is eleven. And this June morning he must go to school, a yellow star sewn on his chest. He receives the support of a goods dealer and the mockery of a baker. Between such kindness and contempt, Jo, his Jewish friends, and their families, learn of life in an occupied Paris, on the Butte Montmartre, where they've taken shelter. At least that's what they think, until that morning on July 16th, 1942, when their fragile happiness is toppled over. La Raffle follows the real destinies of the victims and the executioners, of those who orchestrated it all, of those who trusted them, of those who fled, and of those who opposed them. Every character in this film is real.

**Monday, May 2nd 7:30 p.m.**

### **FOR MY FATHER**

Tarek, a Palestinian forced on a suicide mission in Tel Aviv to redeem his father's honor, is given a second chance when the fuse on his explosive vest fails to detonate. Forced to spend the weekend in Tel Aviv await-

ing its repair, Tarek must live amongst the people he was planning to kill. To his surprise he connects with several Israelis on the outskirts of society, including the beautiful Keren, who has cut off contact with her Orthodox family and upbringing. With nothing to lose, Tarek and Keren open up to one another, and an unlikely love blooms between two isolated and damaged individuals, raised to be enemies.

**Tuesday, May 3rd 7:30 p.m.**

### **ANITA**

*Anita* is the story of a young woman with Down Syndrome who gets lost in Buenos Aires after the 1994 bomb attack on the AMIA Jewish Community Center. The film is by renowned filmmaker Marcos Carnevale, director of *Elsa and Fred*, and stars Norma Aleandro, the "Meryl Streep" of Argentina.

**Wednesday, May 4th**

**Festival Dinner 6:00 p.m.**

*In the Wave Room at Celebration! Cinema*

**7:30 p.m.**

### **PRECIOUS LIFE**

After Raida is told she may have to bury her newborn child next to her two daughters, who died from a genetic disease in Gaza, Dr. Raz Somech, a young pediatrician at Tel Hashomer Hospital, joins the fight to save the baby's life. He turns to the film director and Arab affairs correspondent, Shlomi Eldar, and asks him to broadcast a story about the "bubble boy".

Guest speaker: Dr. Raz Somech, invited

**Thursday, May 5th 7:30 p.m.**

### **THE MATCHMAKER**

Avi Neshet's film mixes comedy with drama as it tells a coming-of-age story unlike any you've ever seen before.

Arik, a teenage boy growing up in Haifa in 1968, gets a job working for Yankele, a mysterious Holocaust survivor and matchmaker. He has an office in back of a movie theater that shows only love stories. Yankele introduces Arik to a new world, built on the ruins of an old one. As Arik begins to learn the mysteries of the human heart through his work with Yankele, he falls in love with Tamara.

# COMMUNITY NEWS . . .

## Jewish Community Business Forum

You are invited to network with other Jewish professionals and business owners in the Grand Rapids community.

**Location:** El Barrio, 545 Michigan NE  
**Date/Time:** Thursday, March 10th, 12 -1  
(Lunch is at your own expense)

*This is a great opportunity to tell others in the community what you do!*

*~ Save the Date ~*

**Hadassah & JFGR Women's Seder**

**April 12**

Temple Emanuel

*More information to follow*



**Jewish Theatre Grand Rapids is holding auditions for its next production,**

***BITTER FRIENDS,***

**Written by Gordon Rayfield and directed by Chris Mahlman**

**Show dates will be April 28, 30, May 1, 5, 7 & 8, 2011.**

*Casting will be for 1 female and 1 male in their late 20s to 30; 3 males 40-60; 1 female late 30s; 1 female late 50s.*

**Please call 234-3595 for further details regarding dates and times of auditions.**

## JFGR Emergency Loan Program

Jews in our community may be eligible to receive an emergency loan if the circumstances for a request are appropriate.

Often loans are requested to pay utility bills, rent, or an unexpected expense.

To apply, a confidential interview is conducted and this information is presented to a committee which determines eligibility.

The loan is interest free, and the repayment schedule is very flexible.

Contact Ann for a confidential consultation – 942-5553, Ext. 206



## **YAD Mah Jongg**



*Join us at our next game!*

**For information about the ongoing Mah Jongg games, please contact Michele Young at 828-4806 or [youngml1967@gmail.com](mailto:youngml1967@gmail.com)**

*Beginners welcome! No experience necessary.*



## Temple Emanuel

*The entire Jewish Community is Invited to  
Join us for a Jolly Holiday with Mary  
as we Celebrate Purim 2011  
March 20th at Temple Emanuel  
in a very British way  
Come for Dinner at 6 p.m.*

*with a Menu of Classics (for all ages) from Great Britain*

**A Megillah Reading Follows at 7:00 PM  
and a Special Re-telling of the Purim Story  
in Shpiel Form Featuring Music from  
Disney's Classic, "Mary Poppins", immediately  
after with many of our very talented  
Temple Emanuel members performing**

**Costumes are Encouraged**

The cost for dinner is \$12 for adults and  
\$6 for children under 13

Your check is your reservation to the Temple office by  
Wednesday, March 16.

---

*The entire Jewish Community is Invited  
to join us at Temple for a special  
documentary screening of Malawi and  
Malaria: Fighting to Save the Children  
on Saturday night, March 5 at 7:00 PM.*

Temple member Bob Gould, is a faculty member in the School of Journalism at Michigan State University. Bob has co-produced this documentary that chronicles the efforts of MSU Professor Terrie Taylor to help treat and cure children afflicted with malaria. Taylor has spent nearly 25 years sharing her time between the MSU campus and Malawi, doing groundbreaking clinical research and treating patients. Her findings are recognized worldwide.

The documentary features stories of families who are affected by the disease. With powerful imagery and narrative the documentary explores this small Sub-Saharan country, showing how, despite the widespread poverty, families live their everyday lives, using their faith to get them through.

Bob Gould produced this with his fellow faculty member Sue Carter. They traveled to Malawi last March and the documentary made its public television debut this past December in Lansing on WKAR-TV. Bob and Sue are starting to show the film around the state to raise awareness and to help raise money for bed nets.

Bob Gould and Sue Carter are veteran EMMY-Award winning broadcasters with nearly 60 years of television reporting and producing experience between them.

A question and answer period will take place following the screening.

A dessert reception will conclude the evening.

Please call the Temple office to RSVP at 459-5976.

## Congregation Ahavas Israel

*You are invited to . . .*

*Join us this month on  
Shabbat morning, March 5  
for a special Shabbat speaker,  
Dr. Bernard Taylor,*

Superintendent of the Grand Rapids  
Public Schools

*Join us on Saturday evening,  
March 19 at 9:00 p.m. for  
our blow-out celebration of  
Purim –*

Megillah reading, Purimshpiel  
(watch your friends make fools  
of themselves), and party.

## Chabad House

# PURIM CELEBRATION DINNER

Open to the entire  
Jewish community

# MARCH 20<sup>TH</sup> 5 PM

For more information, call Chayale @  
706-8019 or email [cmw770@gmail.com](mailto:cmw770@gmail.com)

## Beit Sefer B'yahad/ United Jewish School

1715 East Fulton, Grand Rapids, MI 49503

616-459-5976 • Fax: 616-459-6510

Pam Rush - School Director

pam@templemanuelgr.org

www.unitedjewishschool.org



## *Little Israel Restaurant a major success!!!*



The UJS Israeli restaurant project was once again phenomenal. The food was superb, the community support **OVERWHELMING!**

We served over 150 people. The biggest thank you goes to Marla Tulett for all her energy, experience and great tasting food. Another huge thank you goes to Jan Fonger for spearheading the event and Michele Young for organizing the silent auction. Thank you also to the many volunteers. Without you we could not have been such a success. I hope I haven't forgotten anyone. Julie Gendler, Machel Hammond, Ann Berman, Allyson Strauss, Jodie Blyveis, Carey Potter, Linda Barbour, Wende Cook, Kim Esterman, Patti Green, Barb Duchemin, Doug de lange, Tom Shibley, Alex Rush, Adam Rosema, June Horowitz, Sheryl Siegel, Jason Chambers, Elisabeth Rosewall, Joel Young, the entire Koss family, Morgan Young and Lauren Barbour.

**9th grade** – Immanuel DeJager, Nathan Hurwitz. **10th grade** – Alexandria DeJager, Andrew Hammond, JJ Kaufman, Ben Kogelschatz, Emily Levitt, Carl Powsner, Abbey Rhodes, Kyle Rinzler, Elisa Shibley, Austin Zheutlin. **11th grade** – Sammi Hurwitz, Ilana Parach, Emily Rossio. **12th grade** – Elizabeth Finkelstein, Adam Kogelschatz

**3-20-11** Purim is approaching quickly!! Be ready with your costume for our annual contest!!

UJS is once again selling kosher candy for Passover. More information to come.

UJS collected tzedakah during the 1st semester of school. We were able to plant a Garden of 100 Trees in Israel. What a mitzvah.

Please tune in to WZZM 13 and WOOD TV 8 for UJS closings and check their websites.

### **UJS Contributions:**

In memory of Simon Gindzin  
By Ida Gindzin

Please remember UJS in your contributions. We have a beautiful *Tribute* card that we can send to that special someone.



## PASSOVER CANDY SALE

*Barton's Candy - Kosher for Passover*

Please help support Beit Sefer B'yahad / United Jewish School  
with this great (and tasty) fundraising opportunity!  
UJS receives 40% of all candy sales!!

Please make your selections below and return this form to:  
UJS, 1715 East Fulton SE, Grand Rapids, MI 49503  
Or email pam@templemanuelgr.org with your order

Checks payable to: UJS  
Money and orders are due: March 10  
Order pick-up at UJS: April 17 10am-12:30pm

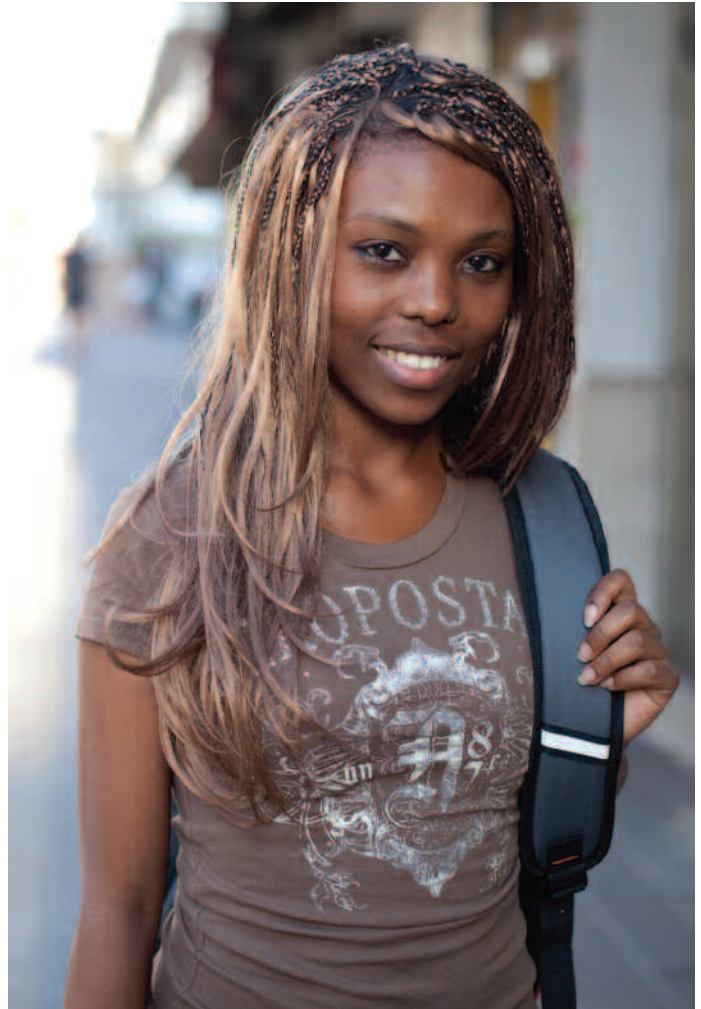
For more info contact Carey Potter - (616) 241-6222 or careypotter@att.net

	Price	Quantity
Chocolate Festival Pops-5 (4-pack \$18.00)	\$ 5.50	_____
Chocolate Covered Macaroons	\$11.50	_____
Chocolate Covered Matzo Crackers	\$13.75	_____
Coconut Macaroons	\$ 8.00	_____
Chocolate Macaroons	\$ 8.00	_____
Chocolate Mint Diamonds	\$ 8.50	_____
Seder Mints	\$10.50	_____
Raspberry Chocolate Jellies	\$11.50	_____
Almond Bark	\$10.50	_____
Fruit Slices	\$14.00	_____
Dark Chocolate Matzo	\$13.75	_____
Chocolate Caramel Daisies	\$10.00	_____
Milk Chocolate Matzo	\$13.75	_____
Almond Caramel Clusters	\$11.00	_____
Lollycones-9 (4-pack \$18.00)	\$ 5.50	_____
Milk and Dark Chocolate Assortment	\$15.50	_____
Almond Butter Crunch	\$14.00	_____
Almond Kisses	\$15.50	_____
Cashew Butter Crunch	\$ 9.00	_____
TOTAL	\$ _____	

Name: \_\_\_\_\_

Phone: \_\_\_\_\_

## Helping herself. Helping Israel.



**BATYA** was four when she made aliyah from Ethiopia. By the time she was ten, she saw the disadvantages Ethiopian Israelis face and wanted to do something about it. She gave dance lessons to children whose parents could not afford extra-curricular activities.

Later, as Batya neared the end of her army service, she felt uncertain about her future. "In disadvantaged areas like my hometown, Hadera," she says, "employment is especially hard to find." At a "Released from Duty" conference organized by a Hadera youth center, she was asked to participate in a Young Leadership course through JDC's Centers for Young Adults. "We learned what it means to be a citizen, and how to take responsibility for your life."

The center is a cultural melting pot where Ethiopians, Russians, other *olim*, and native Israelis can meet. "We all had the same goal," Batya says. "To improve our city and change the sad reality of some families."

Batya, now 23, proudly states, "Today I am a second-year law student. What I am most interested in is constitutional law, where we study the rights of every human being."

To find out more about Batya go to [www.jewishfederations.org/annualcampaign](http://www.jewishfederations.org/annualcampaign)

**JDC's Centers for Young Adults** are located in cities with large immigrant populations. They help young immigrants find their place in Israeli society by providing a wide range of counseling and orientation services under one roof, including guidance regarding higher education and vocational training, job skills and life skills.



**\$650**

Provides academic enrichment and emotional therapy for one Ethiopian-Israeli child for one year.

**\$1,000**

Pays for the academic and support for one immigrant teenager to complete high school matriculation exams.

**\$2,860**

Brings one immigrant into the network of a kibbutz, giving them a unique community and absorption process.

## Jewish Federation of Grand Rapids Endowments

Life cycle times, both happy and sad, are traditional times to make donations to Jewish causes. You can make a donation of \$5 or more to the Jewish Federation of Grand Rapids in honor or in memory of members of our community. We then will acknowledge that donation with a card to that individual or family. This is a wonderful way to send your good wishes and be able to fulfill the mitzvah of tzedakah.

Please be sure to indicate what the occasion is and who is to receive the card. Please specify which of the following funds you would like your donation to be credited to:

- **The Woman of Valor Fund** - (\$10 minimum contribution). To honor the women in our lives who have made a difference personally, locally, or nationally.
- **The Federation General Endowment/L'Dor Vador Fund** - To help ensure the continued work of the Jewish Federation of Grand Rapids for now and the future.
- **The Julian and Judith Joseph Fund** - To provide for local programming and events through the Jewish Federation of Grand Rapids.
- **The David and Susan Samrick Youth Scholarship Fund** - To provide scholarships to Jewish sleep away camps and experiences.
- **The Chuck and Maxine Shapiro Fund** - To help ensure long-term aid to Israel and Jews around the world.
- **The Louis and Louise Weiner Fund** - To help ensure local programming for seniors in the Grand Rapids Jewish Community.
- **The Jerry and Judy Subar Fund** - To help ensure funding for overseas Jewish communities' needs.
- **The Leven Family Fund** - To establish and provide Jewish facilities, and support for cooperative programming among the congregations that support Jewish education for our youth.
- **Sam and Jane Kravitz Social Services Fund** - To support Jewish social services in Grand Rapids.

*Thank you for supporting the  
Grand Rapids Jewish Community*

### The Leven Family Endowment Fund

To Geoffrey & Linda Remes in honor of Annabelle Clary Remes and Noah Elliot Remes

From Sue Remes



THINKING ABOUT THE FUTURE?

PUT IT IN WRITING!

No matter where or when in the future, you can be there to provide for the Jewish community. Your will makes it possible. Leaving a bequest to the Jewish community enables you to create a permanent legacy that can help Jews in need forever. Learn how you can help – for years to come.

The Jewish Federation **Live Generously**  
www.yourcommunity.org

## Jewish Federation of Grand Rapids Endowment Fund Donation Form

**Donation From:** Name \_\_\_\_\_

Address \_\_\_\_\_

City/Zip \_\_\_\_\_

**In Honor Of:** Name \_\_\_\_\_

**In Memory Of:** Name \_\_\_\_\_

**Send Card To:** Name \_\_\_\_\_

Address \_\_\_\_\_

City/Zip \_\_\_\_\_

**Fund** (please pick from list): \_\_\_\_\_

**In Honor Of:** Name \_\_\_\_\_

**In Memory Of:** Name \_\_\_\_\_

**Send Card To:** Name \_\_\_\_\_

Address \_\_\_\_\_

City/Zip \_\_\_\_\_

**Fund** (please pick from list): \_\_\_\_\_

Send your donation to:

**The Jewish Federation of Grand Rapids**  
2727 Michigan NE, Grand Rapids, MI 49506

## The Shofar

Jewish Federation of Grand Rapids  
2727 Michigan NE  
Grand Rapids, MI 49506-1240

CHANGE SERVICE REQUESTED

NON-PROFIT  
U.S. Postage  
**PAID**  
GRAND RAPIDS, MI  
Permit No. 973

Send articles to: 2727 Michigan NE, Grand Rapids, MI 49506-1240

Phone: (616) 942-5553

Fax: (616) 942-5780

E-Mail: [info@JFGR.org](mailto:info@JFGR.org)

[www.jewishgrandrapids.org](http://www.jewishgrandrapids.org)

**Next Issue's Information Deadline: March 15, 2011**



# One Community

**On the second Tuesday of every month,**  
families depend on food donations from the  
**Food Bank at Temple Emanuel.**

Drop off food donations between 10 am - 2 pm  
Monday through Friday at Temple Emanuel

**or mail checks payable to Temple Emanuel  
and specify the donation is for the Food Bank.**

Temple's Address: 1715 E. Fulton, Grand Rapids, MI 49503